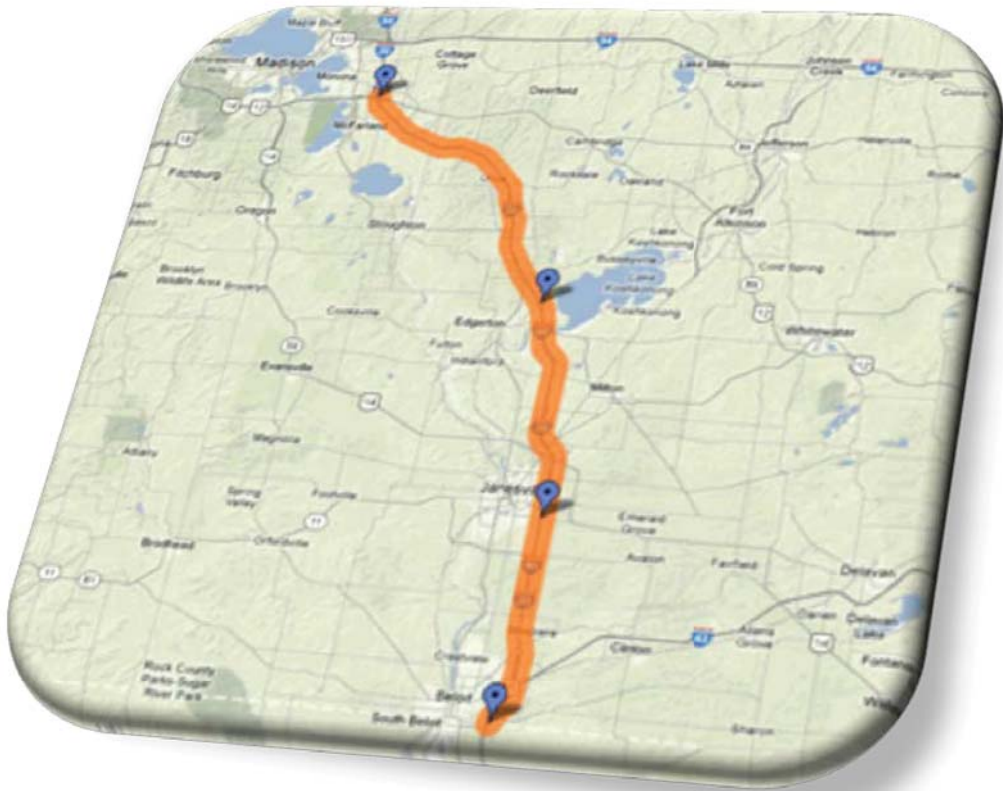


I-39/90 Expansion Project



Public Involvement Meeting
November 18, 2014 5 p.m. to 7 p.m.
Janesville, Wisconsin

I-39/90 Project Corridor



- Illinois State Line to US 12/18
- Approximately 45 Miles
- Major Transportation Corridor
 - People
 - Commerce
 - Tourism

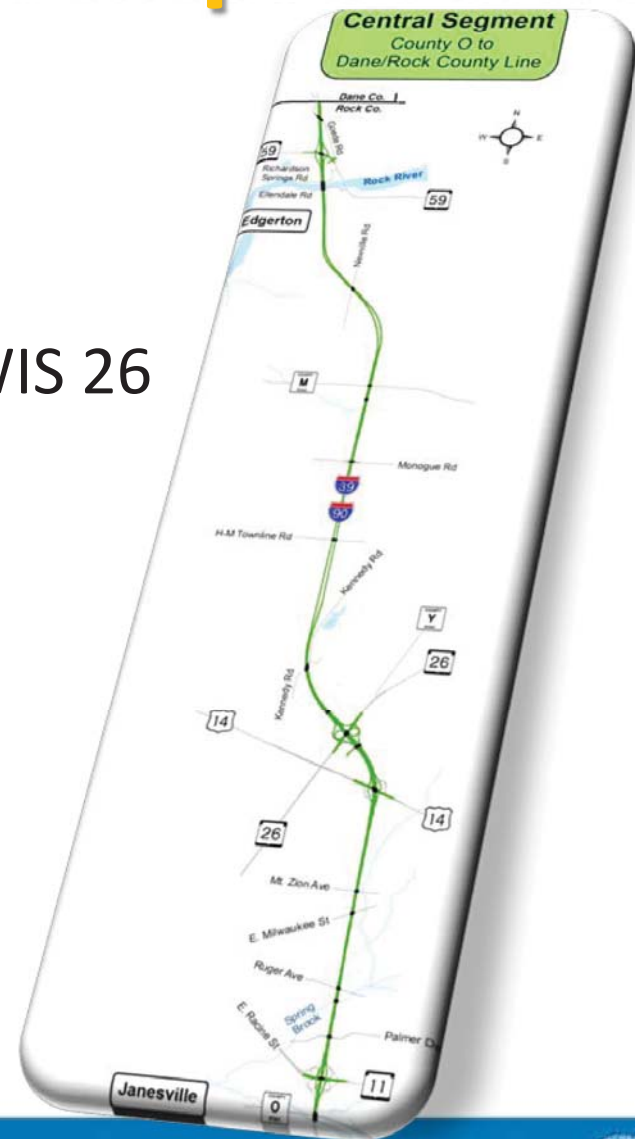
I-39/90 Central Segment

- County O to Dane/Rock County Line



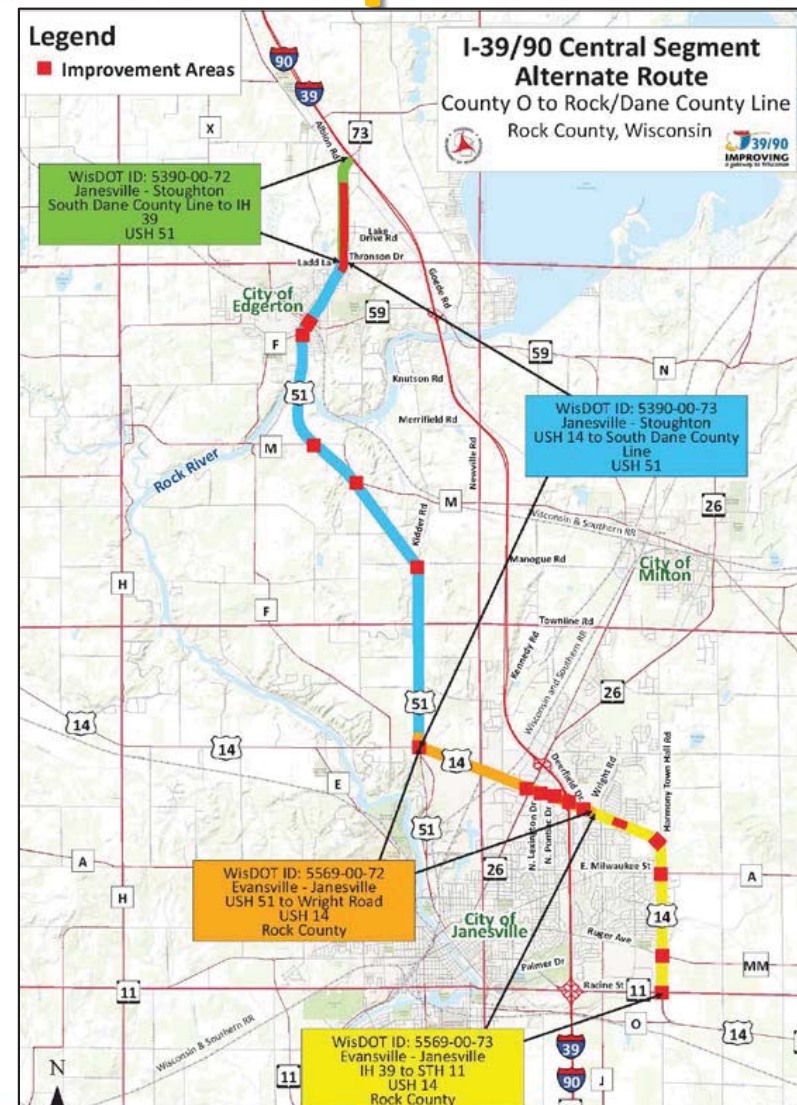
I-39/90 Central Segment Improvements

- 8-lanes County O to WIS 26
- 6-lanes WIS 26 to Dane/Rock Co. Line
- Collector/Distributor Roads at US14/WIS 26
- Bridges Reconstructed
- Bike & Pedestrian Accommodations
- US 14/US 51 Alternate Route
- Noise Barriers
- Park and Ride Lots
- Construction 2013 through 2020

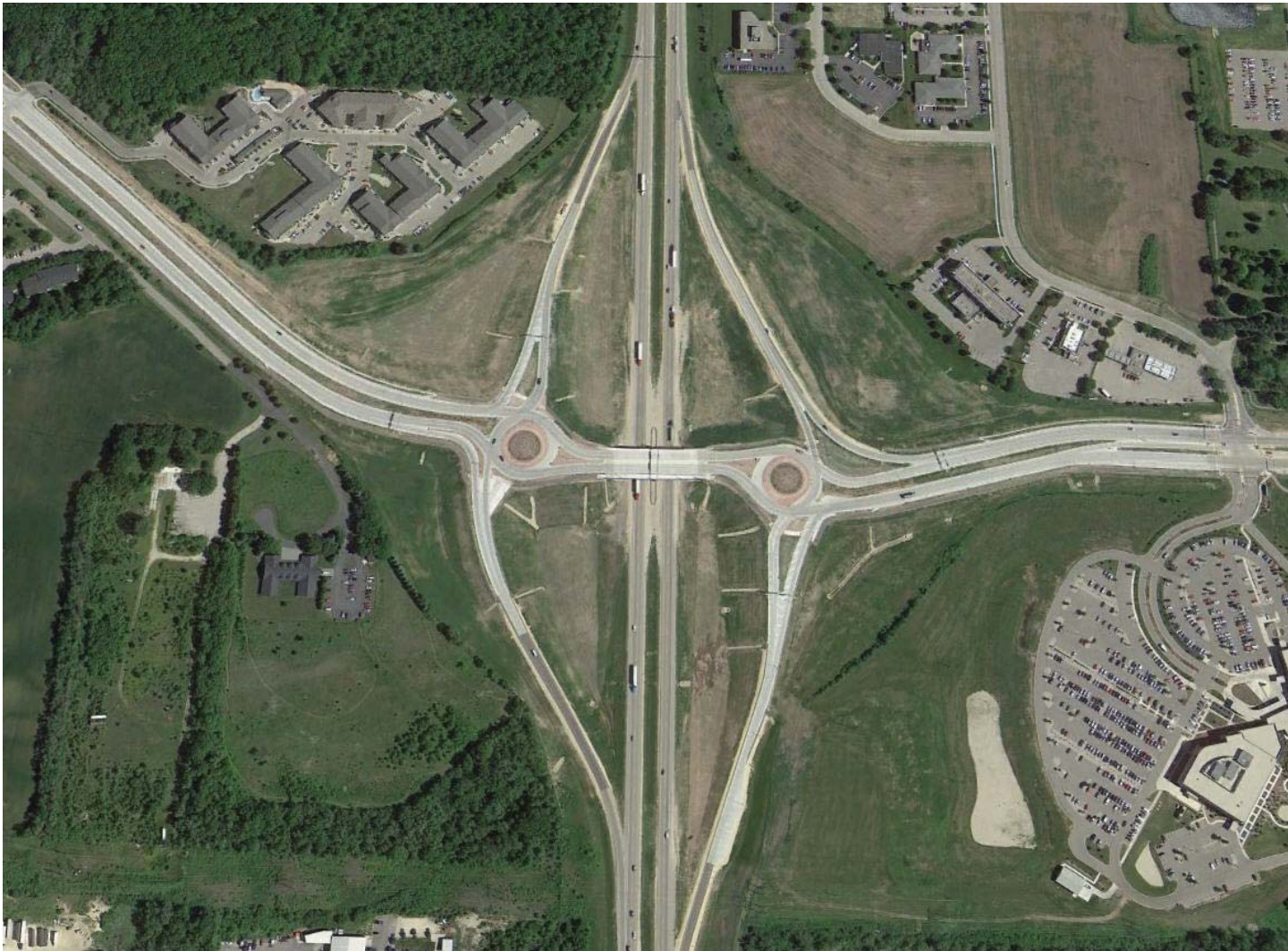


I-39/90 Alternate Route Improvements

- US 14 to US 51 to WIS 73
- Construction year 2015

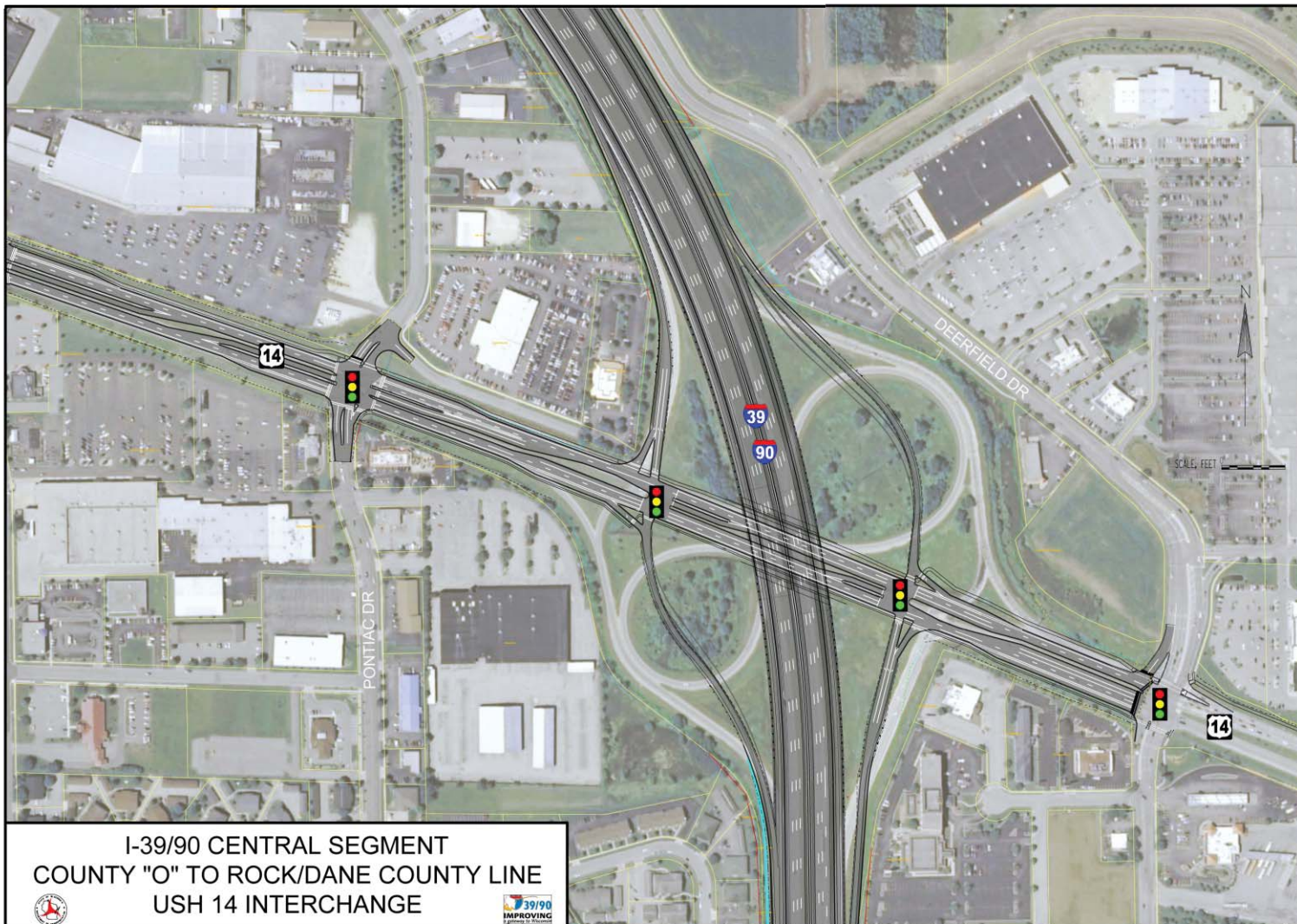


WIS 11 / Racine Street Interchange



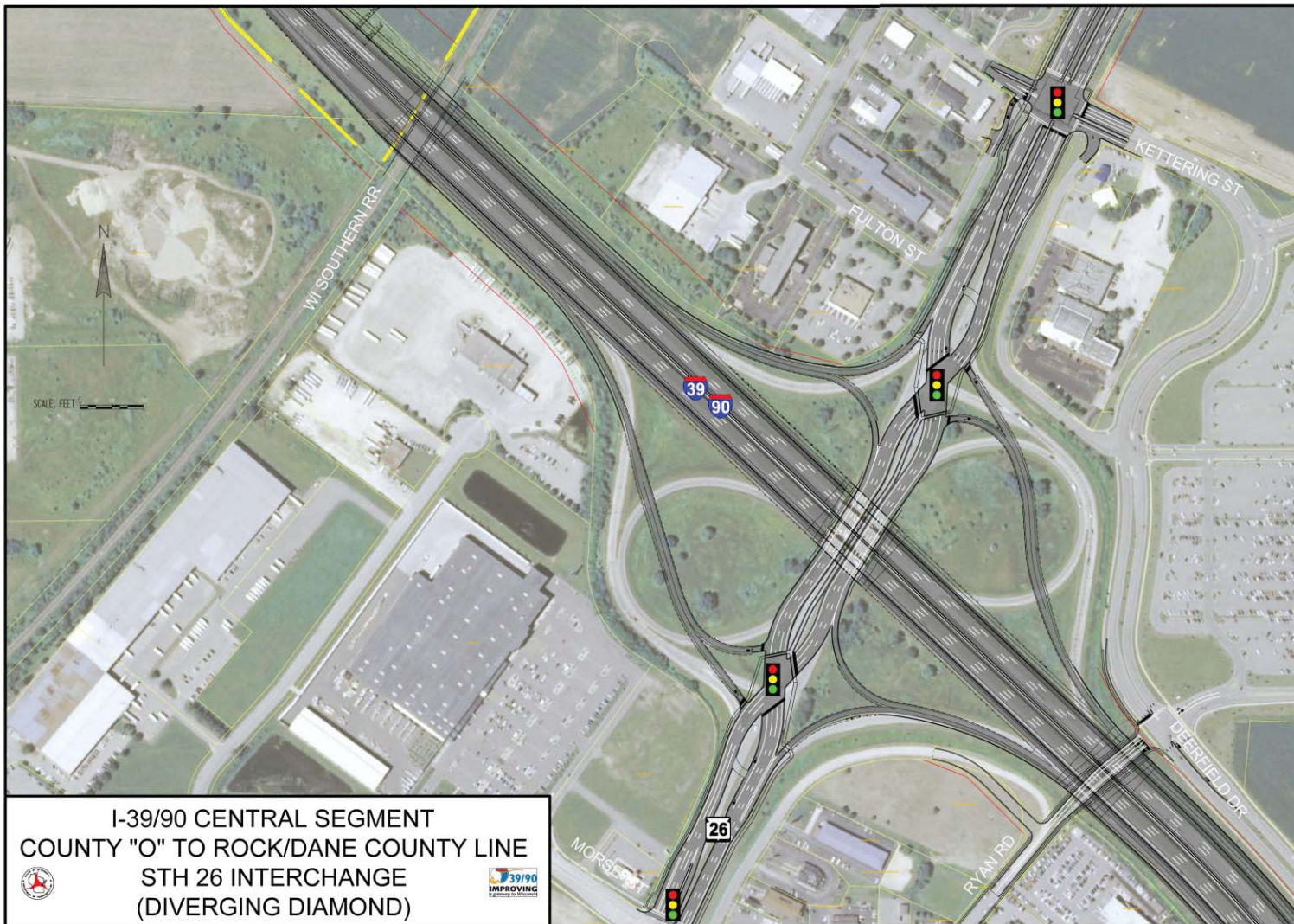
**Reconstructed
into a diamond
interchange
with multi-lane
roundabouts**

US 14 Interchange



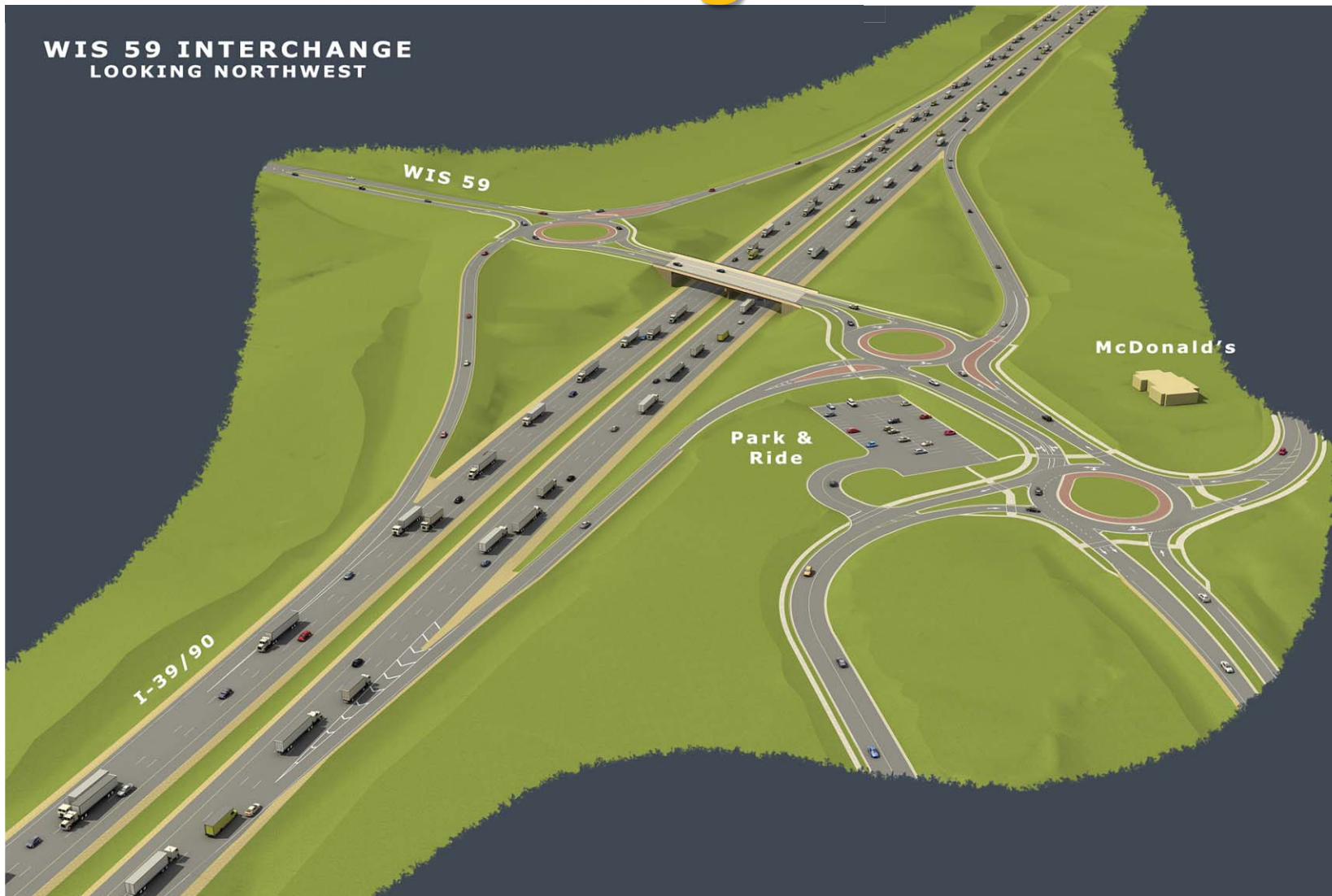
**US 14
Diamond
with
Traffic
Signals**

WIS 26 Interchange



**WIS 26
Diverging
Diamond
(DDI)
with
Traffic
Signals**

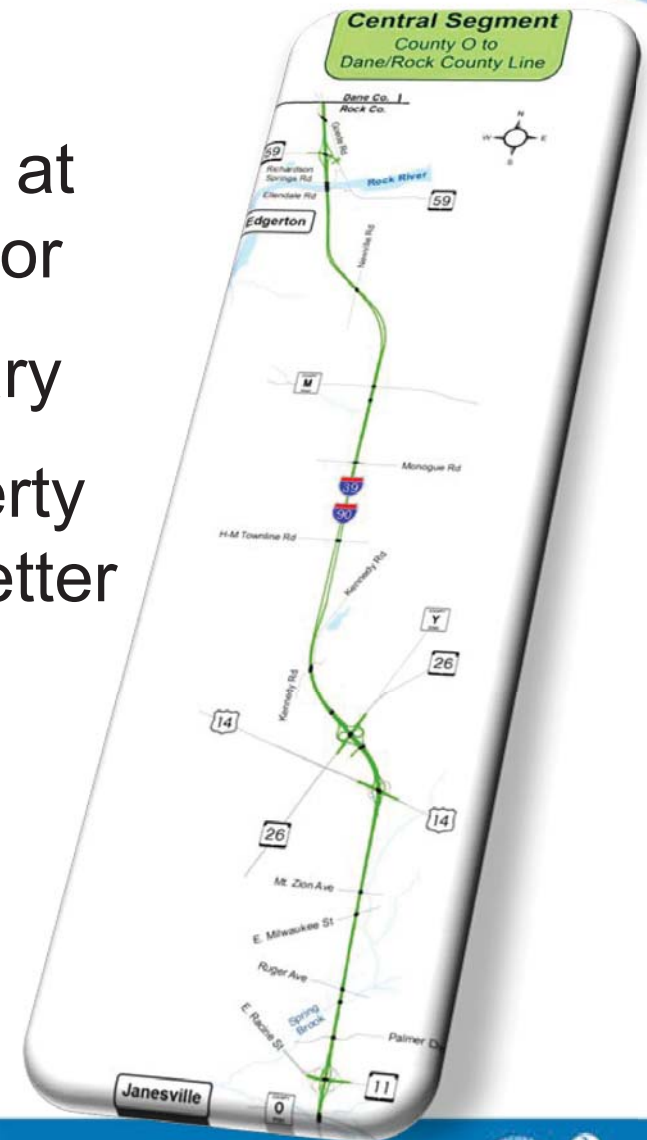
WIS 59 Interchange



**WIS 59
Diamond
with
Round-
abouts**

Right-of-Way

- Additional right-of-way will be required at various locations throughout the corridor
- Amount of right-of-way required will vary
- Project staff will contact affected property owners once right of way needs are better defined



Noise Barrier – Voting Results

- Eligible voters 278
(Ballots sent via certified mail)
- Completed ballots voting “Yes” 220
- Completed ballots voting “No” 8

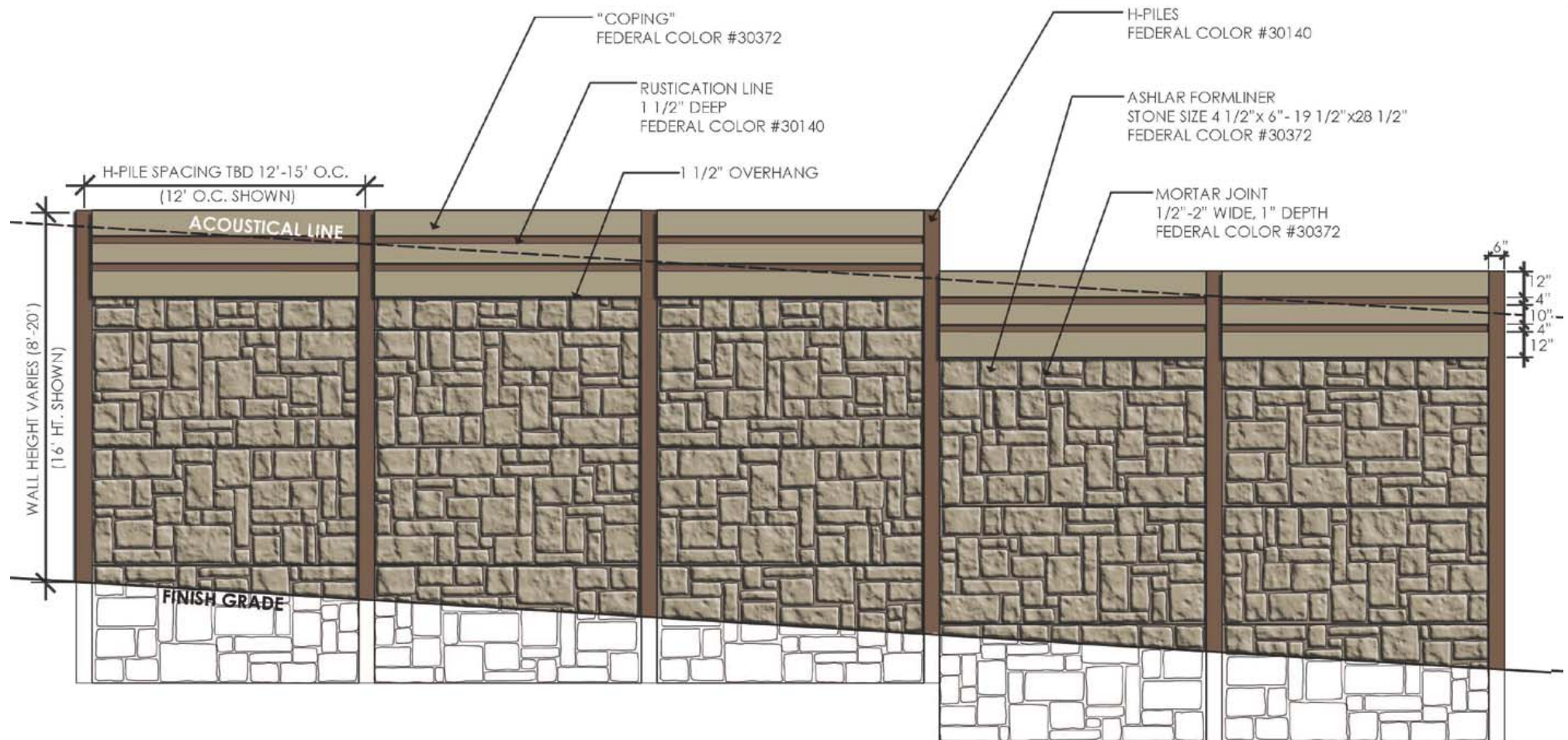
Noise Barrier – Locations



— Noise Wall Locations

Noise Walls are not located on bridges

Noise Barrier – Style and Color



**NOISE WALL CONCEPT 2-1:
 BRICK**

Exhibits for Review

- I-39/90 Mainline
- Interchanges
- Noise Barrier
- Alternate Route Improvements
- WIS 26 Diverging Diamond Interchange (DDI) animation
- WIS 59 Interchange animation
- Construction Staging / Detours
- Various Brochures

Questions?

www.i39-90.wi.gov

i39-90Project@dot.wi.gov

Facebook.com/WisconsinI3990Project

(608) 884-1234