

I-39/90 Expansion Project

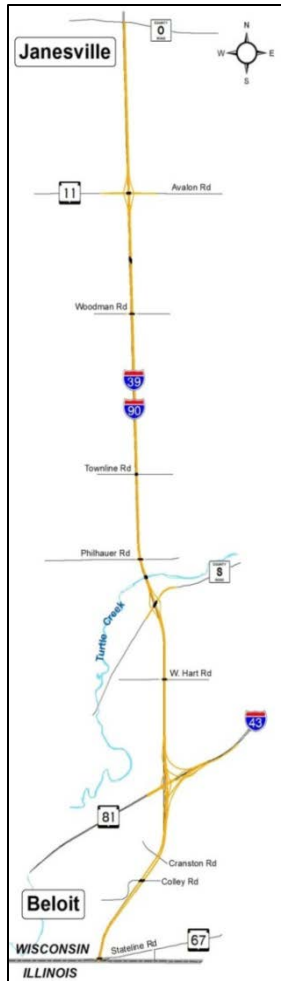


Hart Road Local Stakeholders Meeting
July 16, 2014, 5:00pm
Turtle Town Hall

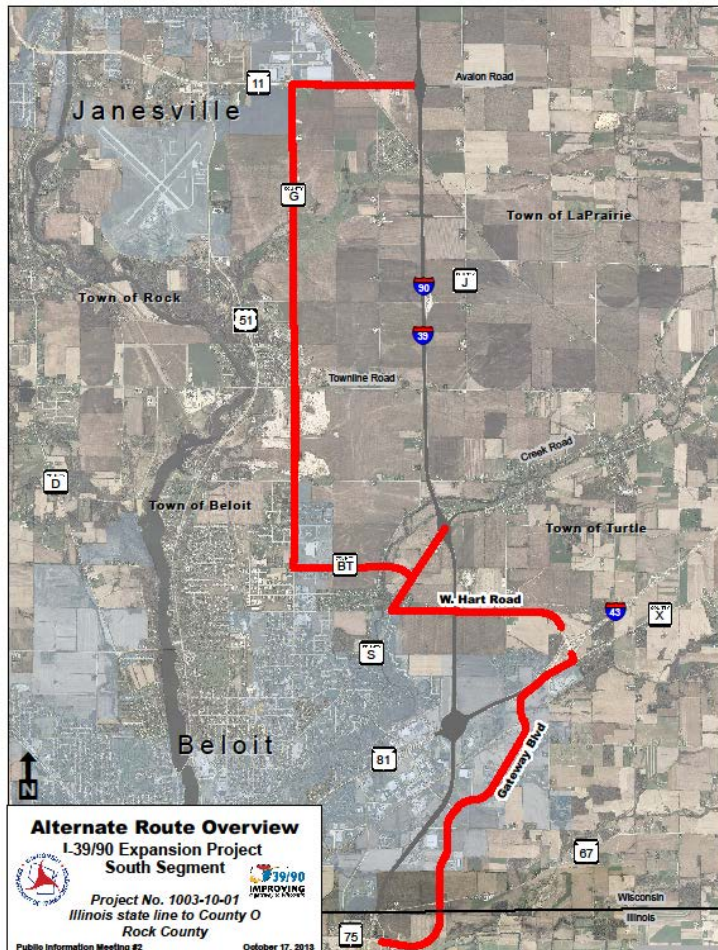
Project Background

Part of I-39/90 South Segment Project

- Extends from Illinois state line to County O
- 12 mile reconstruction and expansion project including:
 - I-43 Interchange
 - County S Interchange
 - WIS 11 (Avalon Road) Interchange
 - Various Bridge Structures
 - Alternate Route Improvements



Project Background



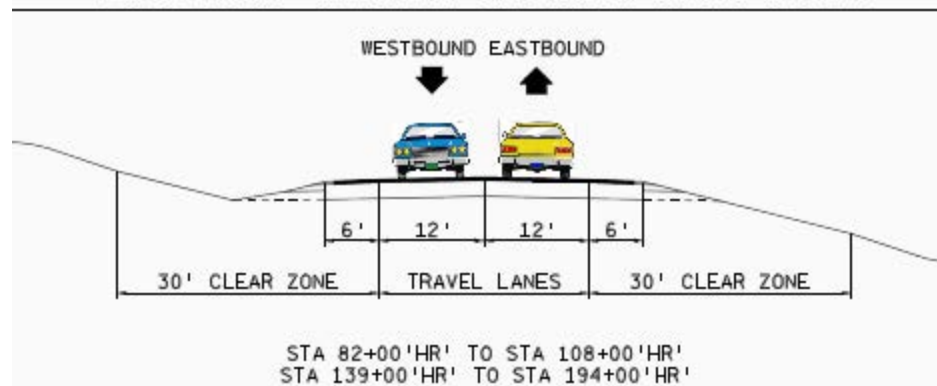
- South Segment Alternate Routes – Gateway Blvd, Hart Road, County S, County BT, County G, WIS 11, and WIS 140
- Alternate Route for Traffic Mitigation and Incident Management
- Marked Route During and After Construction
- Move Traffic between I-39 Interchanges

Project Background

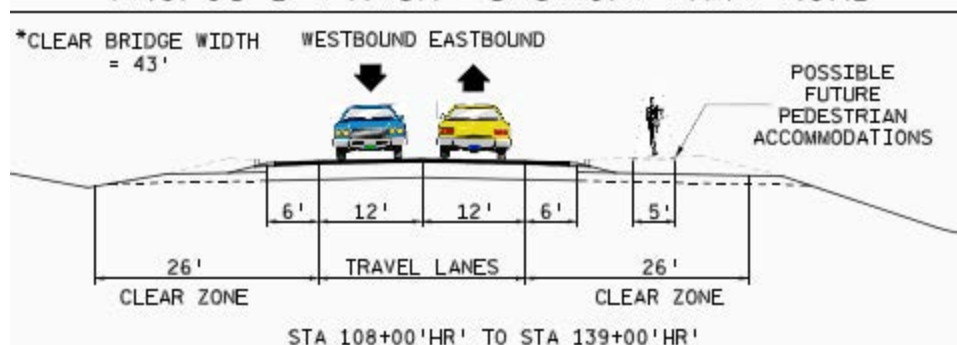
- Hart Road Reconstruction – County S to I-43
 - Road Closed to Thru Traffic During Construction
 - Reconstruct to 12' Lanes & 6' Shoulders
 - 5' Paved Shoulders for Added Safety and Bicycle Use
 - Improve Substandard Vertical Curve over I-39
 - Intersection Improvements for Turn Lanes and Sight Distance
 - Right of Way Required for Improved Roadside Safety and Drainage

Hart Road Typical Section

PROPOSED TYPICAL SECTION: HART ROAD



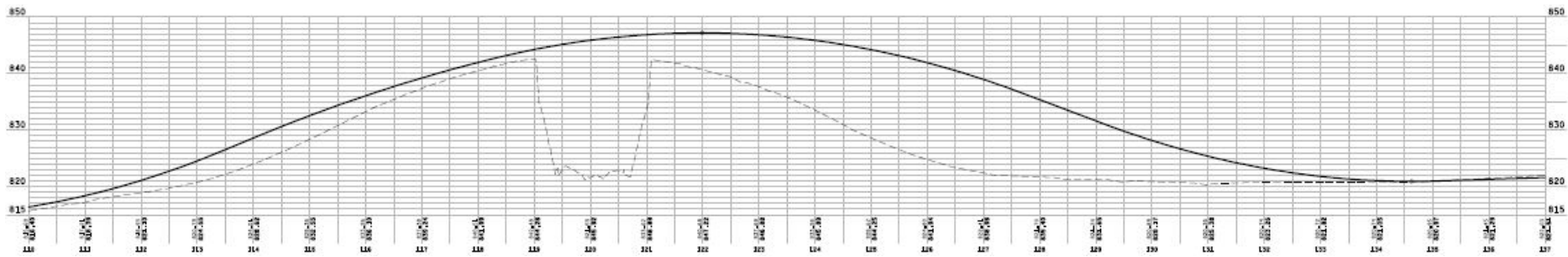
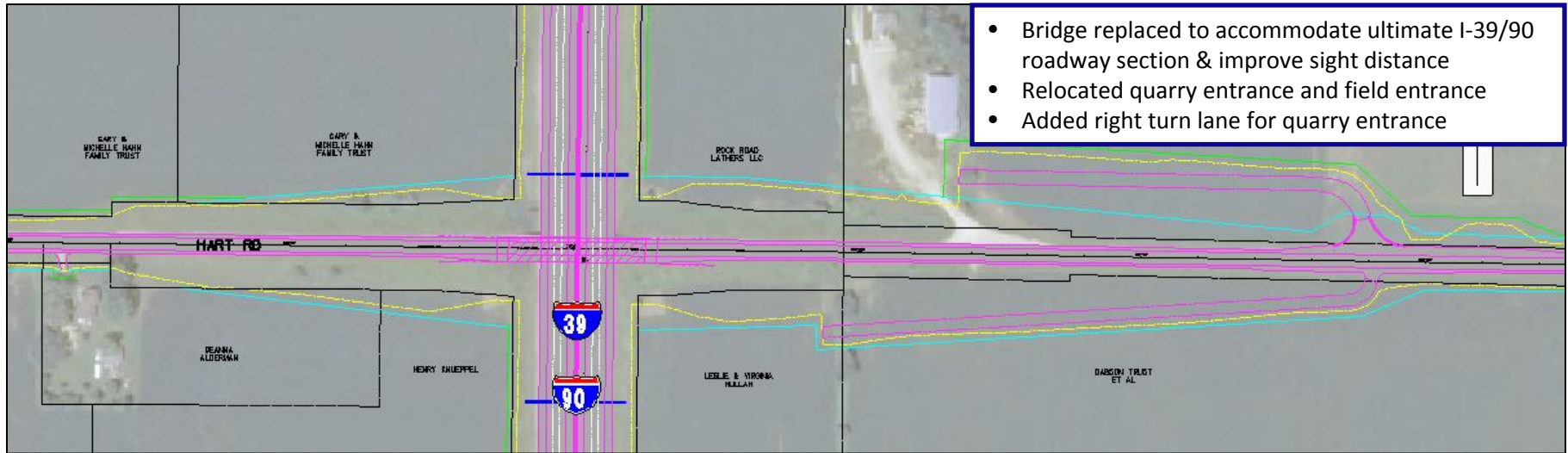
PROPOSED TYPICAL SECTION: HART ROAD



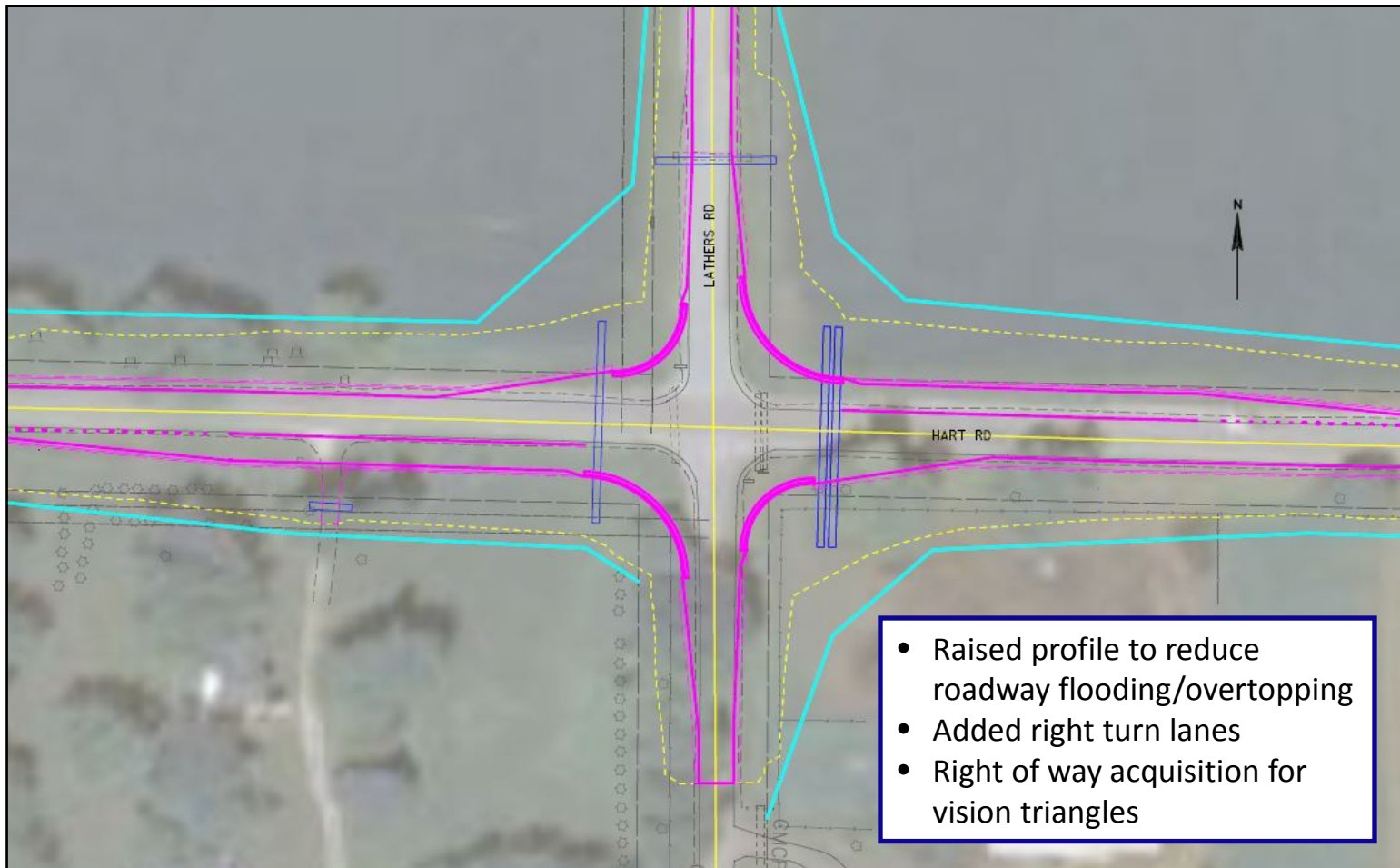
County S Intersection Details



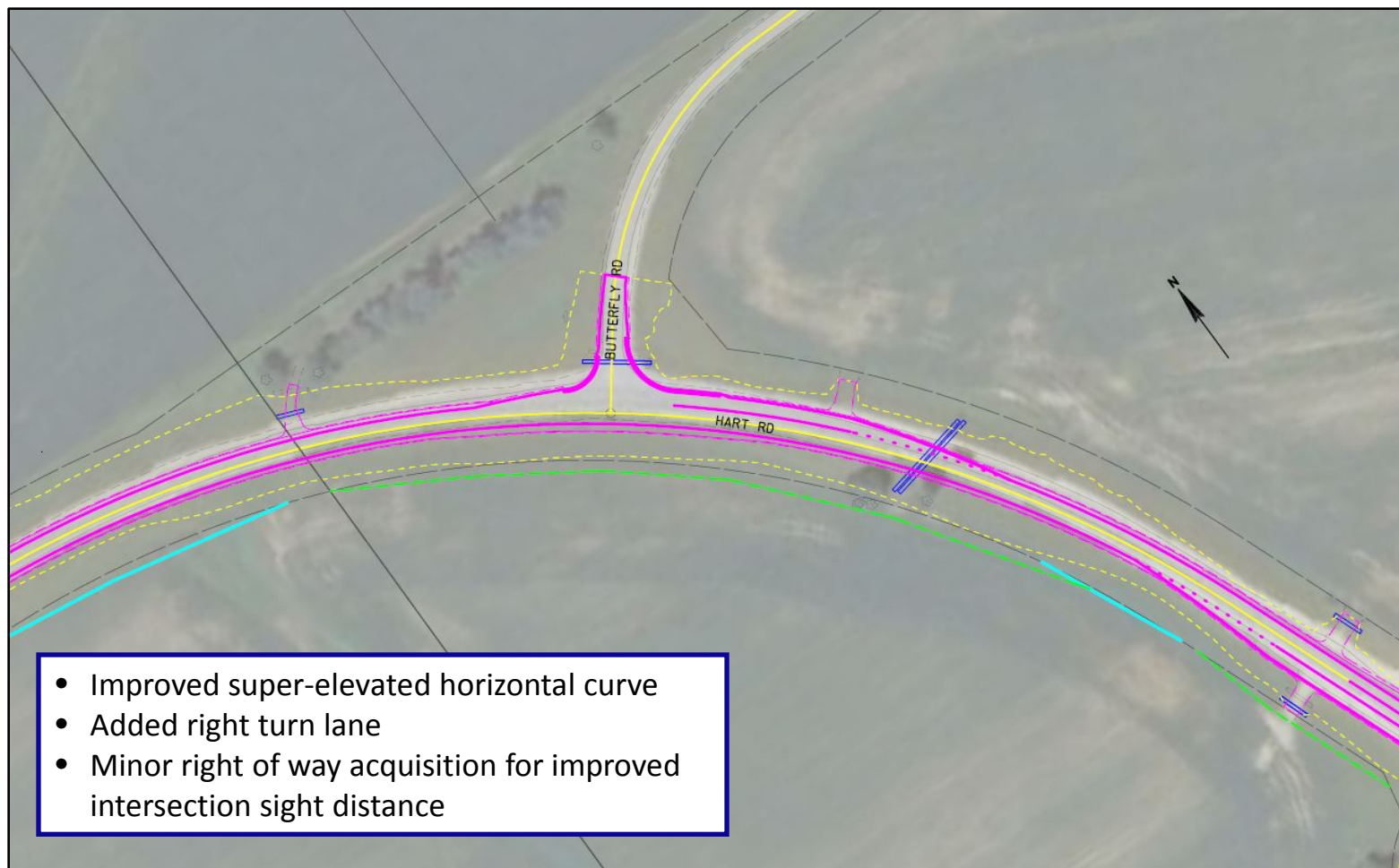
I-39/90 Overpass



Lathers Road Intersection Details



Butterfly Road Intersection Details



Hart Road Schedule

- Current Stage and Future Schedule
 - Recently completed 60% design
 - Draft Right of Way Plat completed
 - Meet with local stakeholders to gain feedback (today)
 - Real estate acquisition late 2014 through Summer 2015
 - Final design completion in August 2015
 - Project construction in 2016, dependent upon available funding

Your Input is Valuable



Questions?

www.i39-90.wi.gov

i39-90Project@dot.wi.gov

Facebook.com/WisconsinI3990Project

(608) 884-1234

I-39/90 Expansion Project



Hart Road Local Stakeholders Meeting
July 16, 2014, 5:00pm
Turtle Town Hall