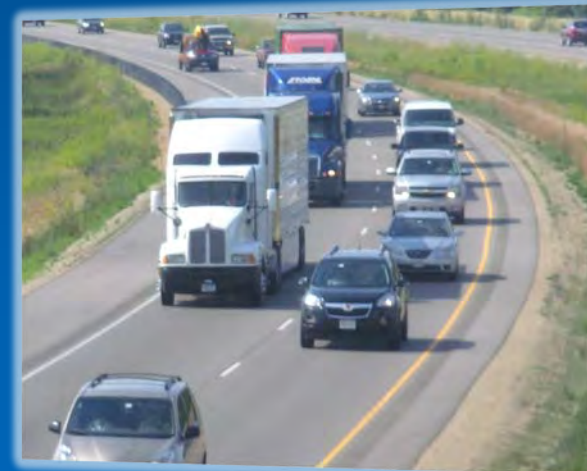
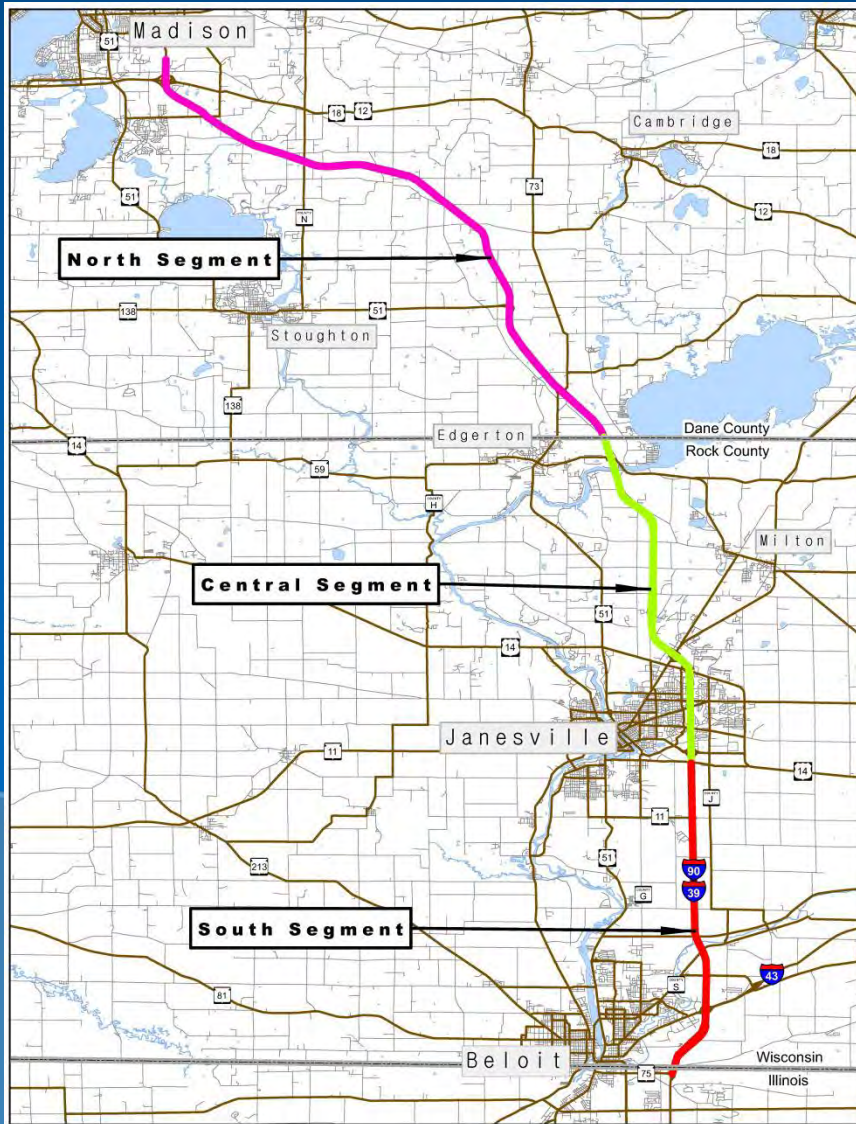


# I-39/90 Project



South Segment Public Information  
Meeting for I-43 Interchange  
December 10, 2013, 5:00 p.m.  
Rotary River Center, Beloit

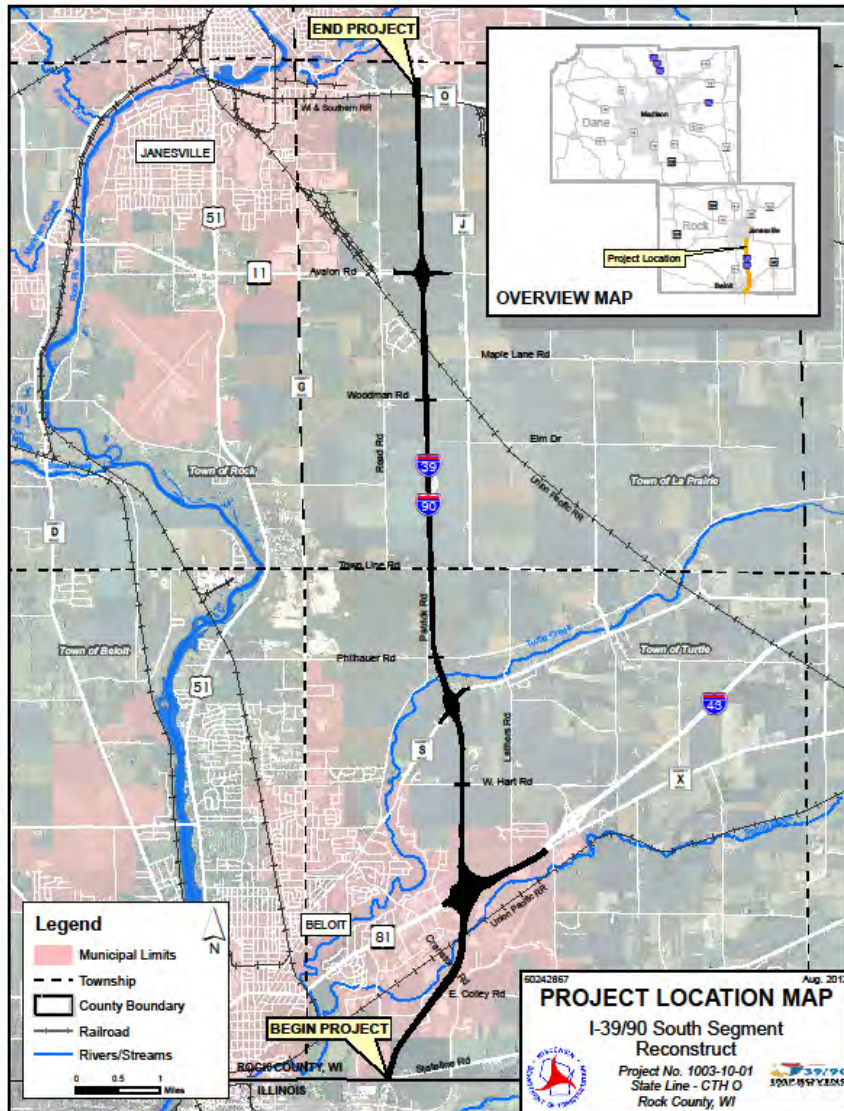
# I-39/90 Project Overview



- North Segment
  - Dane/Rock County Line to County AB (Buckeye Road)
- Central Segment
  - County O to Dane/Rock County Line
- South Segment
  - WI/IL Stateline to County O



# South Segment Overview



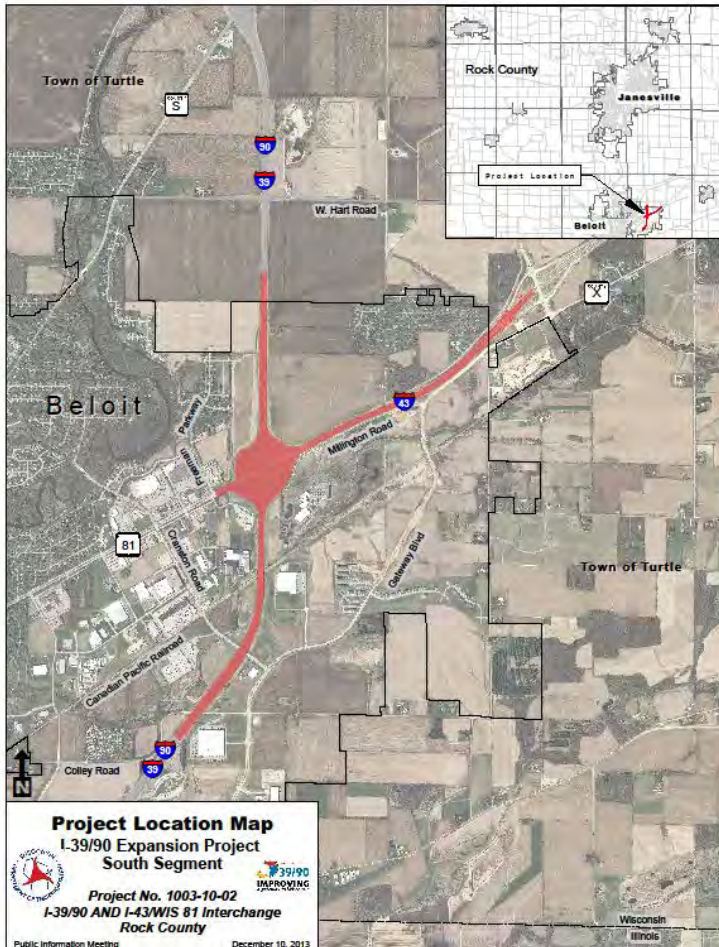
## Overview

- 12 mile reconstruction and expansion of I-39
- Reconstruction of 3 interchanges
- Right of way acquisition required
- South Segment PIM held October 17

## Focus today is I-43 interchange

- New EA Document
- Purpose & Need
- Interchange Criteria
- 5 Preliminary Alternatives
- Traffic Volumes
- 3 Renderings of Driver Views
- Alternative Comparison Matrix

Goal = Public Input on Alternatives





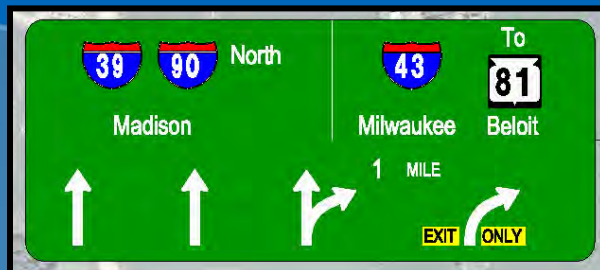
- **Re-Evaluation of original EA for 3<sup>rd</sup> lane expansion**
  - *Design changes for safety and operations*
  - *Identify, analyze and address changes since the October 2010 document was approved*
  - *Determine if the overall conclusions are still valid*
- **New EA for I-43 Interchange**
  - *The interchange has independent utility and can be removed from the overall corridor expansion*
  - *The scope of work has had some changes*
  - *A preferred alternative has not yet been identified*
  - *Looking for public comment by January 2014*

- Purpose
  - ✓ Meet Current Design Standards
  - ✓ Improve Overall Safety
  - ✓ Accommodate Future Traffic
  - ✓ Replace Aging Pavements/Structures
- Need
  - ✓ Route Importance/System Linkage
  - ✓ Interchange Deficiencies
  - ✓ Crash History
- All viable alternatives must meet Purpose and Need



## Design Criteria

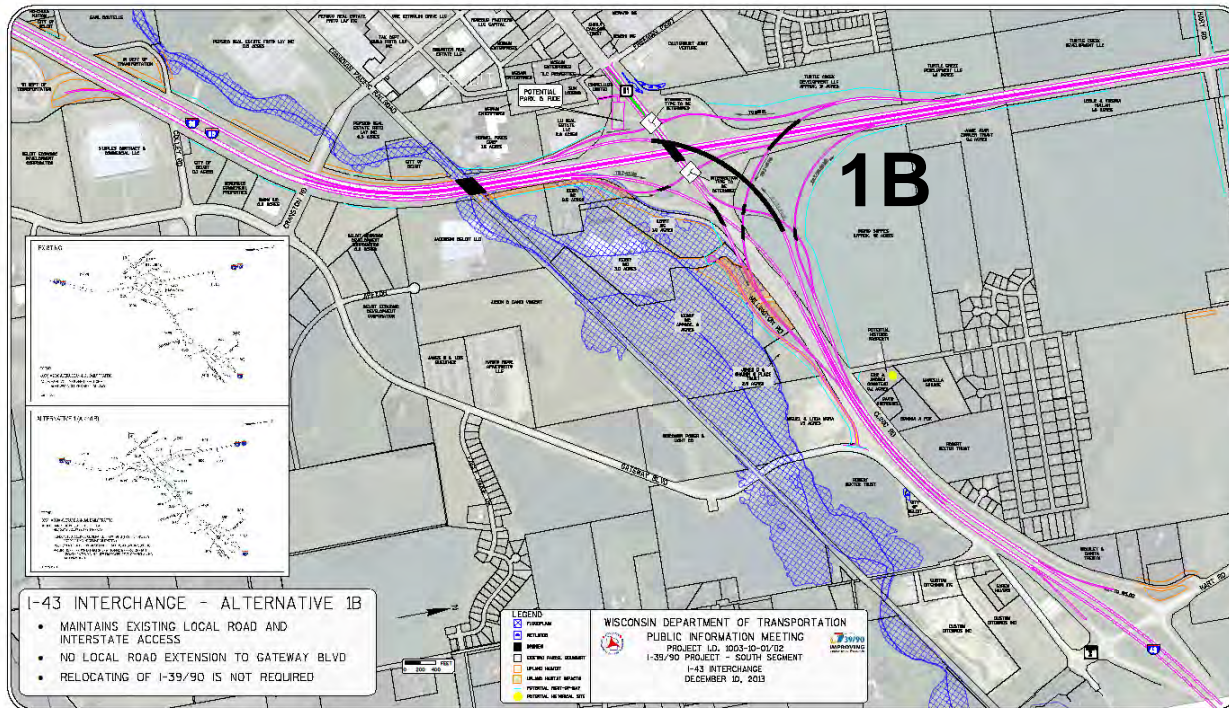
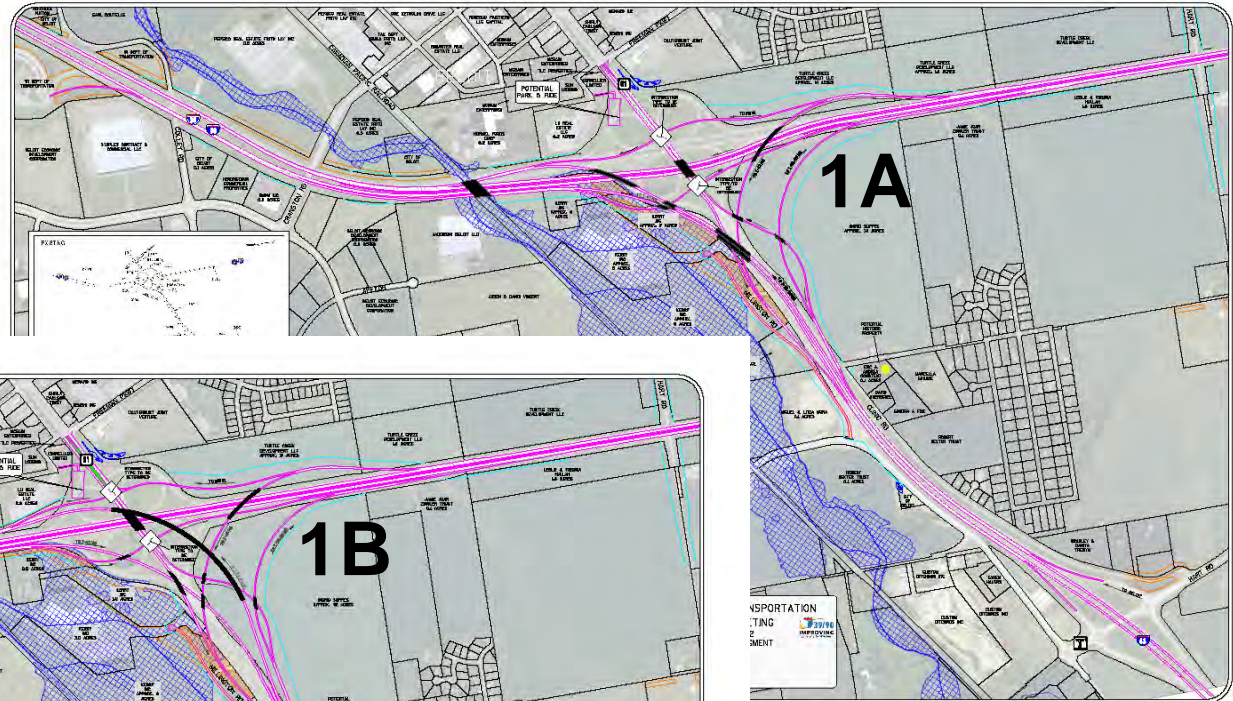
- ✓ Free Flow Interstate to Interstate Connections
- ✓ Right Side Interstate Exits & Entrances
- ✓ Single Exit & Entrance Points from I-39 to I-43/Local Ramps
- ✓ Evaluation of Local Connection to Gateway Boulevard





## Maintains Existing Access Location

## No Local Road Extension

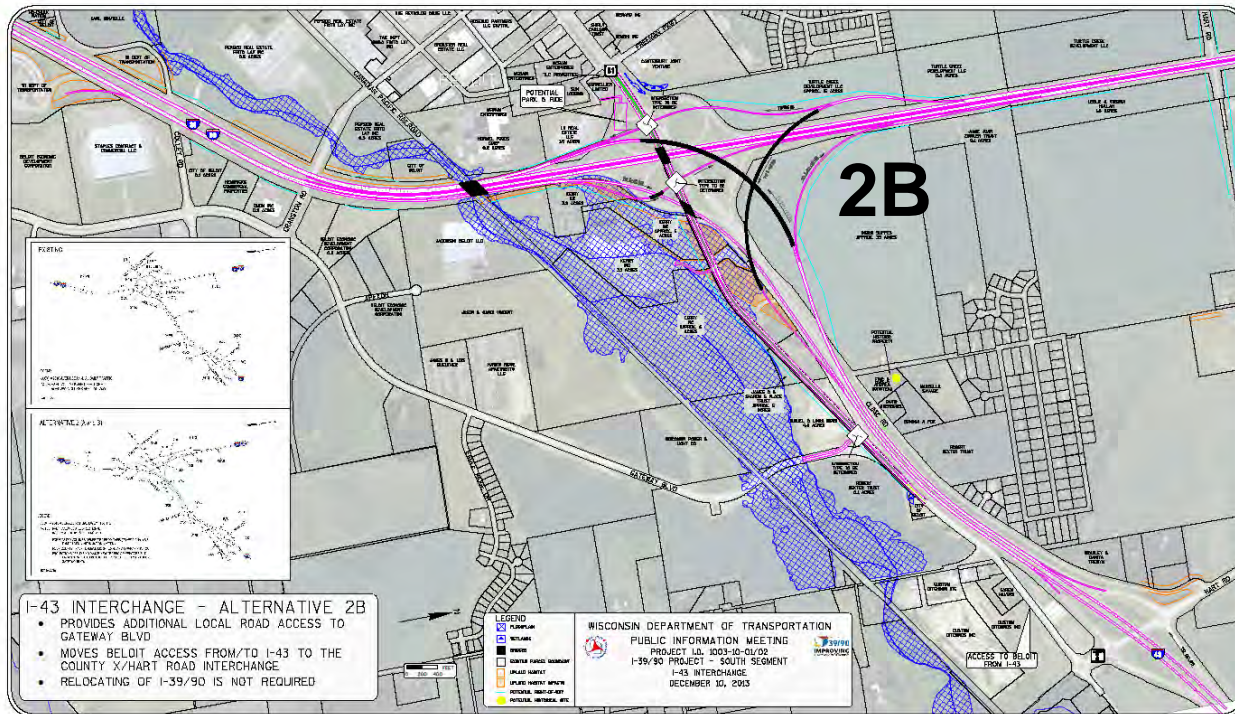
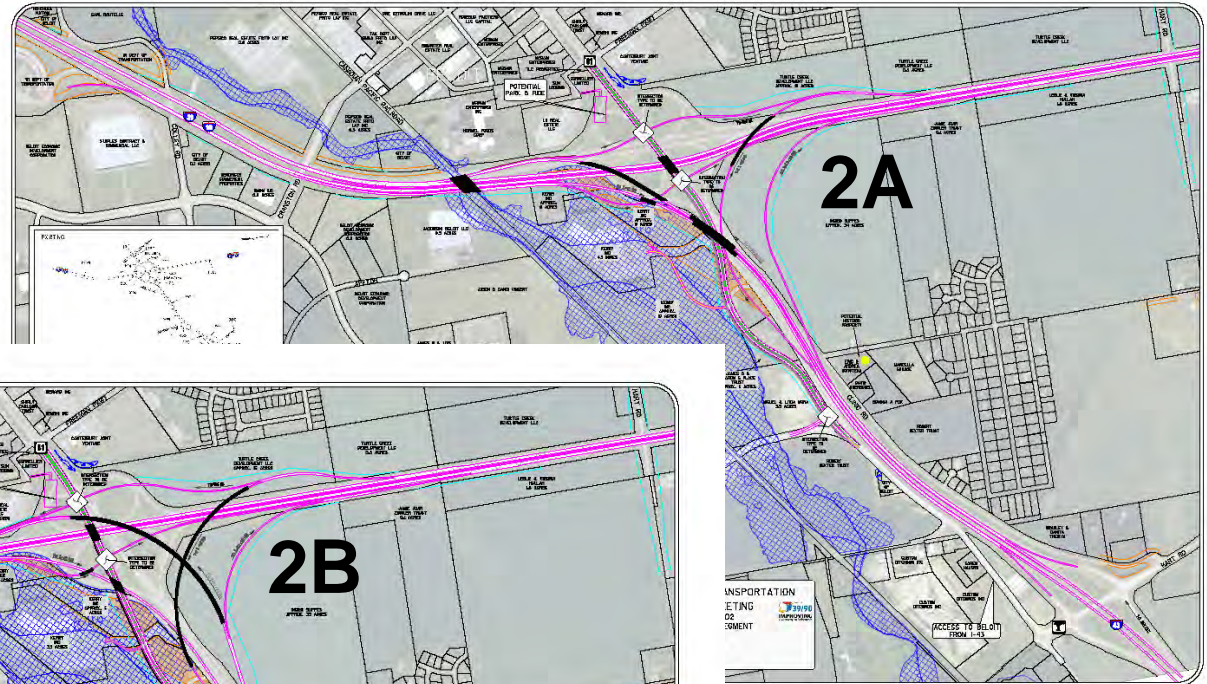




# I-43 Alternatives

**Provides Local Road Access to Gateway Blvd**

**I-43 Beloit Access to County X / Hart Road Interchange**

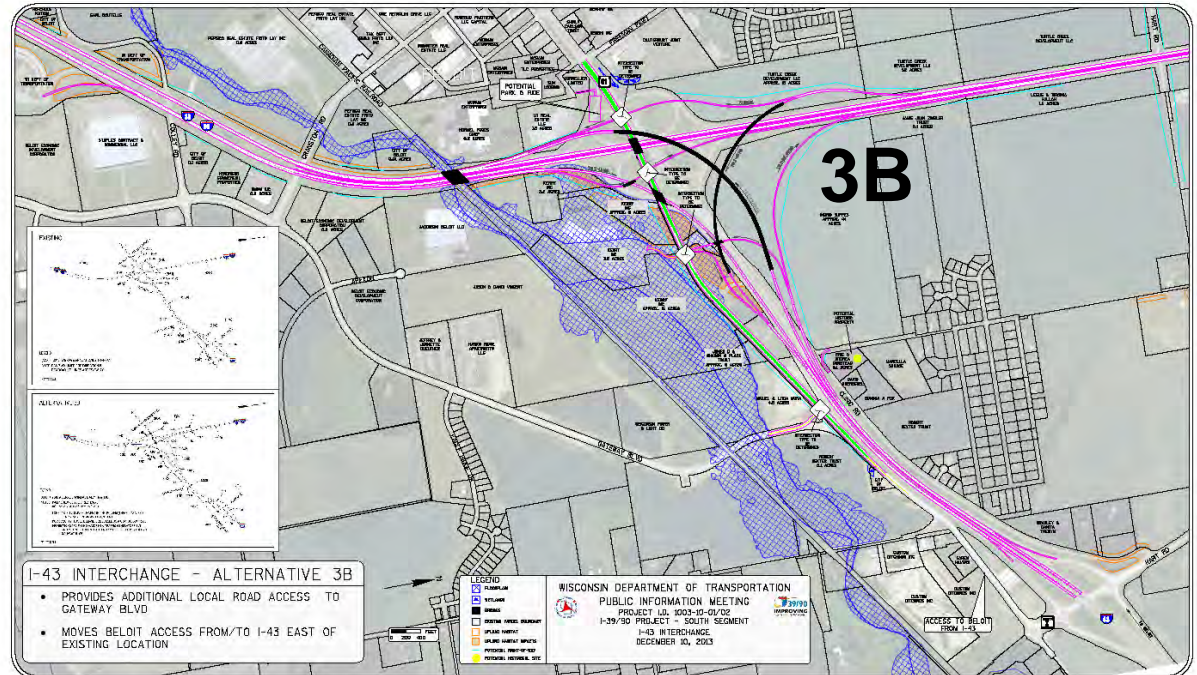




# I-43 Alternatives

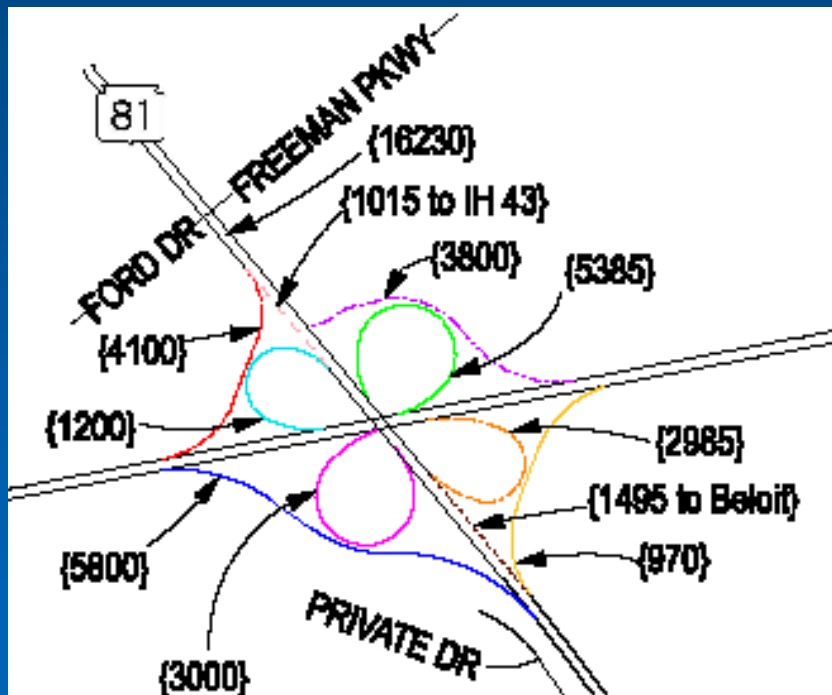
Provides Local Road  
Access to Gateway Blvd

I-43 Beloit Access East  
of I-39/90





# Traffic Volumes

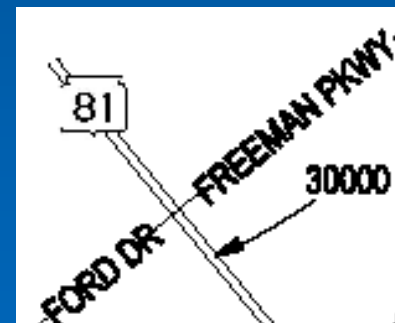


- Existing I-43 to Beloit  
= 1,495 AADT (18%)
- Existing I-39 to Beloit  
= 6,785 AADT (82%)

**Alt 1A & 1B**



**Alt 2A & 2B**



**Alt 3B**



I-39 LOOKING NORTH TOWARDS INTERCHANGE - ALL "A" ALTERNATIVES



I-39 LOOKING NORTH TOWARDS INTERCHANGE - ALL "B" ALTERNATIVES



## 3 Driver Views

- Looking North from I-39
- Looking South from I-39
- Looking East from WIS 81

## Comparison of “A” Alternatives to “B” Alternatives



# Comparison of Alternatives

Comparison Factor	No Build	1A	1B	2A	2B	3B
Project Length (Lane Miles)	14	34	34	35	35	36
Construction Cost: Structures (\$Mil)	0	29	39	30	48	53
Construction Cost: Non-Structures (\$Mil)	19	59	65	62	65	66
Real Estate Cost (\$Mil)	1	5	4	4	4	5
Total Cost (\$Mil)	20	93	108	96	117	124
Total New Right of Way Area (Acres)	3	90	83	88	85	105
Farms Affected	3	7	7	7	7	7
Buildings Required	0	1	1	1	1	1
Floodplain Encroachment	No	Yes	Yes	Yes	Yes	Yes
Stream Crossings	1	1	1	1	1	1
Endangered Species Affected	0	0	0	0	0	0
Potential Historic Properties	0	1	1	1	1	1

# Your Input is Valuable





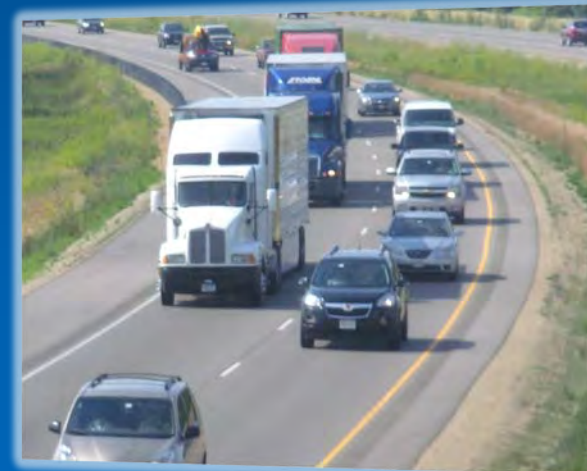
Project website  
[www.i39-90.wi.gov](http://www.i39-90.wi.gov)

Project Facebook  
[www.facebook.com/WisconsinI3990Project](http://www.facebook.com/WisconsinI3990Project)

# Questions?



# I-39/90 Project



South Segment Public Information  
Meeting for I-43 Interchange  
December 10, 2013, 5:00 p.m.  
Rotary River Center, Beloit