



County G and County BT Public Information Meeting

July 31, 2013, 5:00 p.m.

Blackhawk Technical College

Project Background

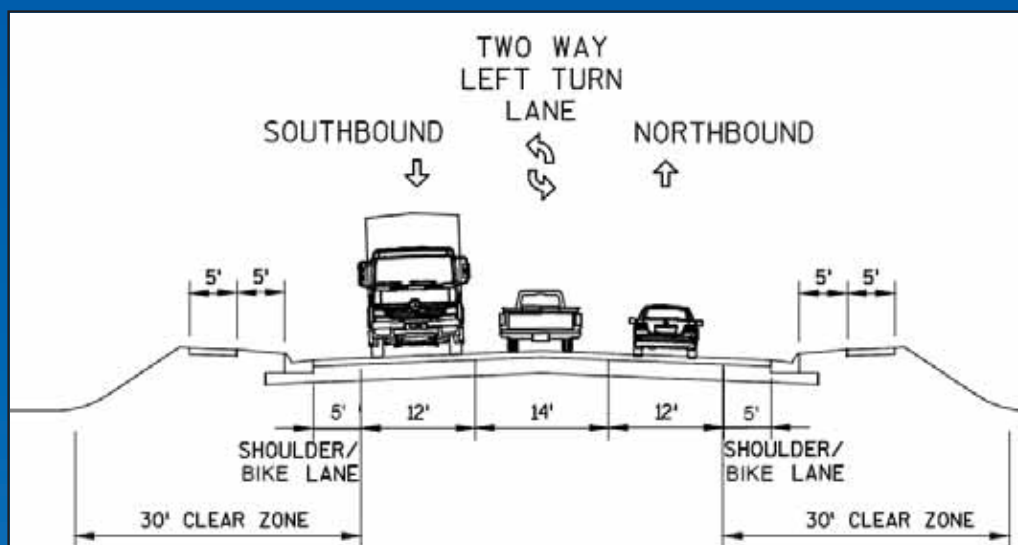
- County G Reconstruction Project
 - Safety improvements
 - Townline Road and WIS 11 intersections
 - Additional turn lanes
 - Improved shoulders
 - Pavement upgrades to better accommodate trucks
- County BT Construction Project
 - New rural roadway and bridge over Turtle Creek
- Planned Alternate Route for I-39/90
 - Incident management
 - Congestion management



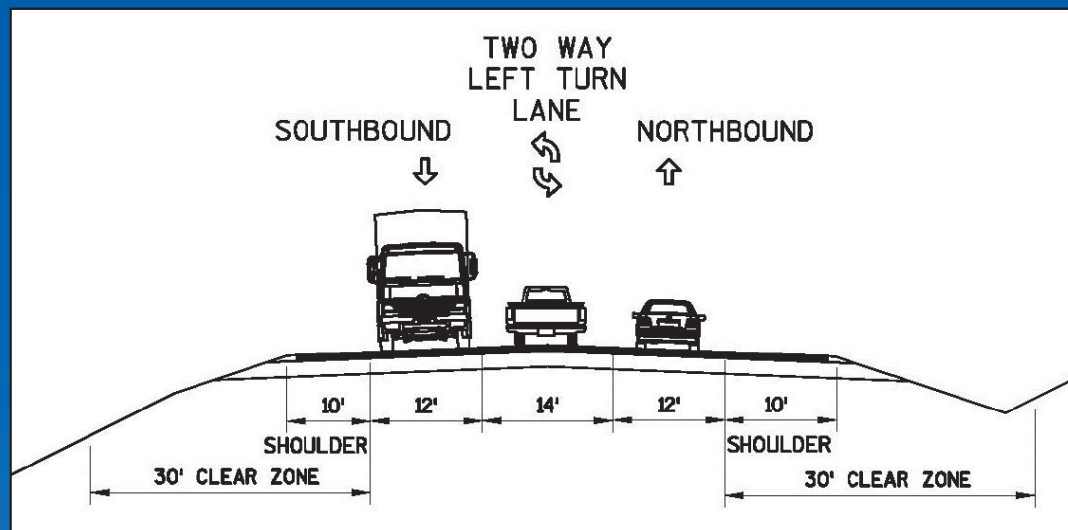
- Project Overview
 - Project limits and proposed detour route
- County G
 - Huebbe Parkway to Philhower Road
 - Philhower Road to Sunny Lane
 - Sunny Lane to WIS 11
 - Townline Road intersection
 - WIS 11 intersection
 - County G traffic staging overviews
- County BT
 - County G to County S
 - Traffic volumes



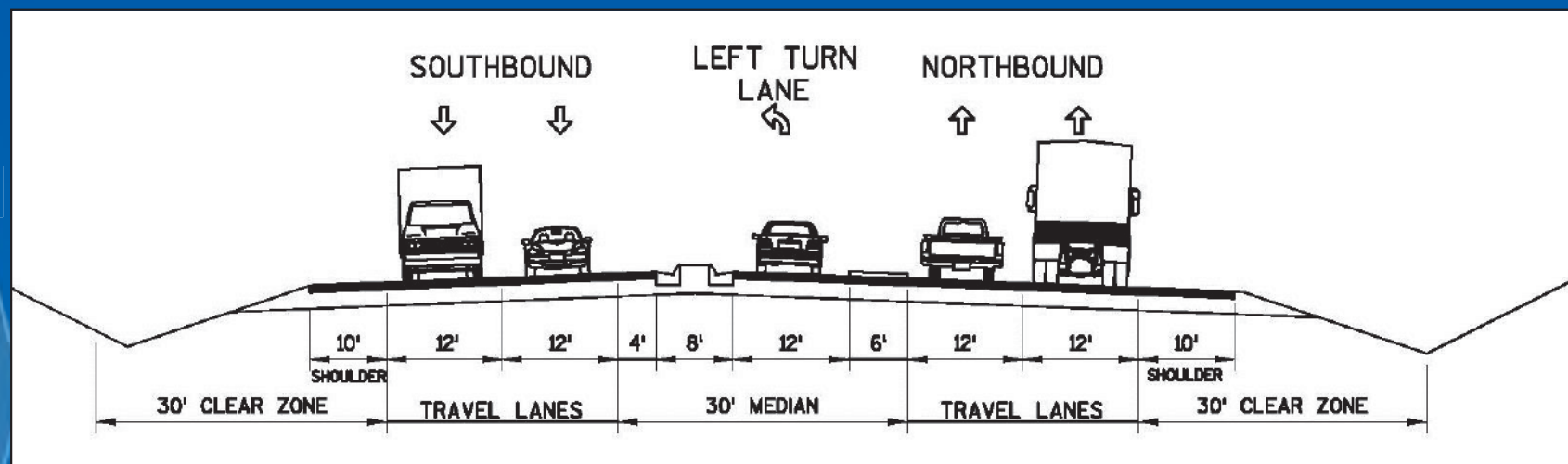
- Huebbe Parkway to Philhower Road
 - Minor horizontal alignment and vertical profile changes
 - Dedicated right turn lanes at some intersections
 - Bicycle and pedestrian accommodations
 - Curb sections to minimize real estate impacts
 - Strip right of way acquisition and temporary construction easements



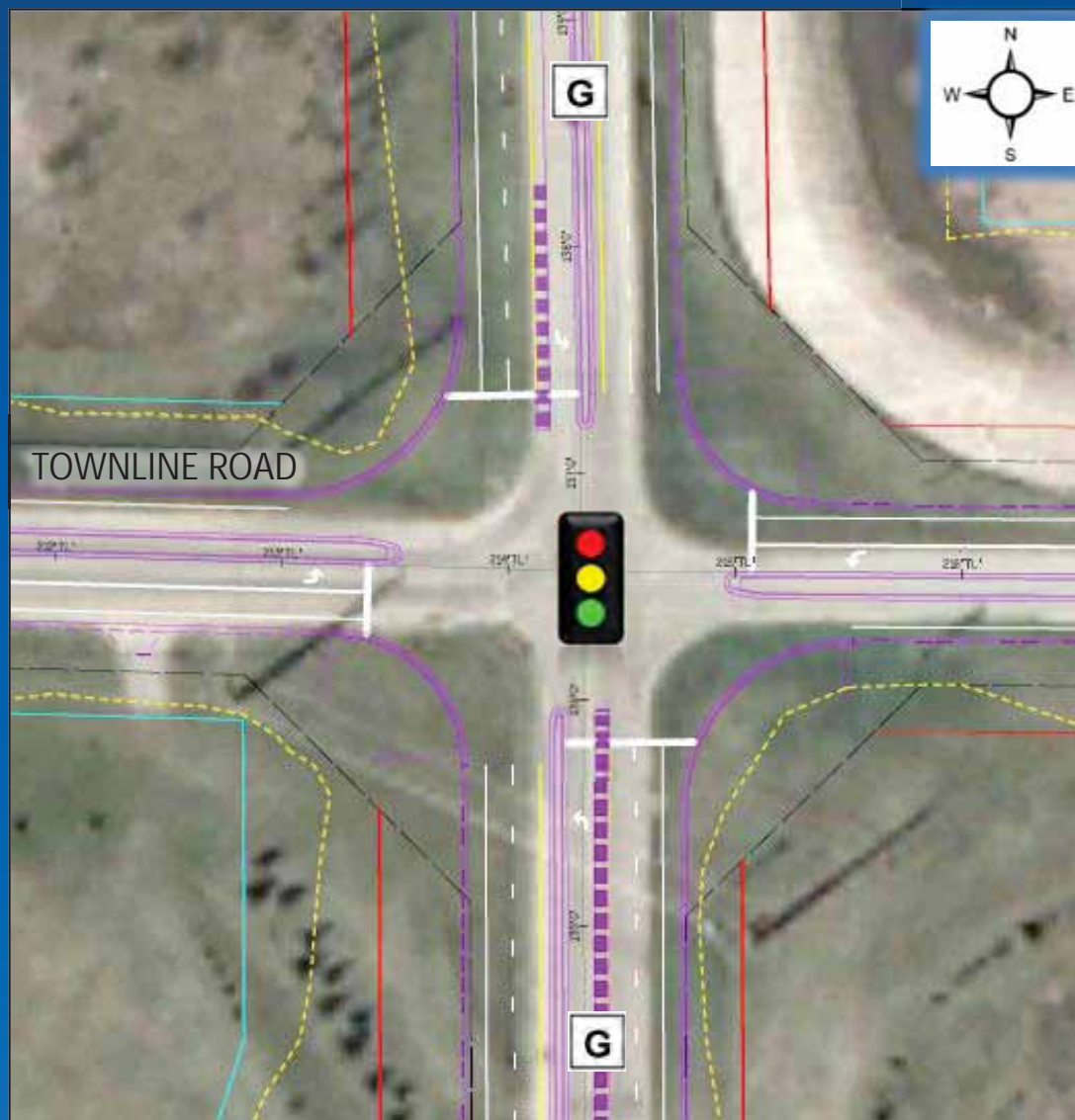
- Philhower Road to Sunny Lane
 - Horizontal alignment and vertical profile changes
 - Dedicated right turn lanes at intersections and some driveways
 - Paved shoulders for added safety and bicycle accommodations
 - Strip right of way acquisition and temporary construction easements



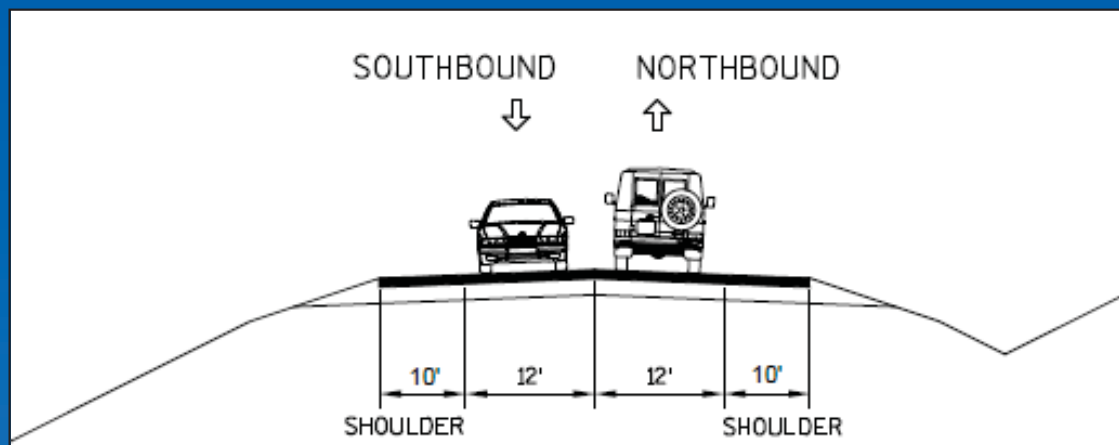
- Townline Road Intersection
 - Roundabout and traffic signal considered
 - Traffic signal option selected
 - Additional thru lanes on County G, dedicated left turn lanes all 4 legs
 - Oversize/overweight (OSOW) truck considerations
 - Bicycle accommodations



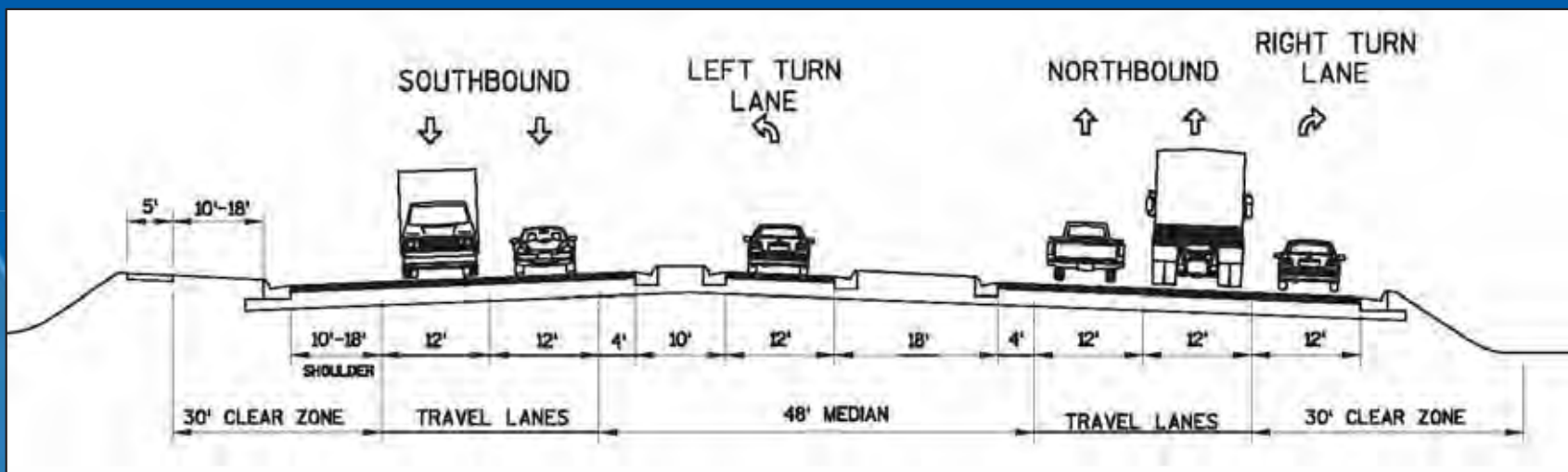
Townline Road Intersection Detail



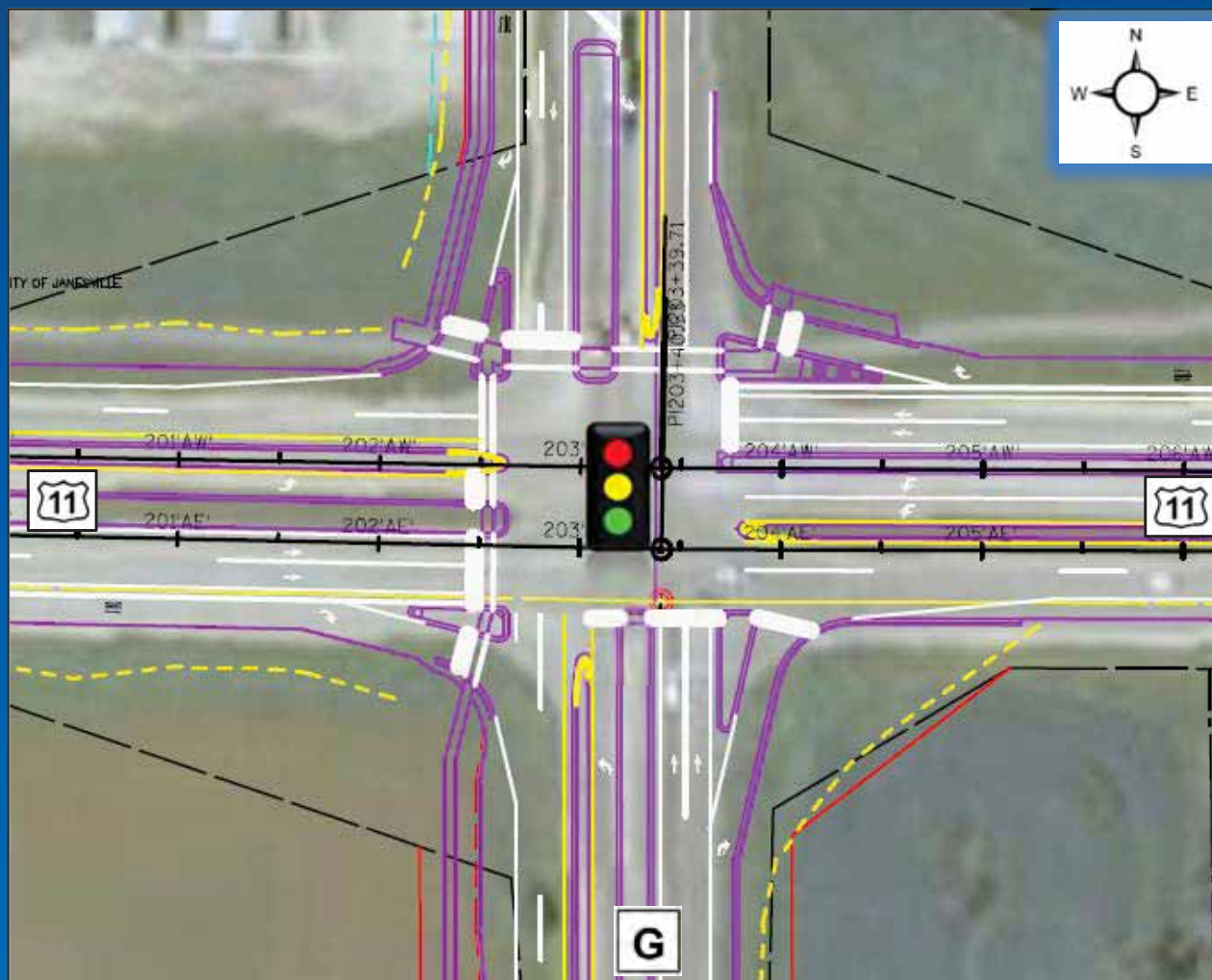
- Sunny Lane to WIS 11
 - Minor horizontal alignment and vertical profile changes
 - Curb sections to minimize real estate impacts
 - Paved shoulders for added safety and bicycle accommodations
 - Strip right of way acquisition and temporary construction easements
 - “Sherman Bridge” replacement



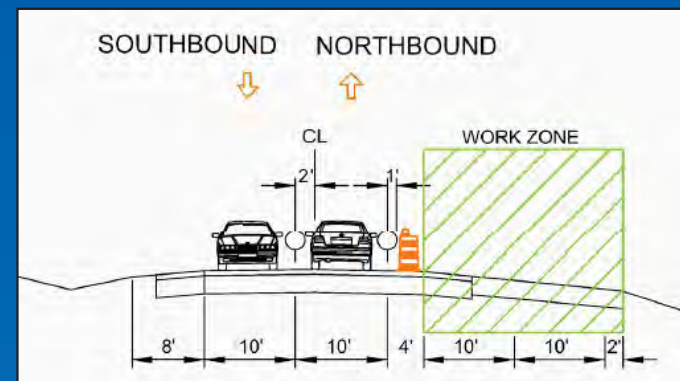
- WIS 11 Intersection Design
 - Additional turn lanes and traffic signal modifications
 - Relocated Detroit Avenue intersection
 - Oversize/overweight (OSOW) truck considerations
 - Bicycle and pedestrian accommodations



WIS 11 Intersection Detail



- County G Construction Staging (Traffic Control)
 - Closed to thru traffic from Huebbe Parkway to WIS 11
 - Posted detour route: Cranston Road to US 51 to WIS 11
 - Staged construction from Huebbe Parkway to ¼ mile south of Sunny Lane to maintain access to local businesses
 - No thru access from Sunny Lane to WIS 11 due to bridge replacement
 - Local access always maintained



- Project Schedule
 - County G previous public meetings
 - June 27, 2012
 - December 5, 2012
 - Preliminary design (60%) substantially complete
 - Real estate acquisition begins fall 2013, complete by May 2014
 - Final design completion May 2014
 - Project construction in late 2014 and 2015

- Construction Schedule
 - Contract letting scheduled for August 2014
 - Early stage work to begin in September 2014
 - Temporary widening and storm sewer work between Huebbe Parkway and Philhower Road
 - Townline Road construction (east and west of County G)
 - Winter shutdown December 2014 – all lanes open to traffic on pavement
 - Project resumes March 2015
 - Project completion October 2015

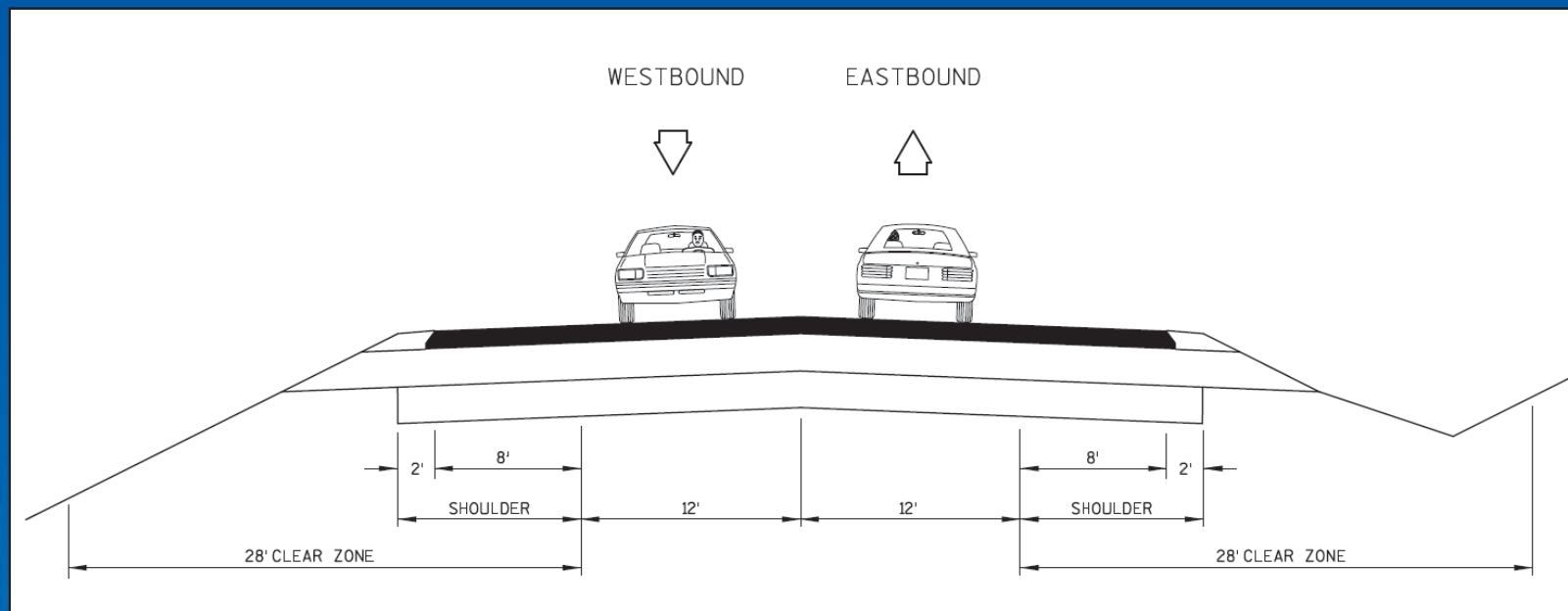
- County BT Overview

- New roadway between County G and County S
- Provides a direct connection between I-39/90 and northern Beloit area
- Total length - Approximately 1.4 miles
- Reconstruction of County G and County S intersections
- Also part of planned Alternate Route for I-39/90
- 2 previous public meetings held
 - Sept. 11, 2011
 - Aug. 27, 2012



- Project Summary
 - Roadway profile relatively flat and slightly higher than existing ground west of Creek Road
 - Approximately follows City of Beloit mapped route
 - Paved shoulders for added safety and bicycle accommodations
 - Sidewalk proposed west of County G
 - New bridge over Turtle Creek
 - Right of way acquisition required along entire route

- Proposed Typical Section
 - 2 lane rural roadway with ditches
 - 8-foot paved shoulder
 - 2-foot gravel shoulder



- Intersections

- County G intersection

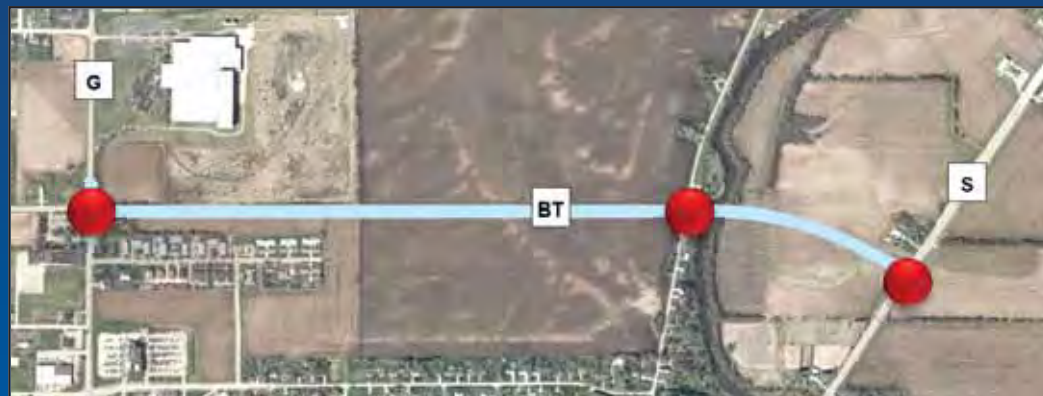
- Add turn lanes
 - New traffic signals
 - OSOW accommodations being evaluated

- Creek Road

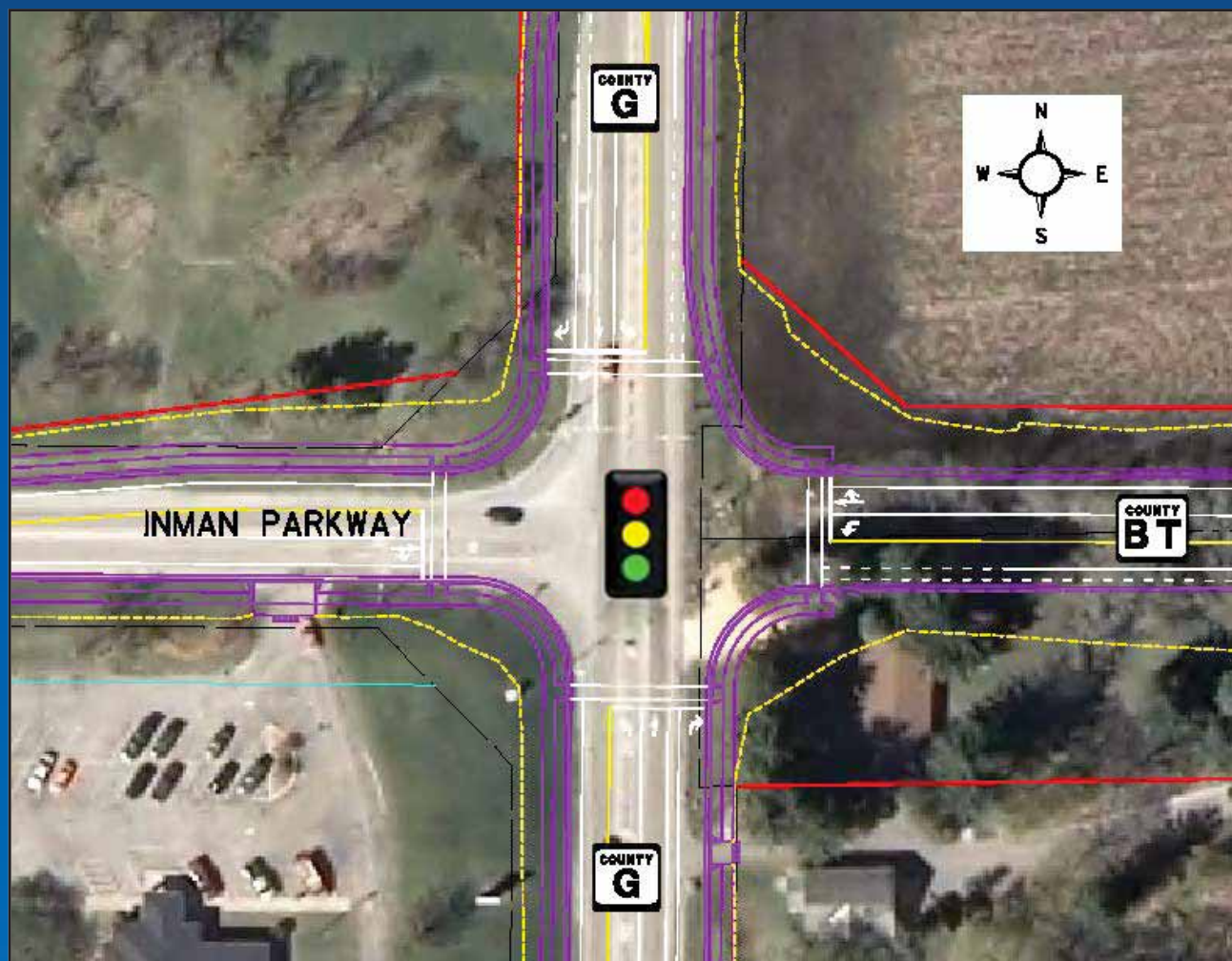
- Stop signs on Creek Road

- County S intersection

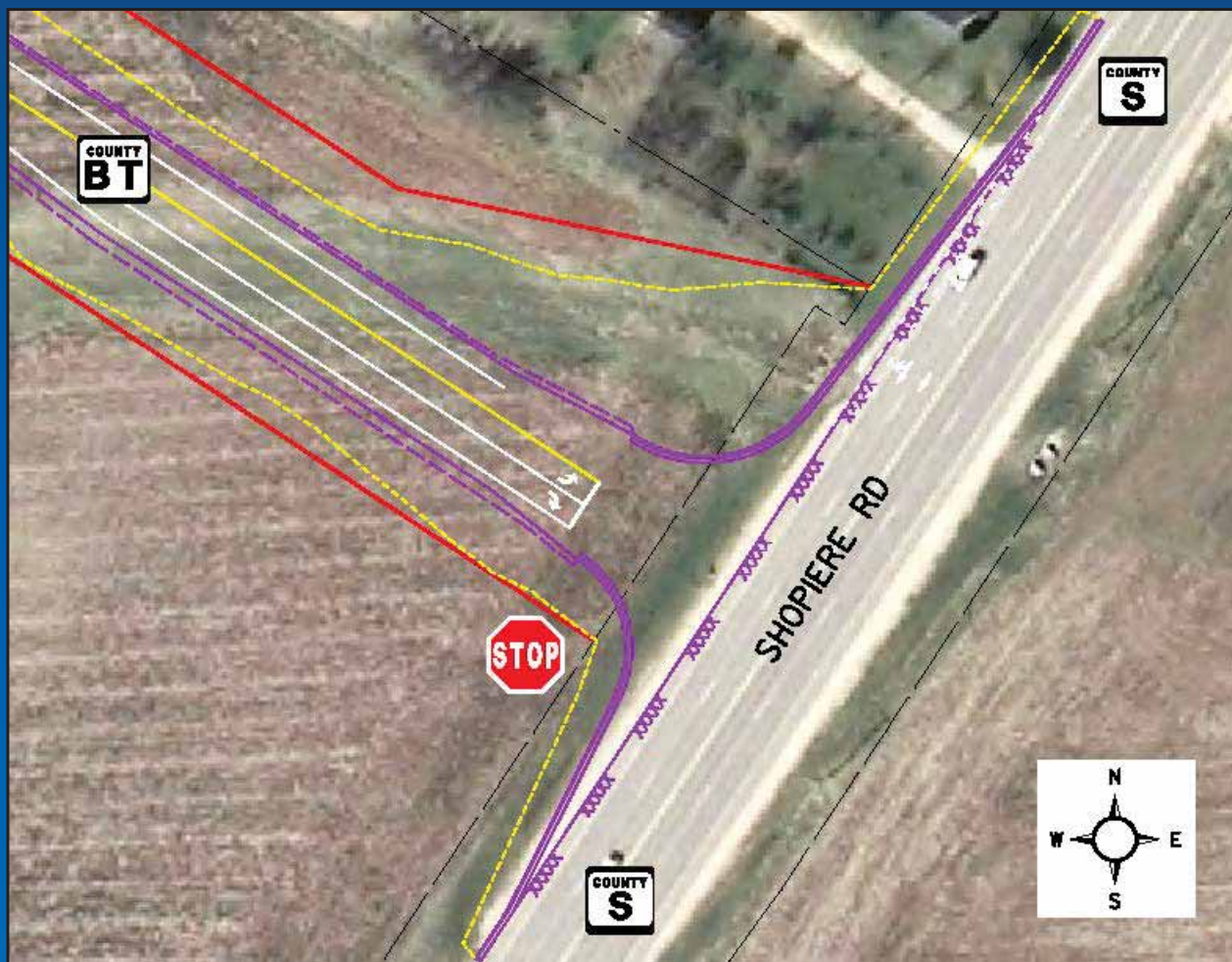
- Stop sign on eastbound County BT
 - 2 lanes on eastbound roadway at intersection
 - OSOW accommodations being evaluated



County G Intersection Detail

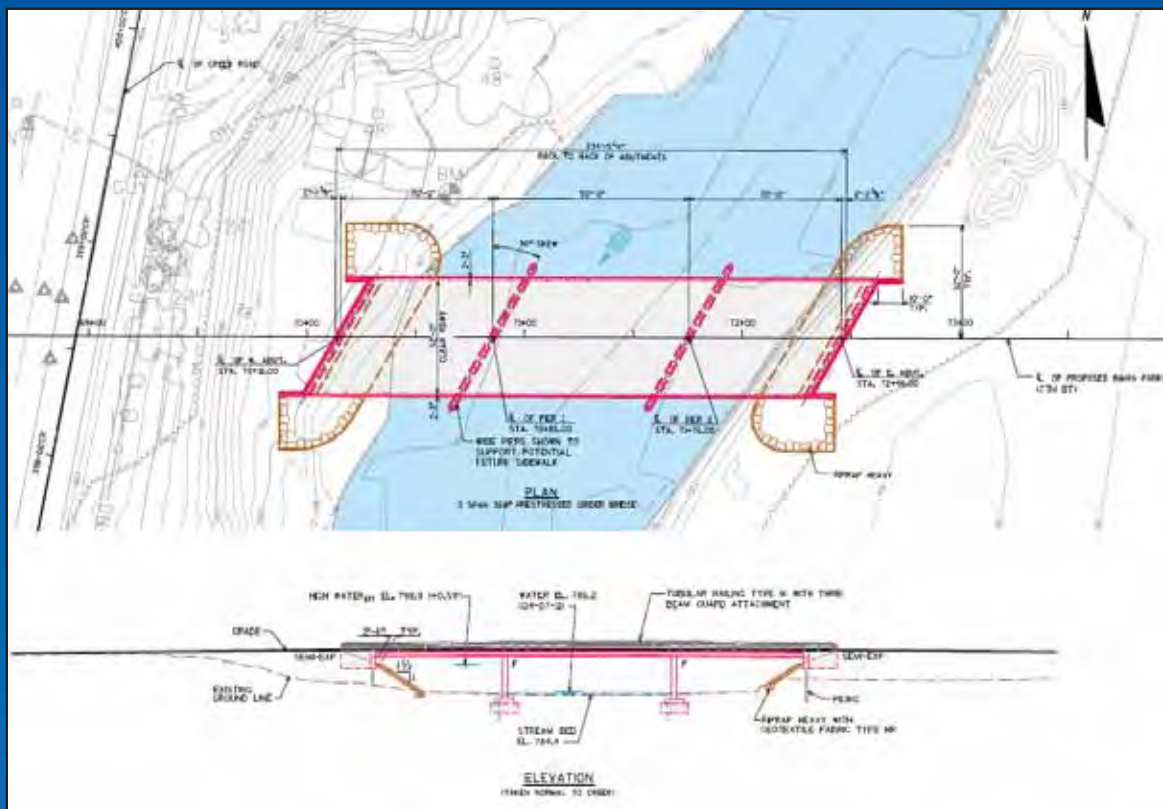


County S Intersection Detail



Turtle Creek Bridge

- New bridge over Turtle Creek
 - Still in preliminary design phase
 - Likely a 3-span girder bridge
 - Evaluating upstream impacts



- Traffic During Construction
 - Project on new alignment - Traffic impacts should be minor
 - Creek Road likely open to local traffic
 - County S to remain open to traffic – Possible temporary closure of outside southbound lane



- Project Milestones
 - Draft Environmental Assessment – August 2013
 - Preliminary Design (60%) Completion – September 2013
 - Environmental Assessment Complete – October 2013
 - Real Estate Acquisition - Late 2013 thru May 2014
 - Final Design Completion – May 2014
 - Project Construction – Late 2014 to mid 2015

Your Input is Valuable



Project website
www.i39-90.wi.gov

Project Facebook
www.facebook.com/WisconsinI3990Project

Questions?



County G and County BT Public Information Meeting

July 31, 2013, 5:00 p.m.

Blackhawk Technical College