

# I-39/90 Project



County S Interchange  
Local Stakeholders Meeting  
May 2, 2013, 6:00 p.m.  
Turtle Town Hall



# Part of I-39/90 South Segment Project

- Extends from Illinois state line to County O
- 12 mile reconstruction and expansion project including:
  - I-43 Interchange
  - County S Interchange
  - WIS 11 (Avalon Road) Interchange
  - Various Bridge Structures

- County S Interchange Reconstruction Overview
  - Maintain diamond interchange configuration
  - Newly aligned structure over I-39/90
  - Access management improvements, including frontage and backage roads
  - Raise County S profile to improve sight distance
  - Right of way acquisition anticipated

- What is Access Management?
  - The process of planning and maintaining appropriate access spacing, access-point design, and total number of access points to a highway system
- Access Control Guidelines at Interchanges
  - No access points within 1,320' from interchange ramps
- What are Some Access Management Benefits?
  - Protects public investment and function of highway facilities
  - Preserves operational safety, capacity and efficiency
  - Promotes orderly development of adjacent properties

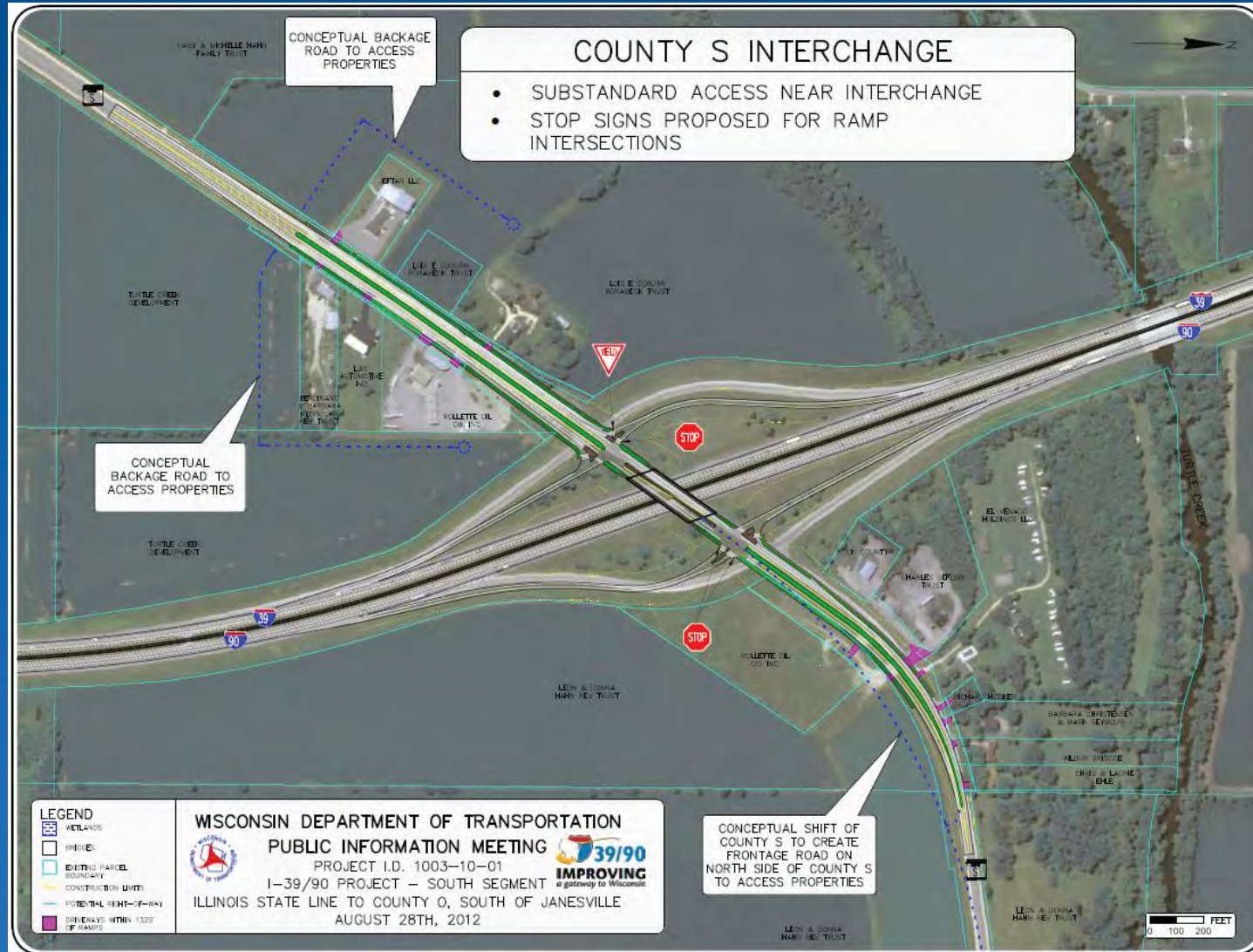


- Current Deficiencies

- Six access points between 500' and 1,200' west of interstate
- Eight access points between 500' and 1,200' east of interstate
- Substandard sight distance at ramp termini and across bridge

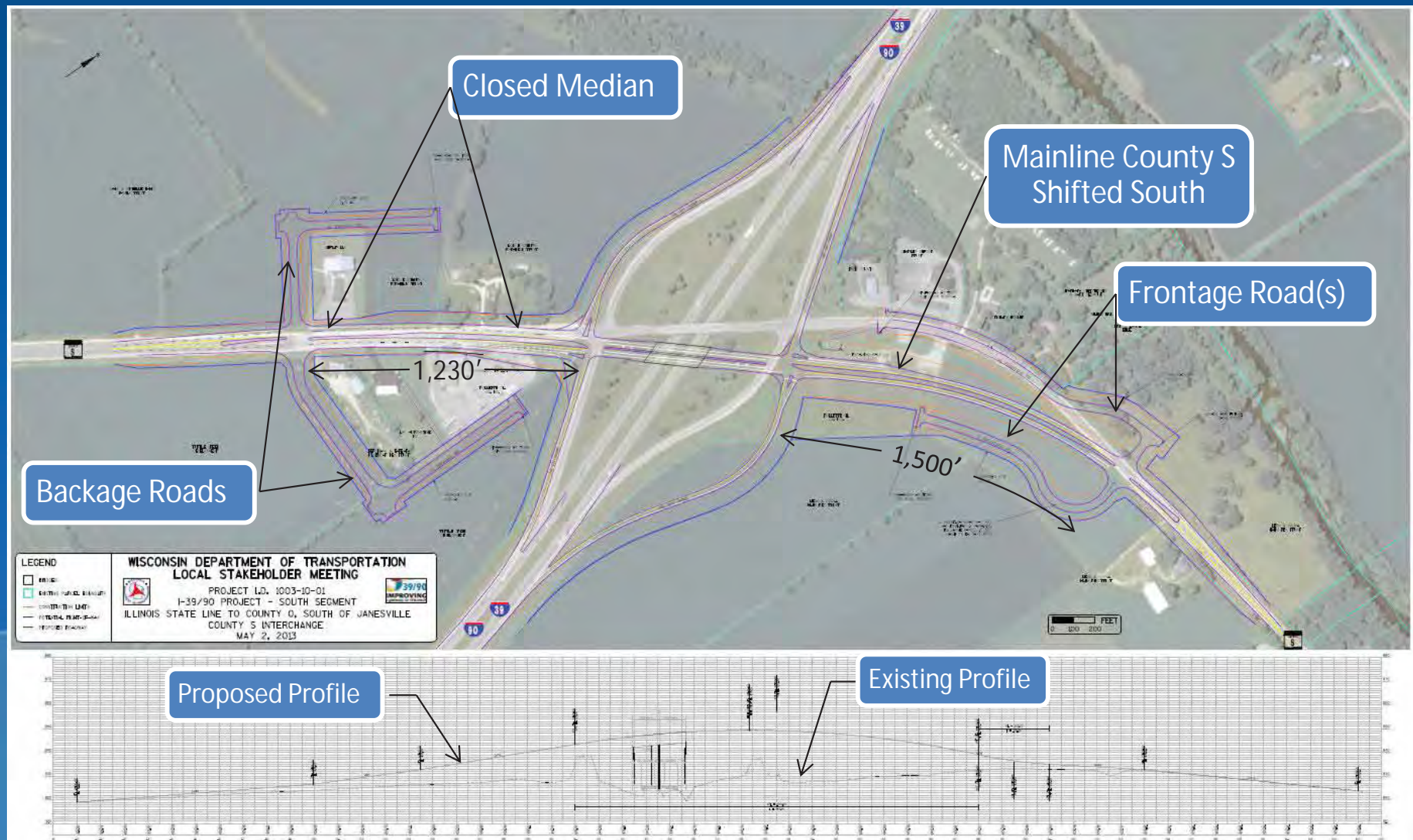


- August 28, 2012 PIM Conceptual Design





# Current Preliminary (30%) Design Overview



# County S Schedule

- Current Stage and Future Schedule
  - Recently completed 30% design
  - Meet with Local Stakeholders to gain feedback (today)
  - Preliminary design (60%) completion mid to late 2013
    - Individual property owner meetings to take place as needed
  - Real estate acquisition late 2013/ early 2014
  - Final design completion in 2014
  - Project construction in 2014/2015, dependent upon available funding



# Your Input is Valuable



Project website  
[www.i39-90.wi.gov](http://www.i39-90.wi.gov)

Project Facebook  
[www.facebook.com/WisconsinI3990Project](https://www.facebook.com/WisconsinI3990Project)

# Questions?



# I-39/90 Project



County S Interchange  
Stakeholders Meeting  
May 2, 2013, 6:00 p.m.  
Turtle Town Hall