

I-39/90 Project



South Segment Public Information
Meeting #1

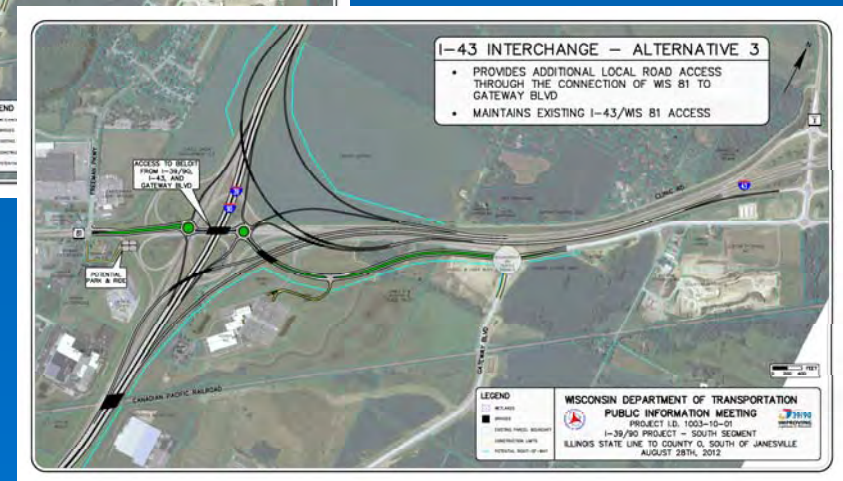
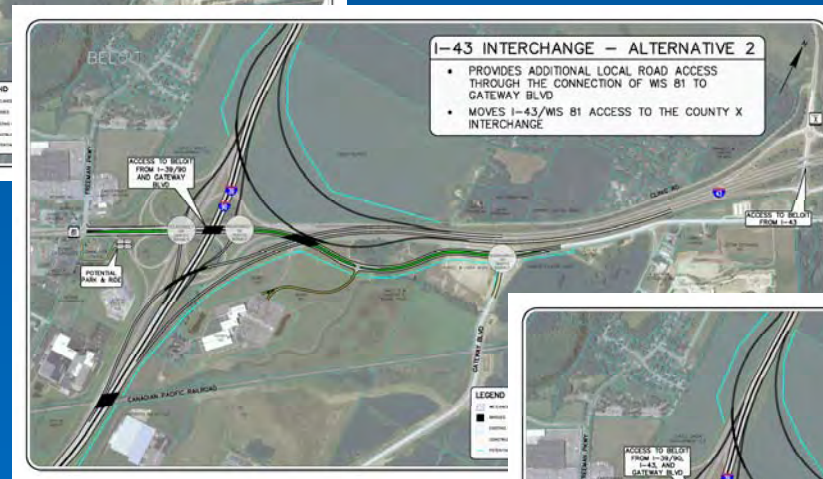
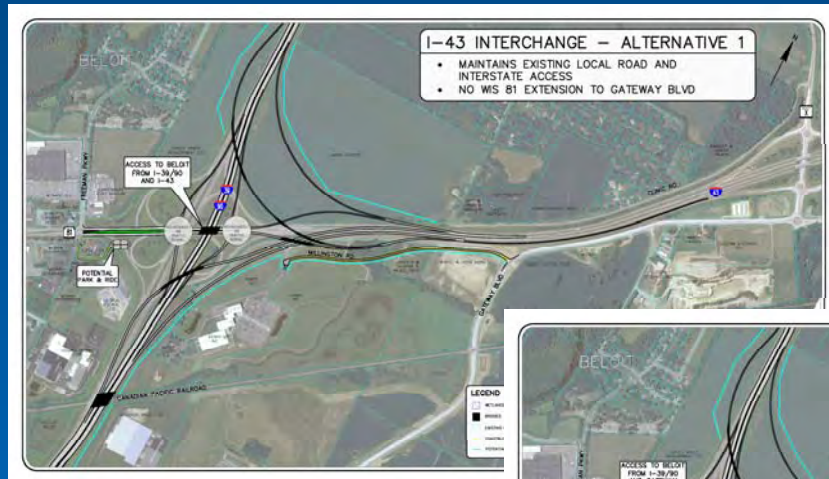
August 28, 2012, 5:00 p.m.

Turtle Town Hall

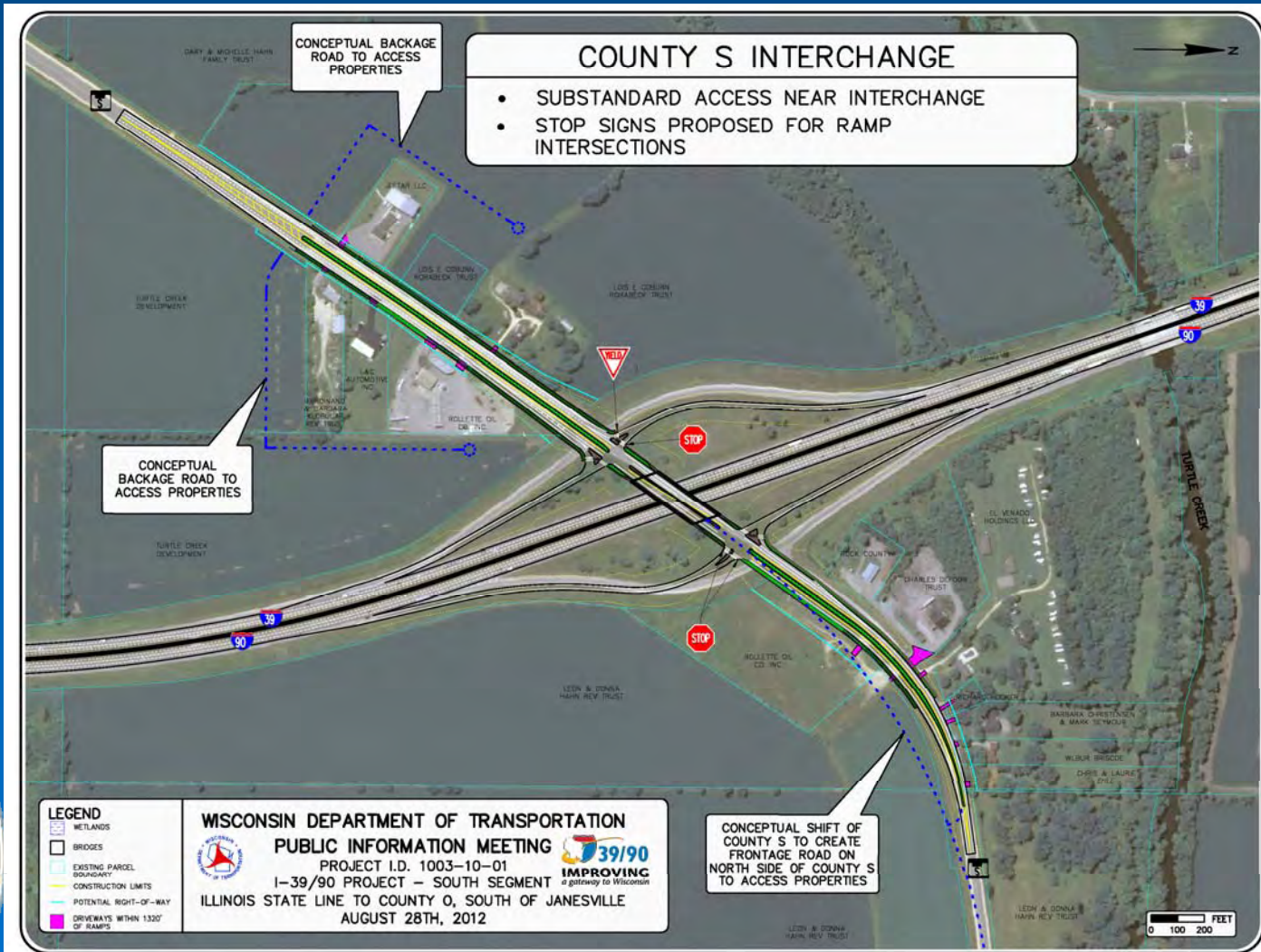
Exhibits Presented Today

- Exhibits
 - I-39/90 South Segment Improvements
 - I-43 Interchange – 3 Alternatives
 - County S Interchange
 - WIS 11 (Avalon Road) Interchange – 2 Alternatives
 - Traffic Management
 - Traffic Staging During Construction
 - Intelligent Transportation Systems (ITS)
 - Bridge Aesthetics

I-43 Interchange – 3 Alternatives



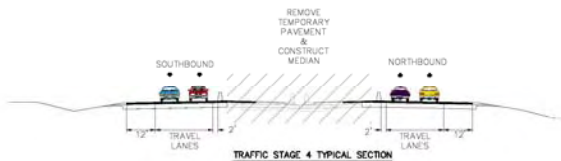
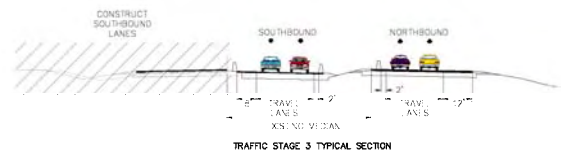
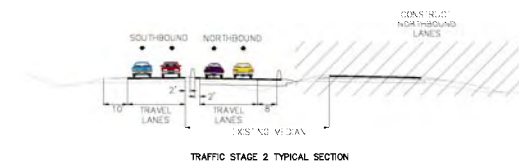
County S Interchange - Access





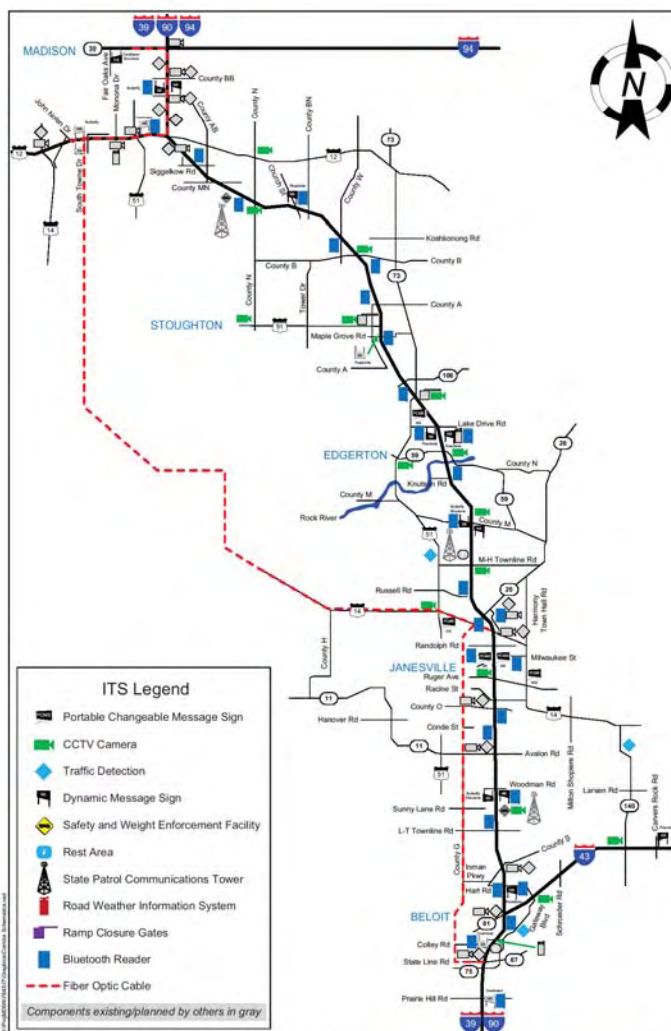
Traffic Management

TRAFFIC STAGING DURING CONSTRUCTION



WISCONSIN DEPARTMENT OF TRANSPORTATION
PUBLIC INFORMATION MEETING
PROJECT I.D. 1003-10-01
I-39/90 PROJECT - SOUTH SEGMENT
ILLINOIS STATE LINE TO COUNTY D, SOUTH OF JANESVILLE
AUGUST 28TH, 2012

Traffic Management

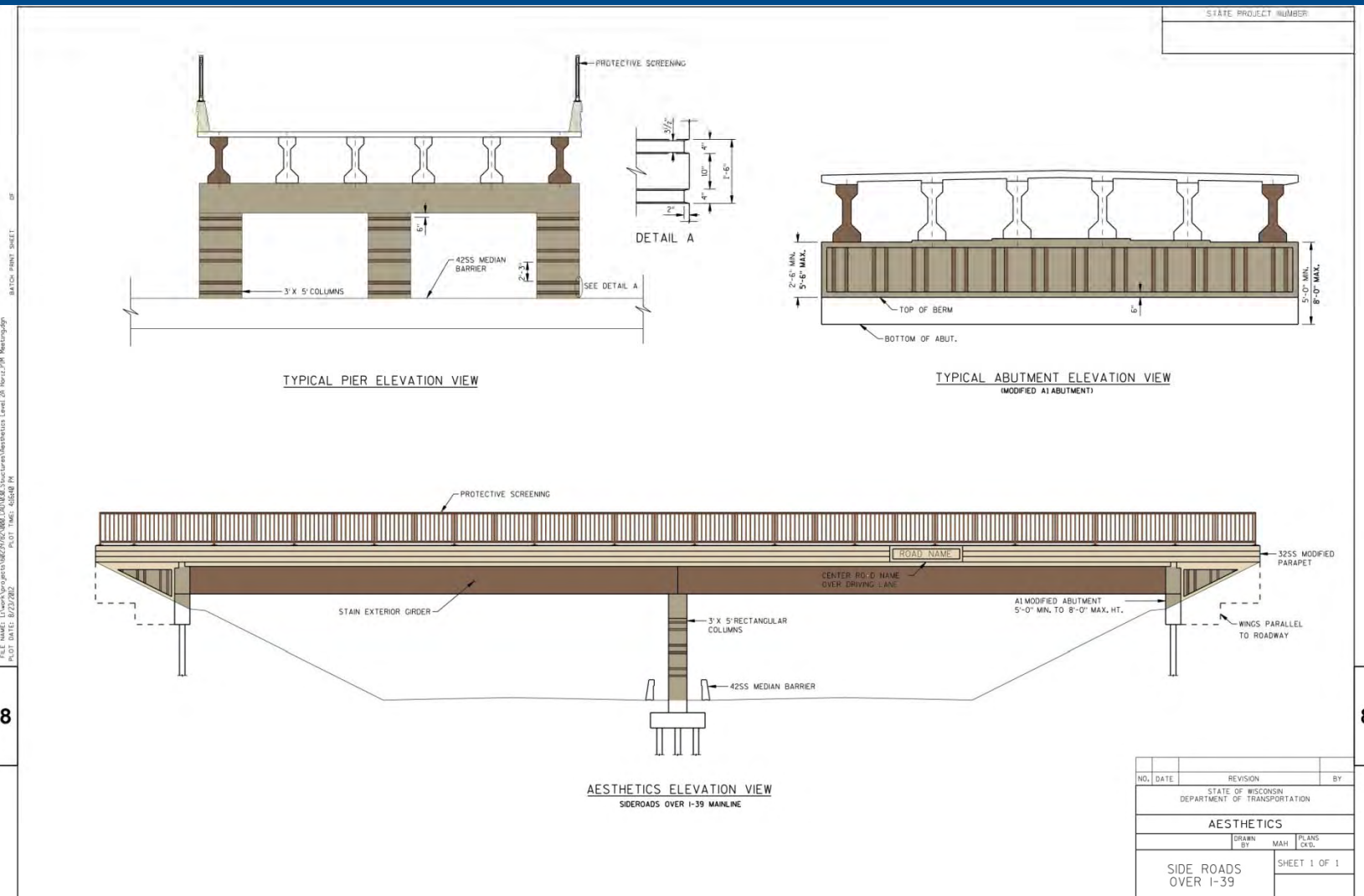


Early Letting ITS Components (Recommended Deployment)


I-39/90 Expansion
SW Region, Wisconsin Department of Transportation

Figure 1

Aesthetics – Bridges over I-39/90



Your Input is Valuable

- 
- 1) Review Exhibits
 - 2) Ask Questions
 - 3) Provide Input on Comment Form

Project website
www.i39-90.wi.gov

Project Facebook
www.facebook.com/WisconsinI3990Project

Questions?

I-39/90 Project



South Segment Public Information
Meeting #1

August 28, 2012, 5:00 p.m.

Turtle Town Hall