



# I-39/90 Corridor



**I-39/90 North Segment Public Information Meeting**  
April 24, 2012, 5 p.m. to 7 p.m.  
Edgerton Public Library



## Welcome



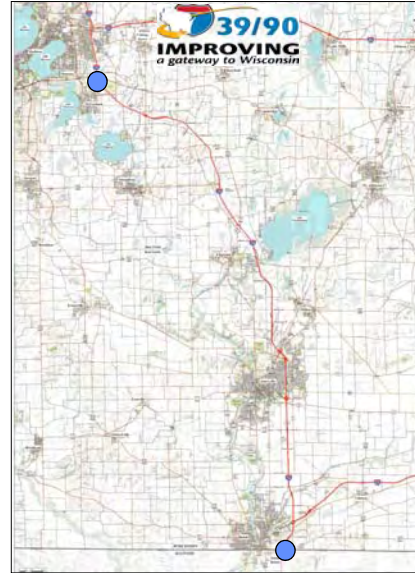
- **WisDOT Project Manager – Craig Pringle**
- **Consultant Project Manager – Jeff Hanson**
- **Deputy Project Manager – Mike McCarthy**
- **Deputy Project Manager – Lisa Dreifuerst**
- **Public Involvement Leader – Darren Fortney**



# I 39-90 Corridor



- North Segment
  - Dane/Rock County Line – US 12/18
- Central Segment
  - County O – Dane/Rock County Line
- South Segment
  - IL/WI Stateline – County O



# North Segment





## Project Background



- Environmental Assessment (EA) signed on July 29, 2008
- EA identified and evaluated:
  - Purpose and need of overall project
  - Range of alternatives
  - Potential environmental impacts
- Finding of No Significant Impact (FONSI) signed on October 1, 2010




## Purpose and Need



- Meet current design standards
- Improve overall safety
- Accommodate future traffic with an acceptable level of service (LOS)
- Replace aging pavements and structures



- **Removal and reconstruction of existing freeway lanes**
  - **Addition of a third lane in each direction to create 6-lane facility**
  - **Reconstruction of interchanges**
  - **Reconstruction of over/underpasses**
- 
- An aerial photograph showing a complex highway interchange with multiple lanes, overpasses, and surrounding greenery.



- **Mainline**

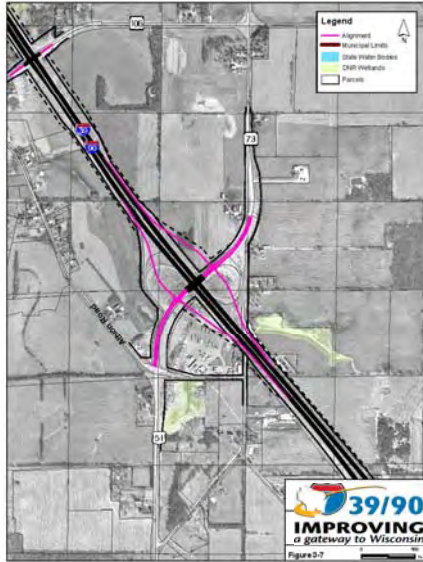




## Preferred Alternative



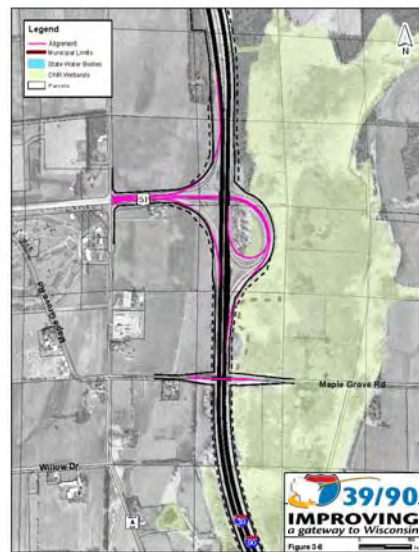
### ■ US 51/WIS 73 Interchange



## Preferred Alternative



### ■ US 51 Interchange







## Preferred Alternative



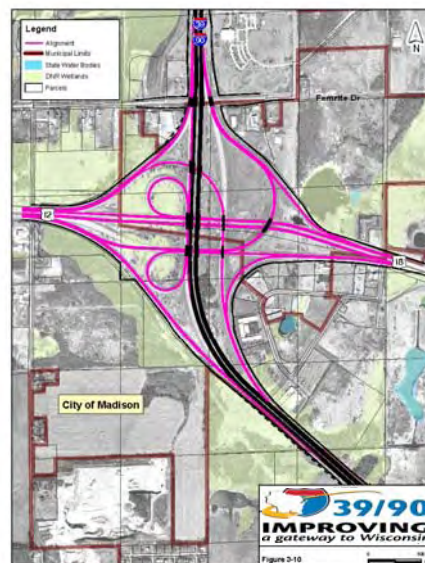
### ■ County N Interchange



## Preferred Alternative



### ■ US 12/18 (Beltline) Interchange





## Scope of Work



- Preliminary Design
- Public Involvement
- Agency Coordination
- Environmental Assessment Update/Design Refinement Report



## Scope of Work



- Preliminary Design
  - Survey work
  - Identifying right-of-way needs
    - ◆ Some right-of-way acquisition will be required
  - 30% and 60% design





## Scope of Work



### ■ Public Involvement

- Public Information Meetings
  - ◆ 1,070 people in mailing database
- Local Official Meetings
  - ◆ 130 people in mailing database
- Special interest meetings
- Property owner meetings
- Agency coordination meetings



## Scope of Work



### ■ Agency Coordination

- Federal agencies
- State agencies
- Native Americans
- State elected officials
- Regional/local agencies
- Utilities



### ■ Environmental Assessment Update/Design Refinement Report





## Activities to Date



- Survey (right-of-way, archeological, etc.) – February 2012
- US 12/18 Beltline Interchange Stakeholders Meeting – February 7, 2012
- Ho-Chunk Nation Coordination Meeting – March 5, 2012
- Operational Planning Meeting – March 12, 2012
- Agency Coordination – Ongoing



## Project Schedule



- 30 % Design Plans – June 2012
- 60 % Design Plans – June 2013
- Design Study Report – June 2013
- P.S. & E. – TBD
- Begin Construction – TBD; some portions may begin as early as 2015

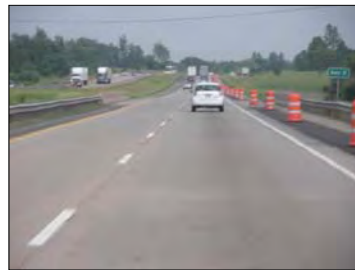




## Construction Staging



- I-39/90 will remain open to traffic for duration of reconstruction project
- There will be two lanes of traffic in each direction
- Some lane restrictions may be needed during off-peak travel hours



## Next Steps



- Future Public Information and Local Official Meetings
  - Tentatively scheduled for:
    - ◆ Summer/Fall 2012
    - ◆ Winter 2013





# Questions?

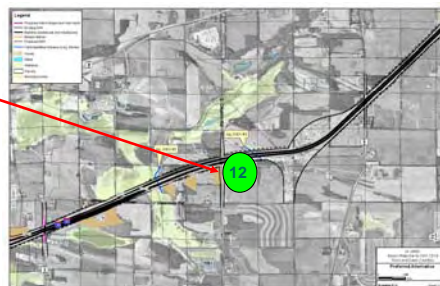


## Input 'Dot' Exercise



STEP 1 - Place number on the map.

STEP 2 - Write number and comment on form.



13

14

Place a numbered sticker on the map near the location for which you would like to comment. Write the sticker number in the box below and comment in the adjacent spaces:

12

U.S. 52 Bridge Interchange Location A  
Project: Conversion Study  
Date: 10/1/04

Please comment on the location of the bridge and the interchange. Write the number of the location in the box below and comment in the adjacent spaces.

<input type="checkbox"/>	
<input type="checkbox"/>	
<input type="checkbox"/>	
<input type="checkbox"/>	
<input type="checkbox"/>	



## Team Contacts



**Craig Pringle** – WisDOT Project Manager

WisDOT – SW Region

2101 Wright Street

Madison, WI 53704

608-242-8058

[craig.pringle@dot.wi.gov](mailto:craig.pringle@dot.wi.gov)

**Jeff Hanson** – Consultant Project Manager

Dane Partners

901 Deming Way, Suite 203

Madison, WI 53717

608-827-8810

[jhanson@emcsinc.com](mailto:jhanson@emcsinc.com)

**Darren Fortney**

Public Involvement Leader

Dane Partners

608-620-6191

[dfortney@sehinc.com](mailto:dfortney@sehinc.com)

**Mike McCarthy**

Deputy Project Manager

Dane Partners

608-827-8810

[mmccarthy@emcsinc.com](mailto:mmccarthy@emcsinc.com)

**Lisa Dreifuerst**

Deputy Project Manager

Dane Partners

608-243-6478

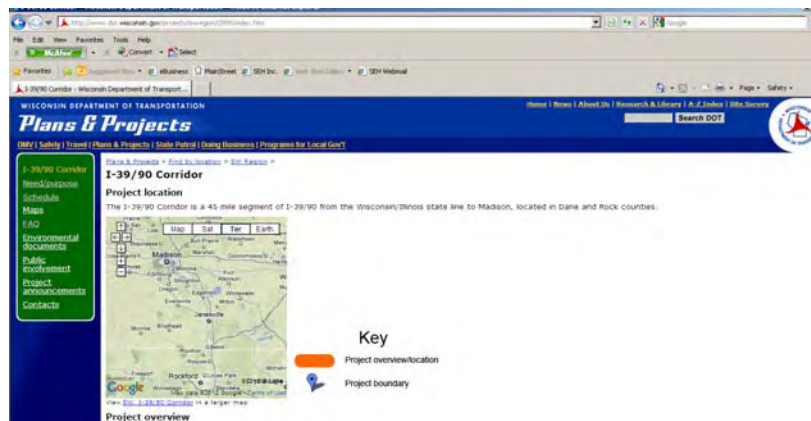
[ldreifuerst@otie.com](mailto:ldreifuerst@otie.com)



## Project Website



[www.I39-90.wi.gov](http://www.I39-90.wi.gov)





# I-39/90 Corridor



**I-39/90 North Segment Public Information Meeting**  
April 24, 2012, 5 p.m. to 7 p.m.  
Edgerton Public Library