

APRIL 2015

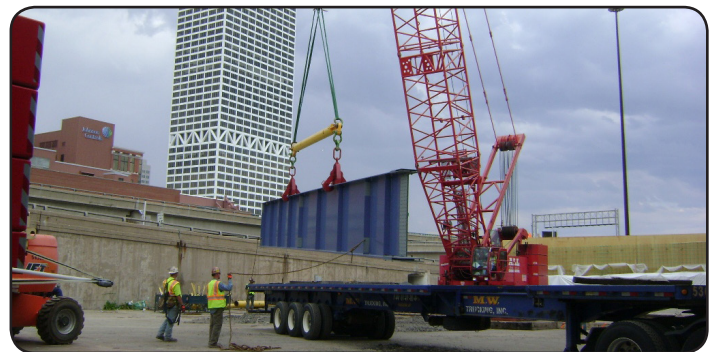


PROJECT UPDATE

I-794 Lake Freeway/Hoan Bridge Project Information

STEEL BEAM DELIVERY TO BEGIN IN LATE APRIL

Over the next several weeks, steel beams that will support the new I-794 bridge decks will be delivered daily. Motorists may encounter some delays on local streets and on I-794 West while these large beams are moved through the city streets for delivery. Beginning April 20, crews will begin lifting and setting these steel components over Water Street, which will require overnight closures of the street and sidewalks. Crews will then continue eastward setting beams to form the new bridges of I-794 West from the Milwaukee River to the Lake Interchange.



Please note that all work is weather dependent and subject to change.



 @wihoanbridge
 /wihoanbridge
projects.511wi.gov

