

REGIONAL ROUTES to FOXCONN

June 18-July 31, 2018

WisDOT

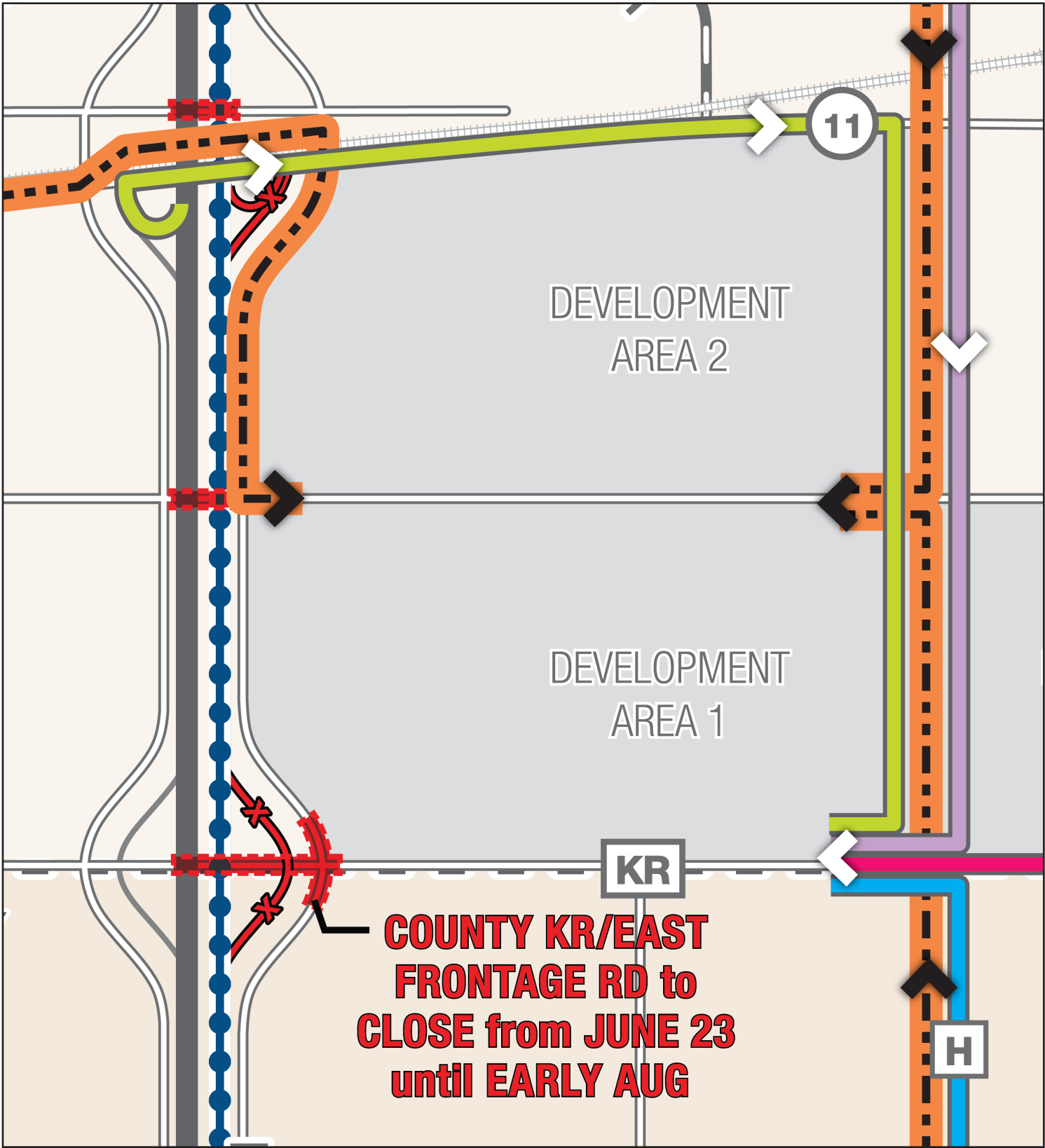
- » Freeway NB reconstruction

Foxconn

- » Continued mobilization
- » Site work, Phase 1a

NOTE:

- » All work/closures *north of WIS 20* is scheduled to *start in mid-/late July*



LEGEND

Freeway or development road construction

ACCESS ROUTES

General access route (workers)

Haul route  
Return trips to the west shall use the controlled intersection at County H/WIS 11

CLOSURES

Roadway closed (under I-94 mainline)

Ramp closed (I-94 entrance/exit)





# REGIONAL ROUTES to FOXCONN

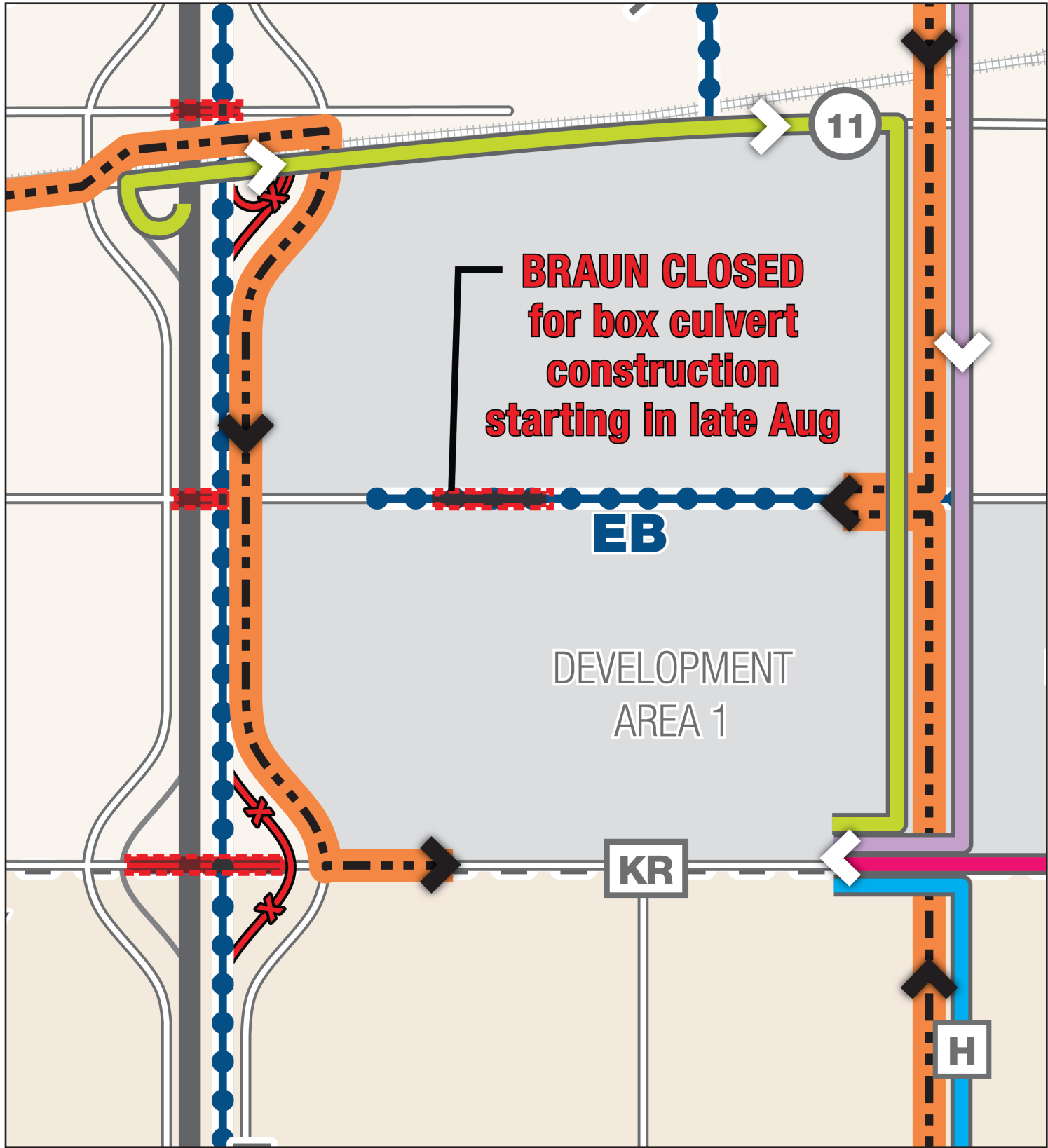
August 1-August 30, 2018

## WisDOT

- » Freeway NB reconstruction
- » Braun Rd box culvert reconstruction
- » Braun Rd EB reconstruction
- » International Dr NB construction

## Foxconn

- » Continued mobilization
- » Site work, Phase 1a



## LEGEND

Freeway or development road construction

## ACCESS ROUTES

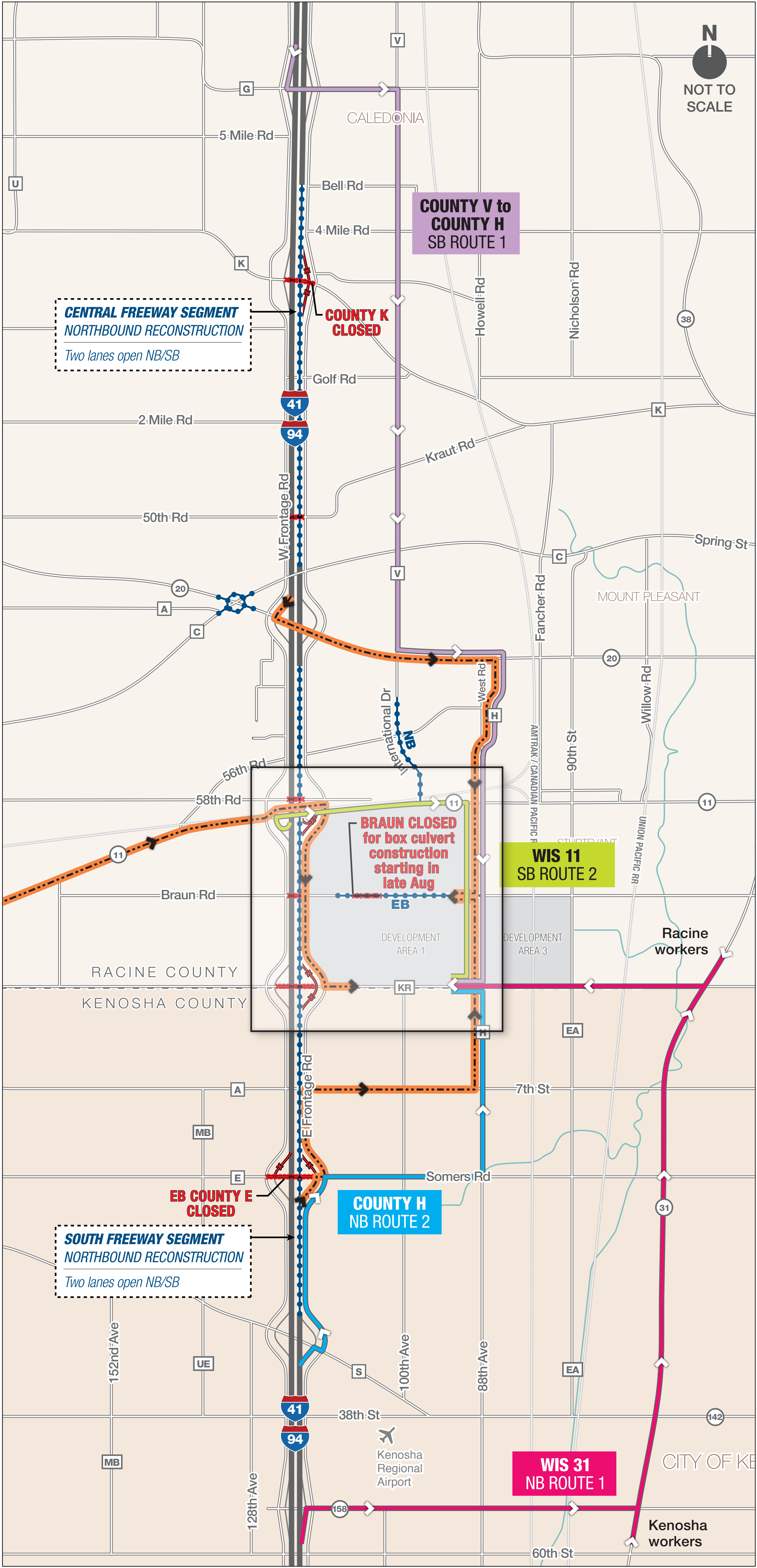
General access route (workers)

Haul route  
Return trips to the west shall use the controlled intersection at County H/WIS 11

## CLOSURES

Roadway closed (under I-94 mainline)

Ramp closed (I-94 entrance/exit)



JULY 16, 2018 | DRAFT



# REGIONAL ROUTES to FOXCONN

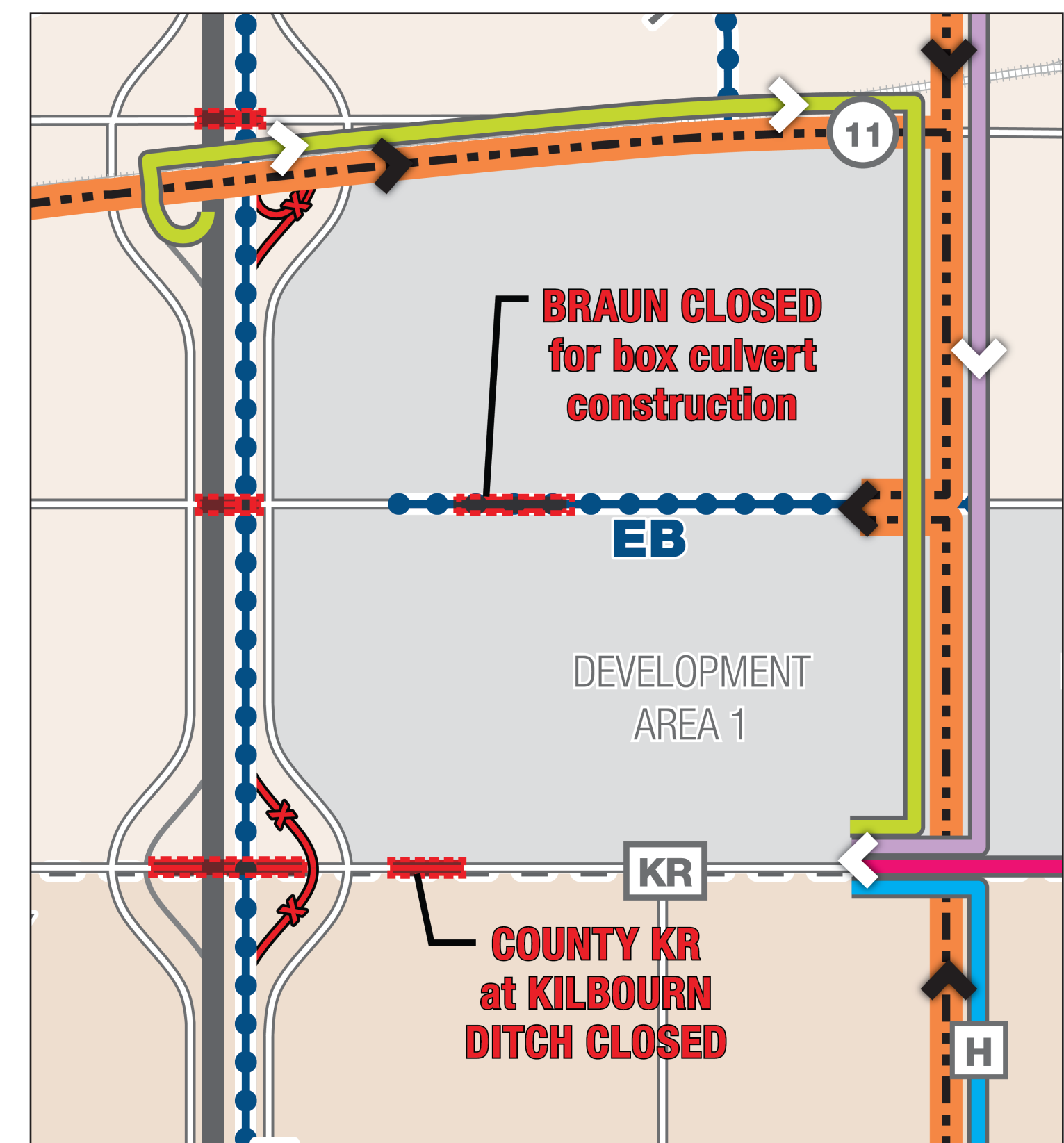
September-November 2018

## WisDOT

- » Freeway NB reconstruction
- » County KR box culvert construction
- » Braun Rd EB reconstruction
- » International Dr NB construction

## Foxconn

- » Continued mobilization
- » Site work, Phase 1a



## LEGEND

Freeway or development road construction

## ACCESS ROUTES

General access route (workers)

Haul route  
Return trips to the west shall use the controlled intersection at County H/WIS 11

## CLOSURES

Roadway closed (under I-94 mainline)

Ramp closed (I-94 entrance/exit)

JULY 16, 2018 | DRAFT





# REGIONAL ROUTES to FOXCONN

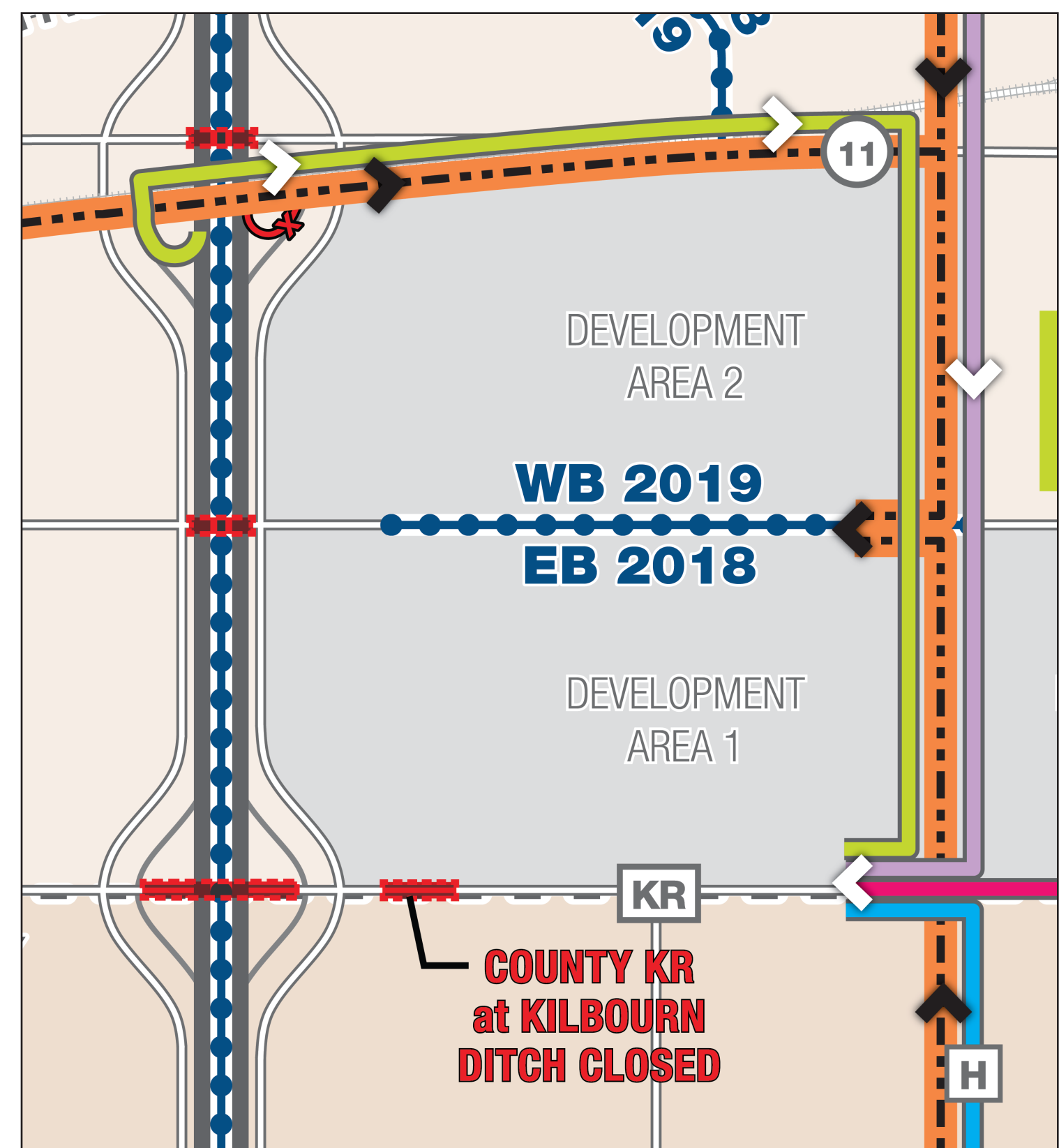
December 2018-January 2019

## WisDOT

- » Freeway median reconstruction
- » Braun Rd EB & WB reconstruction
- » International Dr NB & SB construction

## Foxconn

»



## LEGEND

- Freeway or development road construction

## ACCESS ROUTES

- ➡ General access route (workers)
- ➡ Haul route  
Return trips to the west shall use the controlled intersection at County H/WIS 11

## CLOSURES

- XXXX Roadway closed (under I-94 mainline)
- XX Ramp closed (I-94 entrance/exit)

JULY 16, 2018 | DRAFT





# REGIONAL ROUTES to FOXCONN

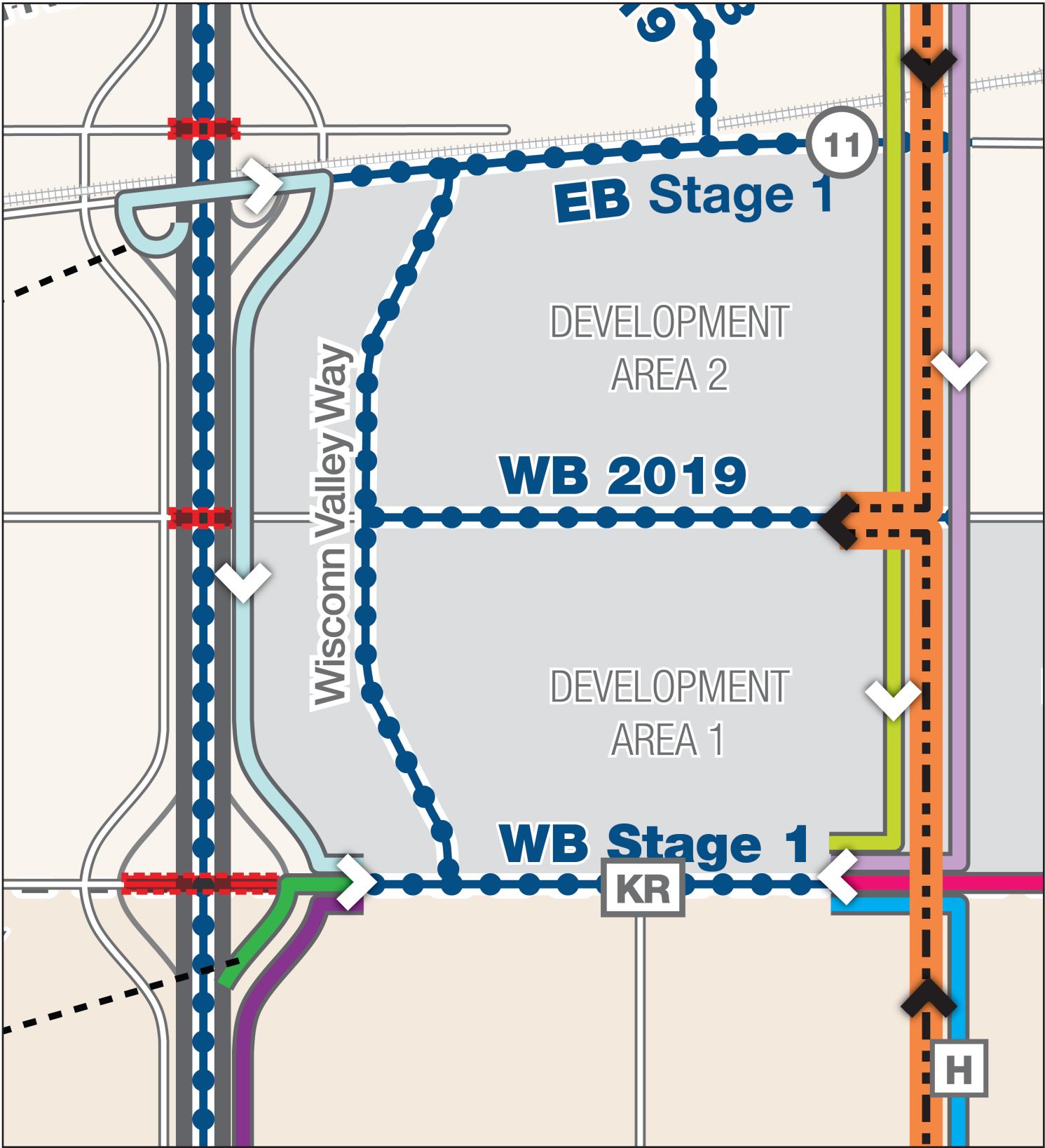
February-April 2019

WisDOT

- » Freeway median reconstruction
- » WIS 11 EB reconstruction
- » Braun Rd EB & WB reconstruction
- » County KR EB & WB reconstruction
- » International Dr NB & SB construction
- » Wisconn Valley Way construction

Foxconn

- » LCM
- » LCD manufacturing, Phase 1 (Q1 2019, foundations start)



LEGEND

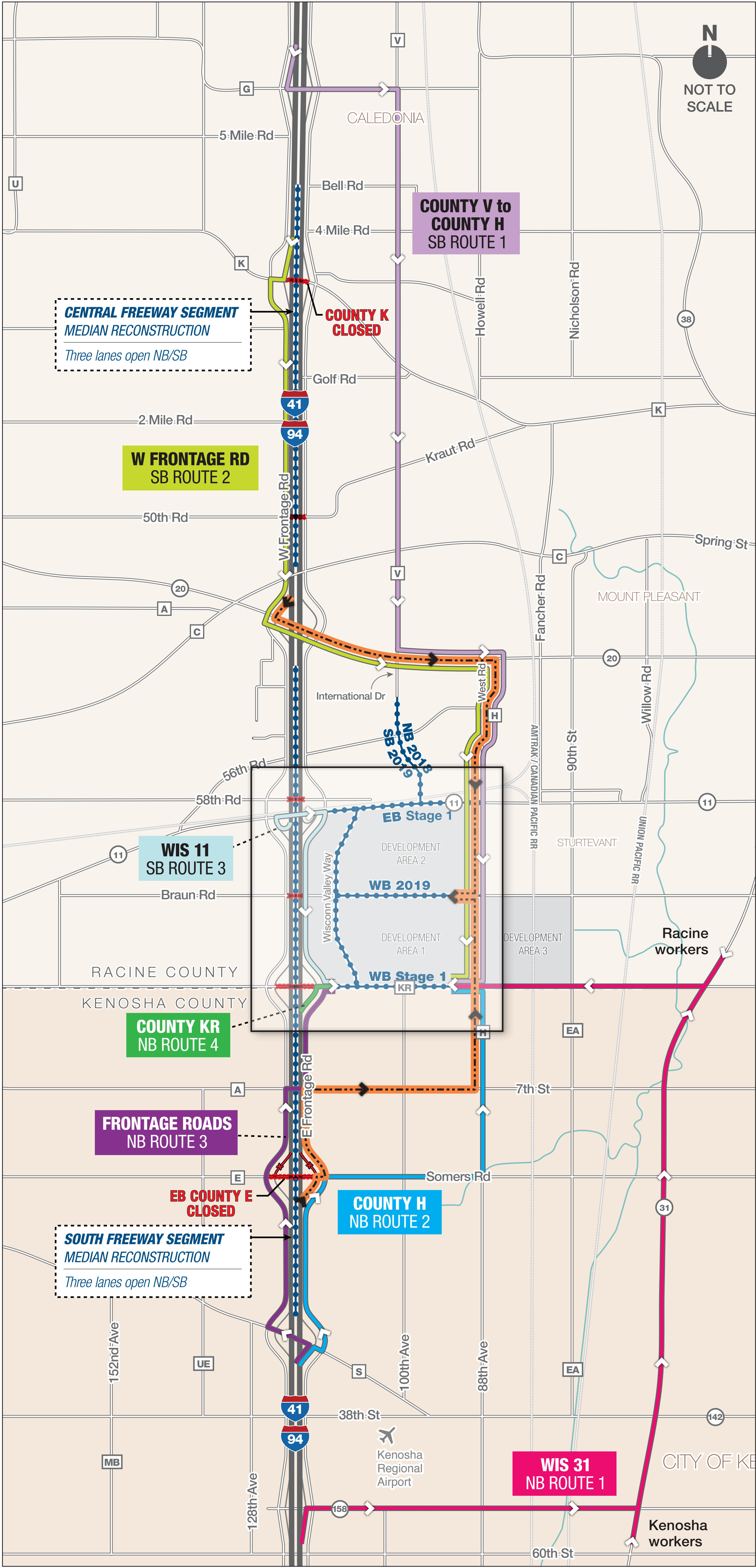
Freeway or development road construction

ACCESS ROUTES

- General access route (workers)
- Haul route  
Return trips to the west shall use the controlled intersection at County H/WIS 11

CLOSURES

- Roadway closed (under I-94 mainline)
- Ramp closed (I-94 entrance/exit)





REGIONAL ROUTES to FOXCONN

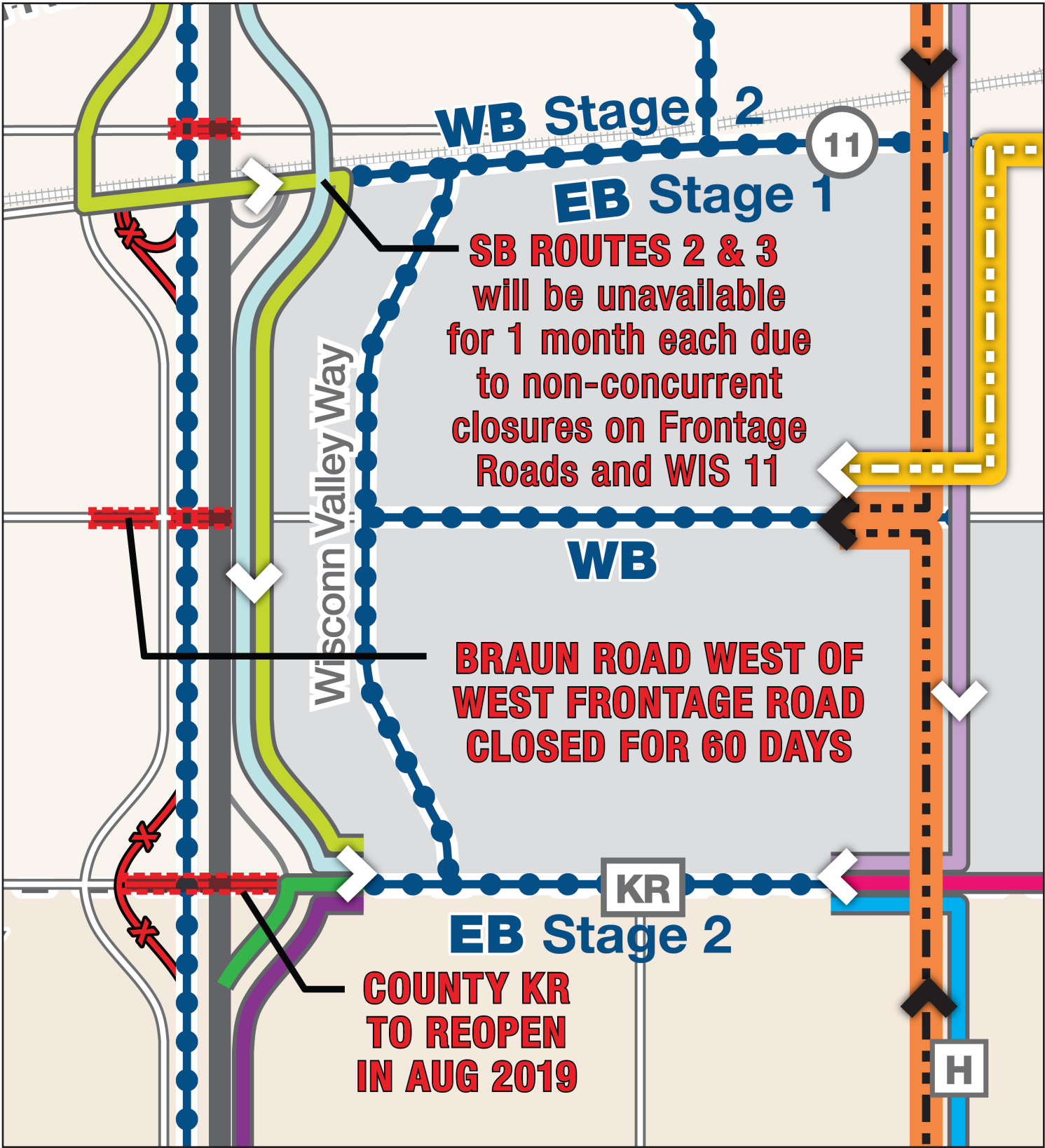
May-November 2019

WisDOT

- » Mainline SB reconstruction
- » WIS 11 EB & WB reconstruction
- » Braun Rd WB reconstruction
- » County KR EB/WB reconstruction
- » Wisconn Valley Way construction

Foxconn

- » Continue Phase 1 construction
- » LCD manufacturing, utilities, gas, electric, water, sanitary (Q4 2019)



LEGEND

Freeway or development road construction

ACCESS ROUTES

General access route (workers)

Haul route

Overheight route

CLOSURES

Roadway closed (under I-94 mainline)

Ramp closed (I-94 entrance/exit)

