

COUNTY KR – PHASE 2

County H to Old Green Bay Road
Racine and Kenosha Counties

Public Hearing For Environmental Assessment

Somers Village Hall
February 28, 2019
4 to 7 p.m.

Project I.D. 3763-00-04



PRESENTATION OUTLINE

- Public hearing agenda
- Public hearing purpose
- Environmental document process
- Instructions for providing public testimony
- Project overview, purpose and need, alternatives, description
- Environmental evaluation summary
- Property acquisition and relocation procedures
- Project schedule and next steps
- Handouts, documents and exhibits available
- WisDOT contact information

PUBLIC HEARING AGENDA

- | | |
|-------------|--|
| 4 to 7 p.m. | Sign in and pick up handout at registration table
Review exhibits and visit with project staff in Lobby Hallway
Private verbal and written testimony available |
| 4:30 p.m. | WisDOT presentation begins
Public verbal testimony begins after presentation |
| 7 p.m. | End of public hearing |

PUBLIC HEARING PURPOSE

- Public review of
 - Project design features
 - Alternatives considered
 - Environmental Assessment (EA)
- Public testimony
 - Entered into public hearing record
 - Reviewed by WisDOT prior to selection of preferred alternative

Purpose of the Public Hearing

The objective of the public hearing and environmental document availability period is to get the most complete expression of public opinion regarding the project aspects listed in this handout on the record. Testimony provided during this public hearing and during the environmental document availability period will be considered along with all other judgments and opinions received before further decisions are made on the proposed project alternatives. This public hearing includes a project presentation and opportunities to provide public/private verbal testimony to a court reporter and/or written testimony. All testimony will be entered into the public hearing record along with other public hearing presentations, exhibits and materials.

This public hearing will focus on the following aspects of the proposed County KR – Phase 2 project:

- The location and design features of the proposed improvements and alternatives being considered.
- The Wisconsin Environmental Policy Act public hearing process, as applicable, on projects which include preparation of an environmental document. The final environmental document prepared following this public hearing will be the decision document for the proposed improvements. Copies of the environmental document are available for review at this public hearing.
- Project activities that require authorization from the U.S. Army Corps of Engineers under the Clean Water Act for placing fill into waters of the United States including wetlands.

Environmental Document Process

The environmental documentation process includes development of a project purpose and need, range of alternatives, evaluation and screening of alternatives and selection of a preferred alternative. Numerous factors are considered throughout the environmental document development process including safety, mobility, compatibility with state/regional/local plans, engineering design standards, impacts to the socio-economic, natural and physical environment, cost, and input from the public and state/federal review agencies.

The County KR – Phase 2 project is currently at the Environmental Assessment stage. The Environmental Assessment documents the project purpose and need for the proposed improvements, alternatives considered, environmental impacts of the alternatives retained for detailed study, and public involvement and agency coordination during the development of the purpose and need and refinement of alternatives. The final environmental document will select the preferred alternative and summarize the results of public testimony provided during the public hearing and document availability period along with agency comments on the Environmental Assessment.

Information for the Public Hearing Record

In addition to the testimony provided at this public hearing, all exhibits, handouts, audio/visual presentations and displays available for viewing at the public hearing will be included in the official public hearing record. Page 15 of this handout contains a complete listing of these materials. Other materials, along with other written testimony received after the public hearing, will be added to the official public hearing record provided they are postmarked or received no later than March 7, 2019.

ENVIRONMENTAL DOCUMENT PROCESS

- EA process
 - Purpose and need
 - Considers and evaluates range of alternatives
- EA considers various factors
 - Safety and mobility
 - Impacts to social, natural and physical environment
 - Compatibility with local/regional plans
 - Public and agency input
 - Cost estimate

Purpose of the Public Hearing

The objective of the public hearing and environmental document availability period is to get the most complete expression of public opinion regarding the project aspects listed in this handout on the record. Testimony provided during this public hearing and during the environmental document availability period will be considered along with all other judgments and opinions received before further decisions are made on the proposed project alternatives. This public hearing includes a project presentation and opportunities to provide public/private verbal testimony to a court reporter and/or written testimony. All testimony will be entered into the public hearing record along with other public hearing presentations, exhibits and materials.

This public hearing will focus on the following aspects of the proposed County KR – Phase 2 project:

- The location and design features of the proposed improvements and alternatives being considered.
- The Wisconsin Environmental Policy Act public hearing process, as applicable, on projects which include preparation of an environmental document. The final environmental document prepared following this public hearing will be the decision document for the proposed improvements. Copies of the environmental document are available for review at this public hearing.
- Project activities that require authorization from the U.S. Army Corps of Engineers under the Clean Water Act for placing fill into waters of the United States including wetlands.

Environmental Document Process

The environmental documentation process includes development of a project purpose and need, range of alternatives, evaluation and screening of alternatives and selection of a preferred alternative. Numerous factors are considered throughout the environmental document development process including safety, mobility, compatibility with state/regional/local plans, engineering design standards, impacts to the socio-economic, natural and physical environment, cost, and input from the public and state/federal review agencies.

The County KR – Phase 2 project is currently at the Environmental Assessment stage. The Environmental Assessment documents the project purpose and need for the proposed improvements, alternatives considered, environmental impacts of the alternatives retained for detailed study, and public involvement and agency coordination during the development of the purpose and need and refinement of alternatives. The final environmental document will select the preferred alternative and summarize the results of public testimony provided during the public hearing and document availability period along with agency comments on the Environmental Assessment.

Information for the Public Hearing Record

In addition to the testimony provided at this public hearing, all exhibits, handouts, audio/visual presentations and displays available for viewing at the public hearing will be included in the official public hearing record. Page 15 of this handout contains a complete listing of these materials. Other materials, along with other written testimony received after the public hearing, will be added to the official public hearing record provided they are postmarked or received no later than March 7, 2019.

INSTRUCTIONS FOR PROVIDING TESTIMONY

- **Private Verbal Testimony**
 - Individually with court reporter
 - Look for sign in the lobby hallway
 - Available from 4 to 7 p.m.

Options and Instructions for Providing Testimony

There are several options for providing testimony as described below. Your testimony will be reviewed and considered by WisDOT as part of the process for selecting the preferred alternative. **Testimony should be limited to tonight's public hearing aspects (see Page 6), and statements or opinions about the project.** Provide comments on the alternative(s) you support or oppose and your reasons. Questions related to the project can be directed to project staff during the informal discussions but will not be recorded by the court reporter or included in the public hearing record.

Private Verbal Testimony

This option may be preferred if you wish to make your statement privately to the court reporter rather than in front of an audience. This option is available in the Lobby Hallway Conference Room during the entire public hearing from 4 to 7 p.m., although you are also encouraged to attend the project presentation starting at 4:30 p.m. in the Auditorium. Follow the signs or ask for directions to the location for providing private verbal testimony. Wait for an opening, provide the court reporter with your completed "Registration Slip for Verbal Testimony" included in this handout packet and at the sign in table, state your name, address, and if applicable, the group, organization or business you are representing. Then give the court reporter your testimony.

Public Verbal Testimony

Following the project presentation at 4:30 p.m. in the Auditorium, public verbal testimony will be accepted. Complete a "Registration Slip for Verbal Testimony" included in this handout packet. Give it to designated project staff any time before, during or immediately following the project presentation. Your name will be called in the order the registration slips are received. When you are called to the microphone to provide testimony, please state your name, address, and if applicable, the group, organization or business you are representing. Please limit your testimony to approximately 3 minutes to allow time for others to provide their testimony in public. You can testify again as part of the public verbal testimony after others wishing to testify have done so. Public verbal testimony will continue until everyone interested in providing testimony has had the opportunity to do so or until the public hearing ends at 7 p.m., whichever comes first.

Written Testimony

You may provide written testimony in addition to, or in place of, verbal testimony. Complete the "Written Testimony Form" included in this handout packet. You may also use your own stationary. Include your name, address, and if applicable, the group, organization or business you are representing. If you prepared written testimony prior to the public hearing, you may submit that also. There are two options for submitting your written testimony as described below.

Submit Tonight: Complete the Written Testimony Form and place the form along with any other supporting documentation in the box located on the comment table in the Lobby Hallway.

OR,

Mail In: You may prefer this option if you would like additional time to organize your thoughts/testimony. Pre-addressed envelopes are available at the registration table. You may also send written testimony via email. See "WisDOT Contact Information" on Page 16 of this handout. Mailed or e-mailed testimony must be postmarked or received no later than March 7, 2019 to be included in the official public hearing record.

Page 4

INSTRUCTIONS FOR PROVIDING TESTIMONY

■ Public Verbal Testimony

- Complete registration slip and provide it to staff
- State your name, address and who you represent (if applicable)
- Provide your comments
- Limit comments to 3 minutes

Registration Slip for

County KR – Phase 2 (County H to
Public Hearing – Environmental Assessment)
Somers Village Hall
February 28, 2019

This registration slip may be used for public presentation at 4:30 p.m. in the Auditorium. Complete a "Registration Slip for Verbal Testimony" included in this packet and submit it to a project team member. Your name will be called in the order the registration slips are received. When you are called to the microphone to provide testimony, please state your name, address, and if applicable, the group, organization or business you are representing. Please speak slowly and clearly. Testimony to comments and/or questions will be held. To allow everyone to be heard.

The same process applies for providing testimony directly to the court reporter who is being held.

If you do not wish to speak but wish to provide alternatives being considered at the public hearing, you may submit that information to the court reporter.

Name: _____

Address: _____

If applicable - group, organization or business: _____

☐ **Wishing to speak**

☐ **Not wishing to speak, but wishing to provide testimony at public hearing:**

☐ Support, describe: _____

☐ Do Not Support, describe: _____

Options and Instructions for Providing Testimony

There are several options for providing testimony as described below. Your testimony will be reviewed and considered by WisDOT as part of the process for selecting the preferred alternative. **Testimony should be limited to tonight's public hearing aspects (see Page 6), and statements or opinions about the project.** Provide comments on the alternative(s) you support or oppose and your reasons. Questions related to the project can be directed to project staff during the informal discussions but will not be recorded by the court reporter or included in the public hearing record.

Private Verbal Testimony

This option may be preferred if you wish to make your statement privately to the court reporter rather than in front of an audience. This option is available in the Lobby Hallway Conference Room during the entire public hearing from 4 to 7 p.m., although you are also encouraged to attend the project presentation starting at 4:30 p.m. in the Auditorium. Follow the signs or ask for directions to the location for providing private verbal testimony. Wait for an opening, provide the court reporter with your completed "Registration Slip for Verbal Testimony" included in this packet and at the sign in table, state your name, address, and if applicable, the group, organization or business you are representing. **Then give the court reporter your testimony.**

Public Verbal Testimony

Following the project presentation at 4:30 p.m. in the Auditorium, public verbal testimony will be accepted. Complete a "Registration Slip for Verbal Testimony" included in this packet. Give it to designated project staff any time before, during or immediately following the project presentation. Your name will be called in the order the registration slips are received. When you are called to the microphone to provide testimony, please state your name, address, and if applicable, the group, organization or business you are representing. Please limit your testimony to approximately 3 minutes to allow time for others to provide their testimony in public. You can testify again as part of the public verbal testimony after others wishing to testify have done so. Public verbal testimony will continue until everyone interested in providing testimony has had the opportunity to do so or until the public hearing ends at 7 p.m., whichever comes first.

Written Testimony

You may provide written testimony in addition to, or in place of, verbal testimony. Complete the "Written Testimony Form" included in this packet. You may also use your own stationary. Include your name, address, and if applicable, the group, organization or business you are representing. If you prepared written testimony prior to the public hearing, you may submit that also. There are two options for submitting your written testimony as described below.

Submit Tonight: Complete the Written Testimony Form and place the form along with any other supporting documentation in the box located on the comment table in the Lobby Hallway.

OR,

Mail In: You may prefer this option if you would like additional time to organize your thoughts/testimony. Pre-addressed envelopes are available at the registration table. You may also send written testimony via email. See "WisDOT Contact Information" on Page 16 of this packet. Mailed or e-mailed testimony must be postmarked or received no later than March 7, 2019 to be included in the official public hearing record.

Page 4

- **Written Public Testimony**

- ## Written Testimony I

Please place this form in the box

Name (please print): _____

Address: _____

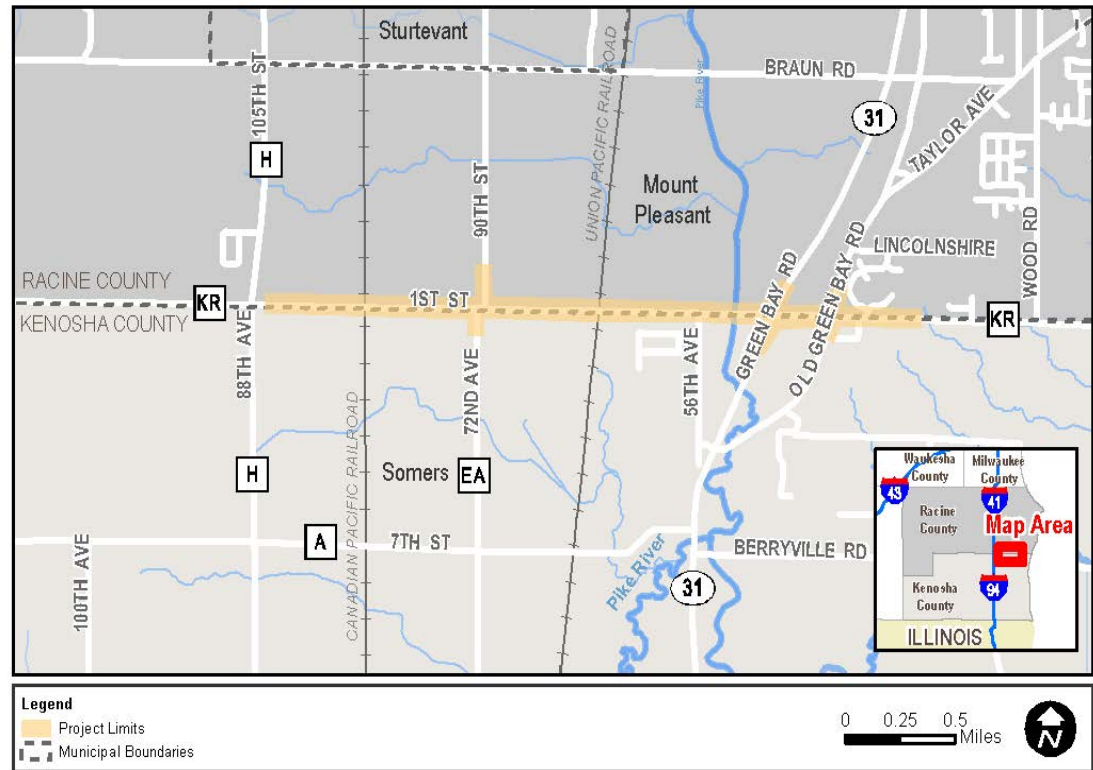
Phone Number (optional): _____

Testimony (use additional page)

Mail In: You may prefer this option if you would like additional time to organize your thoughts/testimony. Pre-addressed envelopes are available at the registration table. You may also send written testimony via email. See "WisDOT Contact Information" on Page 16 of this handout. Mailed or e-mailed testimony must be postmarked or received no later than March 7, 2019 to be included in the official public hearing record.

PROJECT OVERVIEW

- **Project Area**
 - County KR from County H to Old Green Bay Road
- **Jurisdictional Transfer Agreement (April 2018)**
 - WisDOT, Racine County and Kenosha County
- **Current Study Phase**
 - Prepare preliminary plans
 - Complete environmental assessment
 - Select preferred alternative



PURPOSE AND NEED

- **PURPOSE:** The purpose of the project is to upgrade the County KR infrastructure to safely and efficiently handle projected traffic volumes anticipated from local economic development activities occurring in the project area, and to provide a safe and well-connected transportation corridor that serves the communities in Racine County and Kenosha County.
- **NEED**
 - **Travel Demand:** Traffic volumes projected to more than double by 2042.
 - **System Linkage and Route Importance:** An important east-west arterial that serves the local population and employment bases.
 - **Roadway Deficiencies:** Road deficiencies when combined with future travel demand impact vehicular, bike and pedestrian safety.
 - **Safety:** Crash rate exceeds statewide threshold.

ALTERNATIVES CONSIDERED

■ **No Build Alternative** (Baseline)

- Maintain County KR as a two-lane undivided roadway
- Serves as the baseline to compare other alternatives

■ **Build Alternative – Bypass** (Dismissed)

- Construct new roadway alignment north of County KR that connects 90th Street with WIS 11 near downtown Racine
- Dismissed because it does not meet the project purpose of providing a well-connected transportation corridor that serves the communities of Racine County **and** Kenosha County as well as additional environmental impacts and cost.

■ **Build Alternative – Reconstruction** (Preferred)

- Reconstruct and widen County KR as a four-lane divided roadway
- Advanced for detailed study and environmental review

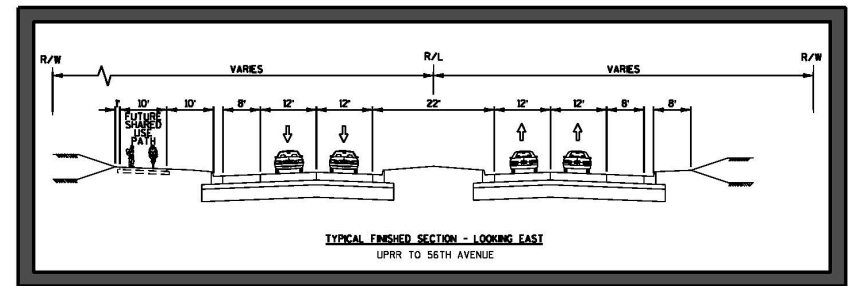
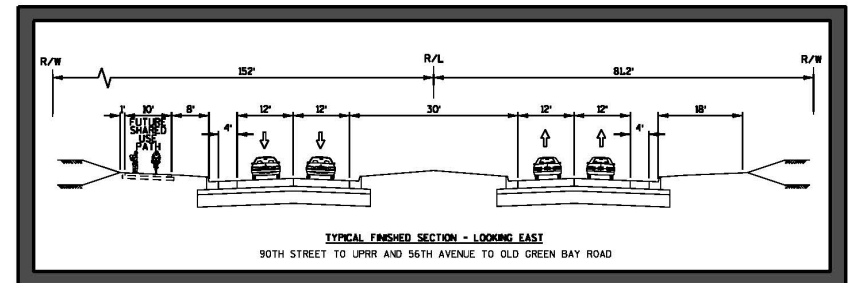
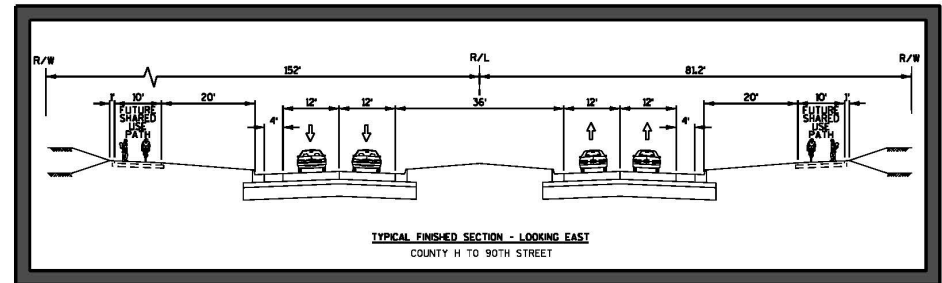
DESCRIPTION OF PREFERRED ALTERNATIVE

■ Build Alternative – Reconstruction

- 4-lane divided roadway with medians
- Intersection improvements at WIS 31 and Old Green Bay Road
- Realignment of 90th Street with County EA/72nd Avenue
- Grade separations at UPRR and CPRR
- New Pike River bridges
- Shared-use paths for bikes and pedestrians
- Stormwater and drainage facilities

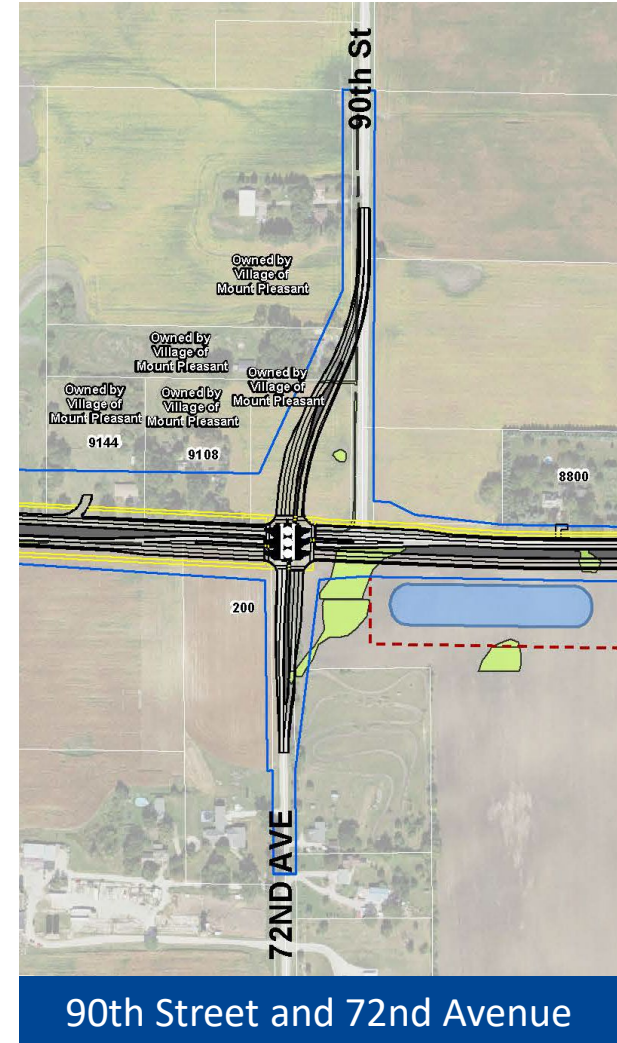
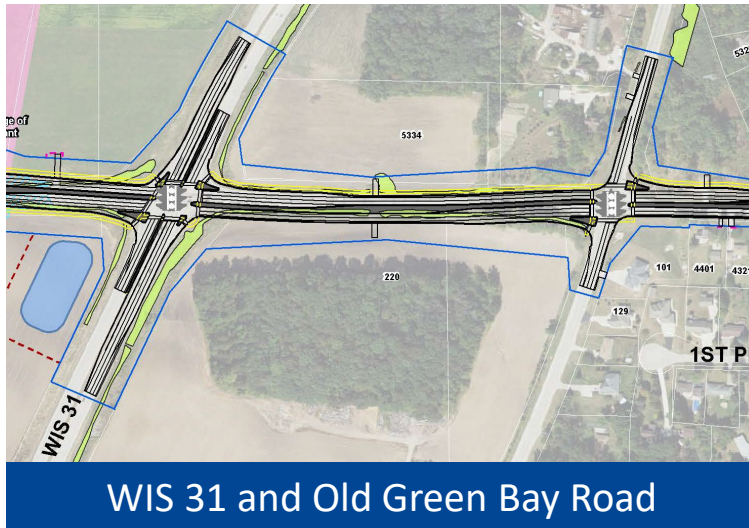
ROADWAY AND MEDIANS

- Two 12-foot lanes in each direction for length of project
- County H to 90th Street
 - 36-foot median, 4-foot shoulders
- 90th Street to UPRR
 - 30-foot median, 4-foot shoulders
- UPRR to 56th Avenue
 - 22-foot median, 8-foot shoulders
 - *WisDOT is considering a two way left turn lane for cross access*
- 56th Avenue to Old Green Bay Road
 - 30-foot median, 4-foot shoulders
- 43rd Avenue to east terminus
 - Painted median provides cross access



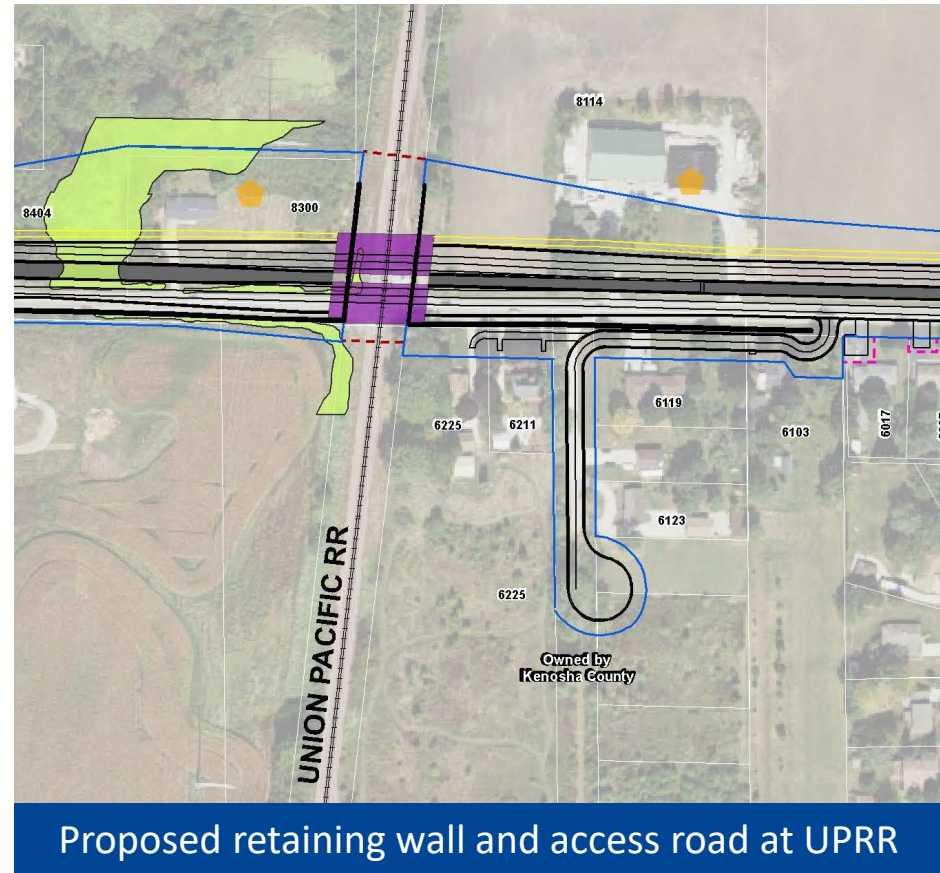
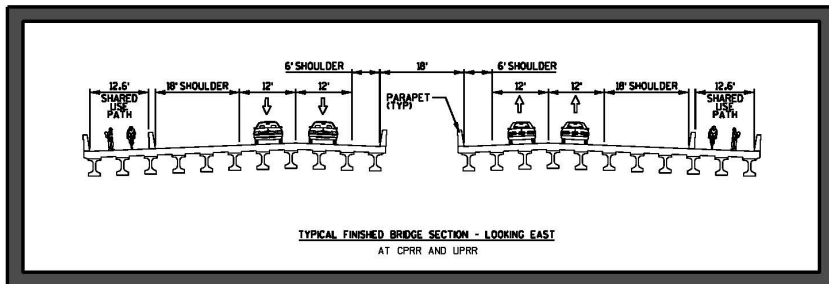
INTERSECTION IMPROVEMENTS

- Reconstruct County KR intersections to maintain traffic operations at WIS 31 and Old Green Bay Road
- Realign 90th Street on the north with County EA (72nd Avenue) on the south



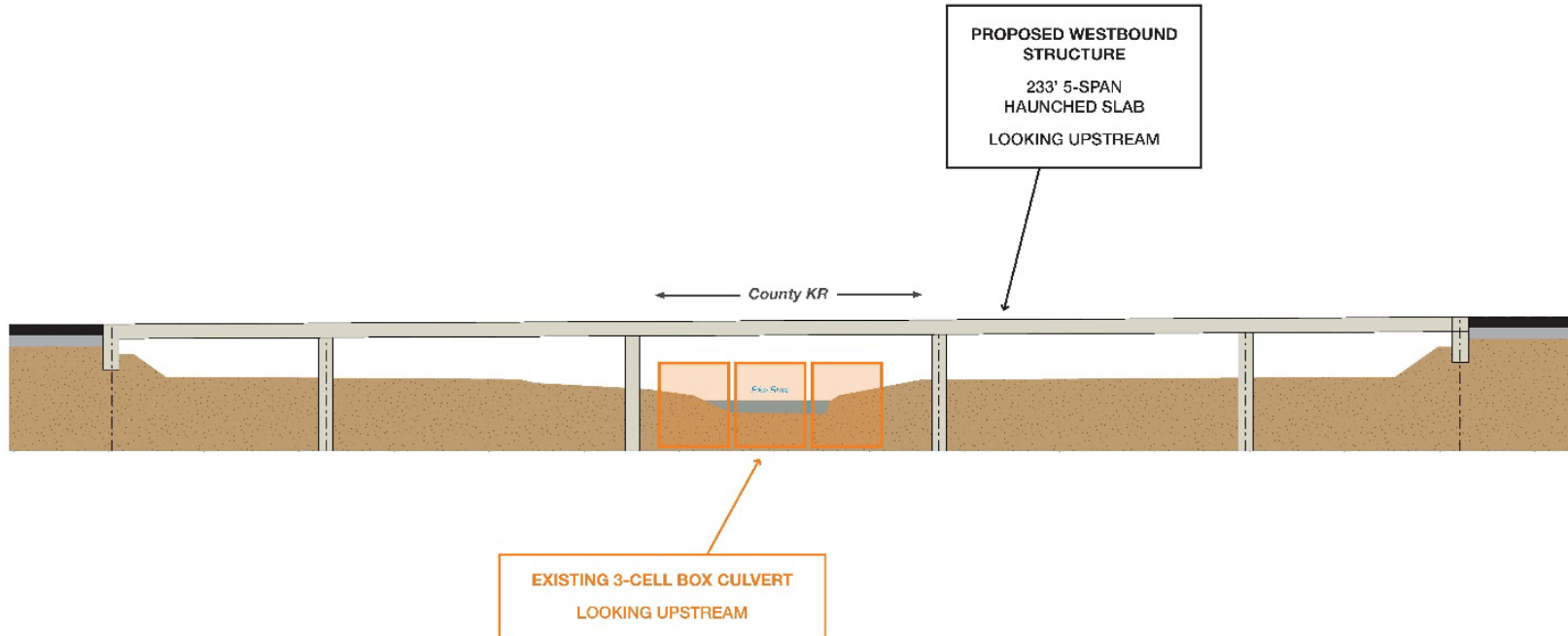
RAILROAD GRADE SEPARATIONS

- Replace existing UPRR and CP RR at-grade crossings with grade separations
- UPRR grade separation includes retaining wall and access road on south side



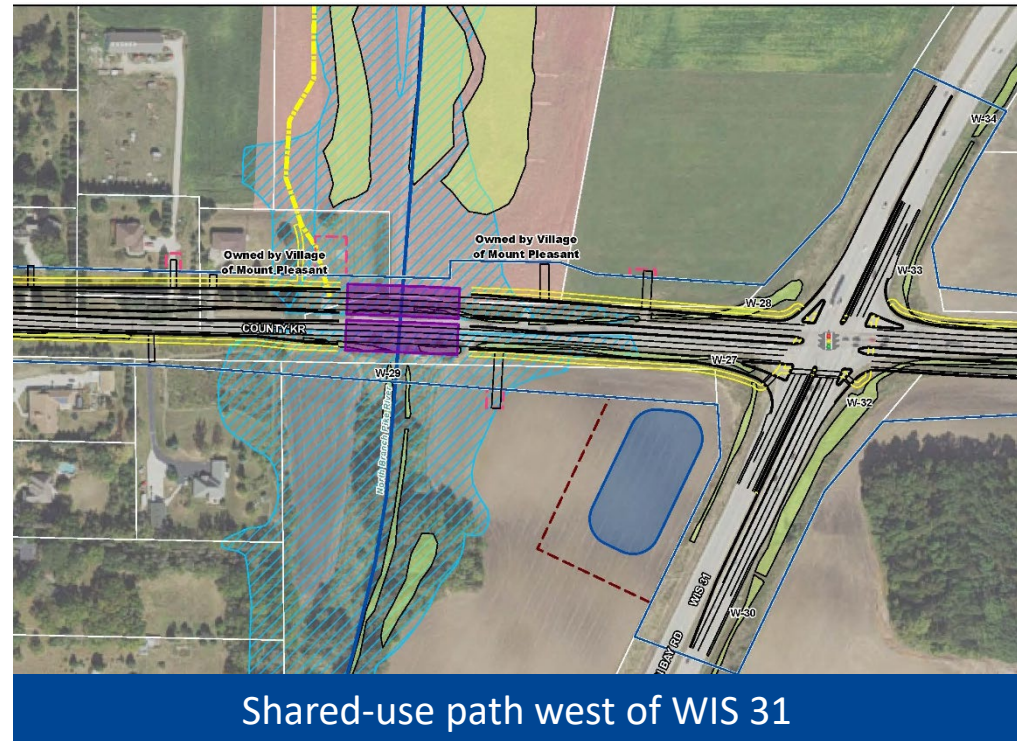
PIKE RIVER BRIDGES

- Replace existing box culvert with two 233-foot concrete slab span bridges



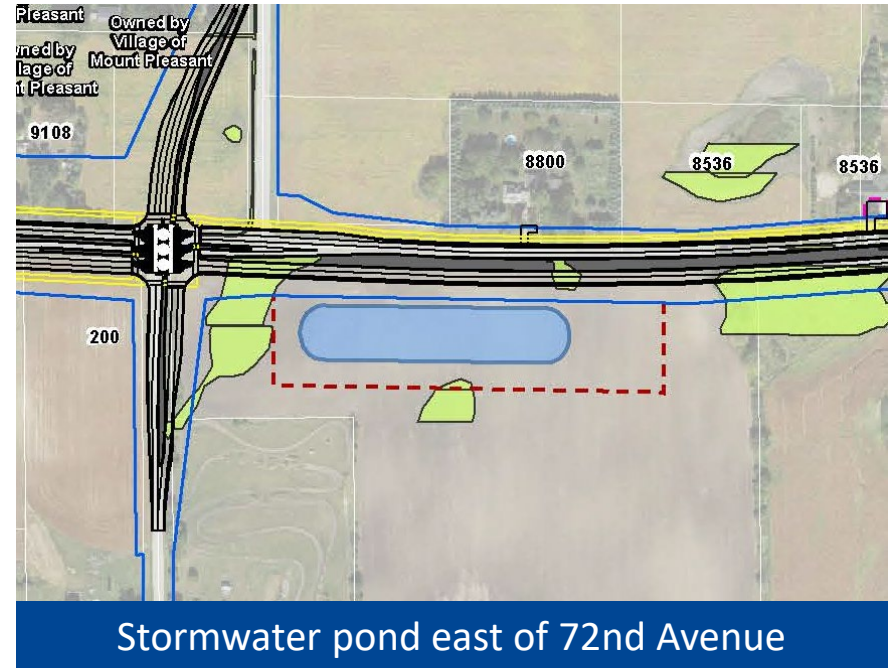
SHARED-USE PATHS

- 10-foot shared-use paths
 - Both sides of County KR from County H to 90th Street
 - North side of County KR from 90th Street to Vicksburg Drive
- Connects with Pike River Pathway in Mount Pleasant
- Existing path in Somers
 - Replace in generally the same configuration
 - Remove existing path bridge and reroute bikes and pedestrians onto new Pike River bridge



STORMWATER AND DRAINAGE FACILITIES

- Replace existing ditches with curb and gutter drainage system
- Convey stormwater to four detention ponds to improve water quality and reduce peak flow rates
- Pond locations
 - North of County KR
 - Between County H and CPRR
 - West of Pike River
 - South of County KR
 - East of 72nd Avenue
 - Between Pike River and WIS 31



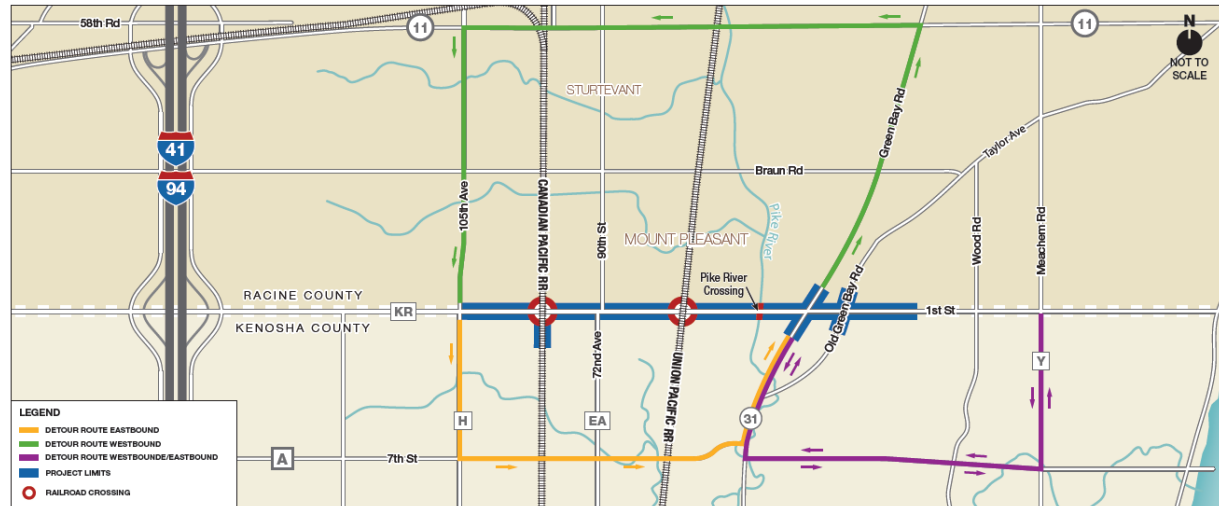
CONSTRUCTION STAGING AND DETOUR OPTIONS

■ During construction

- Local access will be maintained
- Thru traffic will be detoured

■ Staging options

- Option 1: Construct County KR over 30 months in four stages
- Option 2: Construct County KR over 18-24 months in three stages

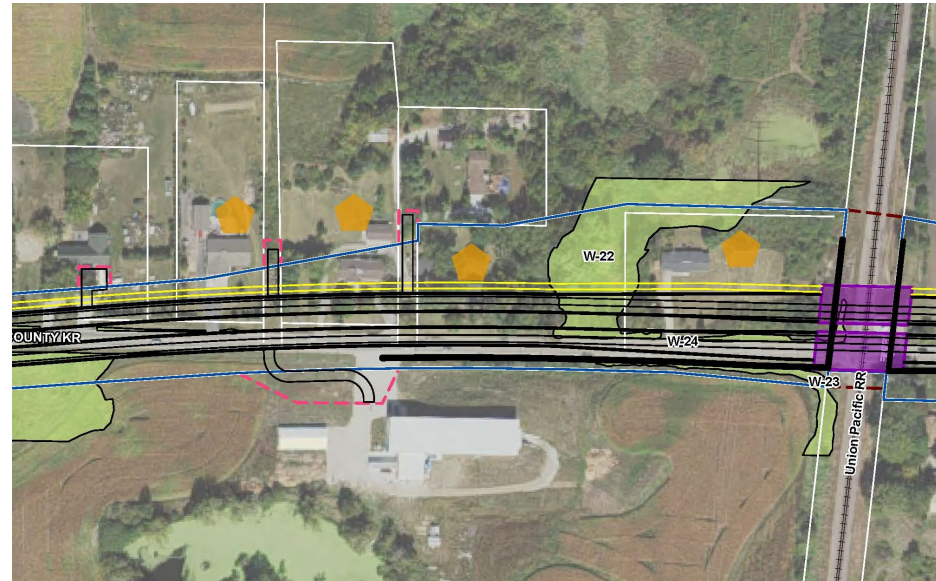


ENVIRONMENTAL EVALUATION SUMMARY

Evaluation Factors	No Build Alternative	Build Alternative – Reconstruction
Traffic Operations in Design Year 2042		
County KR - County H to 90th Street (LOS)	E	C
County KR - 90th Street to WIS 31 (LOS)	E	B
County KR - WIS 31 to County M) (LOS)	E	B
Land Conversion and Real Estate Requirements		
Acres converted to new right of way	0	68.9 acres (includes 53.4 acres of farmland)
Housing units required	0	5
Environmental Resource Impacts		
Residences impacted by traffic noise	0	23
Floodplain	0	2.7 acres
Environmental corridors	0	3.49 acres
Pike River restoration area	0	0.38 acres
Future Biex Ramcke Homestead Park	0	2.08 acres
Threatened and endangered species	No	No (mitigation for Rusty Patched Bumble Bee)
Aesthetic/visual changes	No	Yes

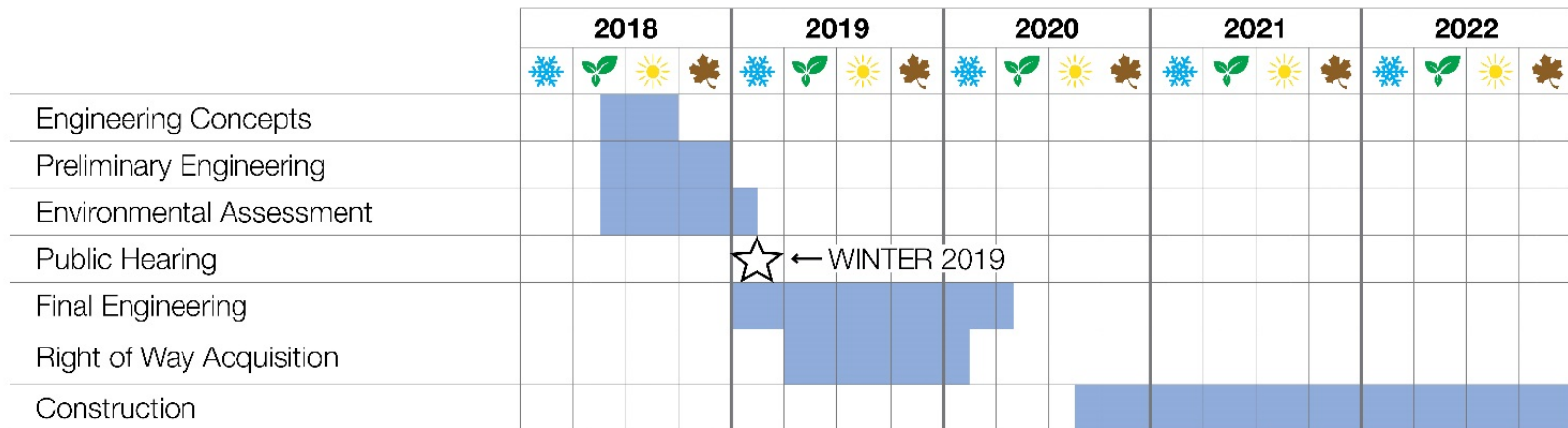
PROPERTY ACQUISITION AND RELOCATION PROCEDURES

- Racine County and Kenosha County will complete all real estate acquisitions and relocations required for the project.
- Anyone affected by the proposed improvement may obtain acquisition and relocation assistance information from the applicable county representatives.
- Refer to public hearing packet for county contact information.



PROJECT SCHEDULE AND NEXT STEPS

- **EA public comment period** ends March 7, 2019.
- Review results of public hearing and finalize **decision on preferred alternative** in spring 2019.
- **Final engineering** and **right of way acquisition** may begin spring 2019 and continue to early spring 2020.
- **Construction** may begin summer 2020 and continue through 2021 and 2022.



EXHIBITS PRESENTED

- Build Alternative – Reconstruction Aerial Display (long plot)
- Proposed Utilities (long plot)
- Project Background with Location Map
- Project Purpose and Need
- Project Description – Roadway, Intersections and Railroad
- Project Description – Pedestrians, Stormwater, Pike River
- Roadway Typical Sections
- Pike River Bridge Elevation View
- Environmental Impact Summary
- UPRR to 56th Avenue – TWLTL Median Option
- Regional Transportation Compatibility
- Proposed Detour Route
- Local Access During Construction
- Local Traffic Construction Access
- County KR Retaining Wall - looking NE
- County KR Retaining Wall - looking North
- Project Schedule

THANK YOU FOR LISTENING

Project Questions

- Please speak with staff in the Lobby Hallway to obtain additional project information and have your questions answered.
- Discussions with staff in the Lobby Hallway are not part of the official record.

Contact Information

Steve Hoff, P.E., Project Manager
WisDOT Southeast Region
141 NW Barstow Street
Waukesha, WI 53187-0798

Phone: (262) 548-6718

Email: Steve.Hoff@dot.wi.gov

Project Website

<https://projects.511wi.gov/fdr/>