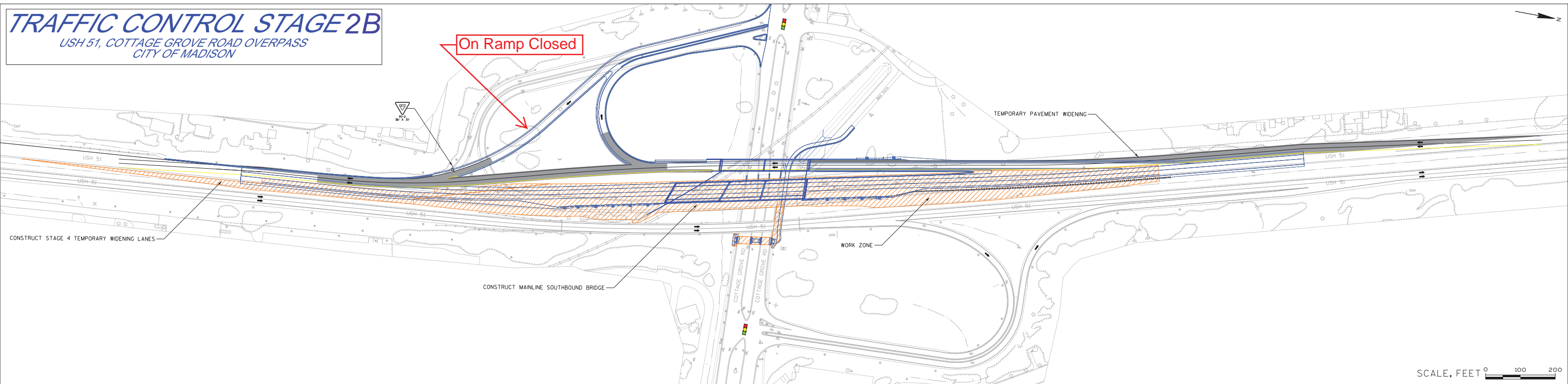


ATTACHMENT B - US 51 TRAFFIC CONTROL STAGING EXHIBITS

TENTATIVELY
LATE MAY - EARLY JULY
2016



- USH 51 on-ramp at Cottage Grove Road will be closed.

NOTE: This map only depicts general staging for US 51, there will be work on Cottage Grove Road simultaneously which will affect traffic. There will be one lane of traffic in each direction, westbound and eastbound, at all times. These lanes will be switched to different areas of the roadway utilizing crossovers to accommodate construction activities.