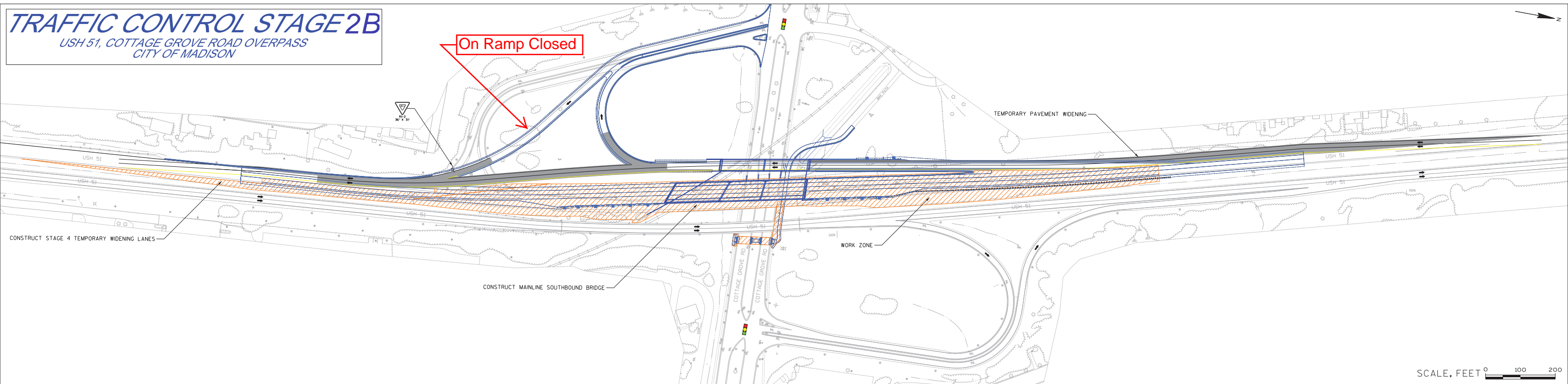


ATTACHMENT A - PROJECT OVERVIEW



ATTACHMENT B - US 51 TRAFFIC CONTROL STAGING EXHIBITS

**TENTATIVELY
LATE MAY - EARLY JULY
2016**

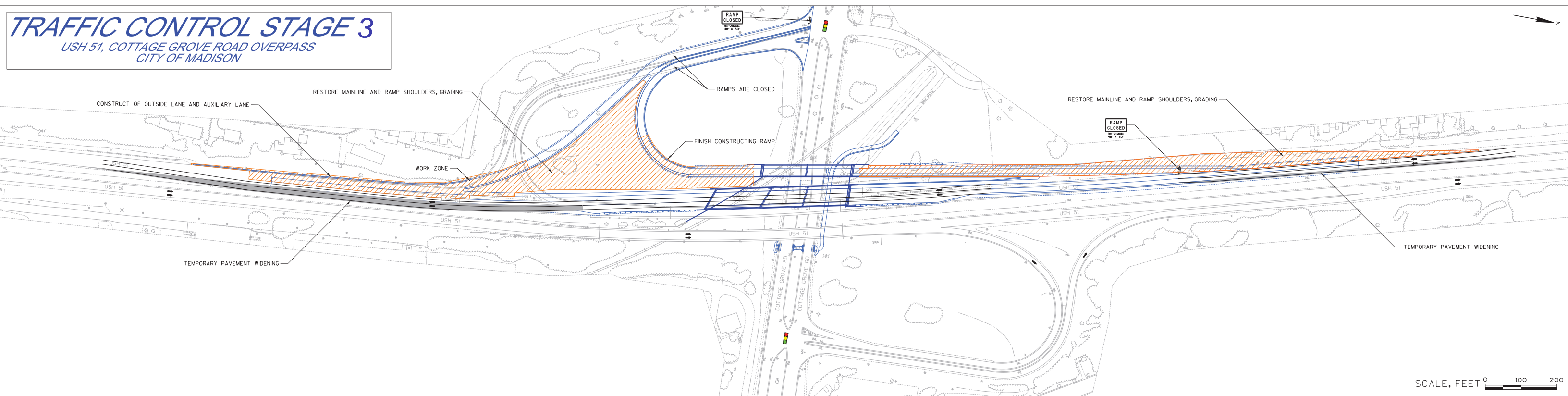


- USH 51 on-ramp at Cottage Grove Road will be closed.

NOTE: This map only depicts general staging for US 51, there will be work on Cottage Grove Road simultaneously which will affect traffic. There will be one lane of traffic in each direction, westbound and eastbound, at all times. These lanes will be switched to different areas of the roadway utilizing crossovers to accommodate construction activities.

ATTACHMENT B - US 51 TRAFFIC CONTROL STAGING EXHIBITS

**TENTATIVELY
EARLY JULY - OCTOBER
2016**



- The main item of work is removing temporary connections and constructing permanent connections.
- Southbound US 51 traffic (2 lanes) will be shifted to the new mainline bridge over Cottage Grove Road.
- Southbound US 51 entrance and exit ramps at Cottage Grove Road will be closed for 2 weeks (tentatively early July) to make final / permanent connections.
- Southbound US 51 single lane closure to remove temporary pavement in medians after ramps are re-opened.